
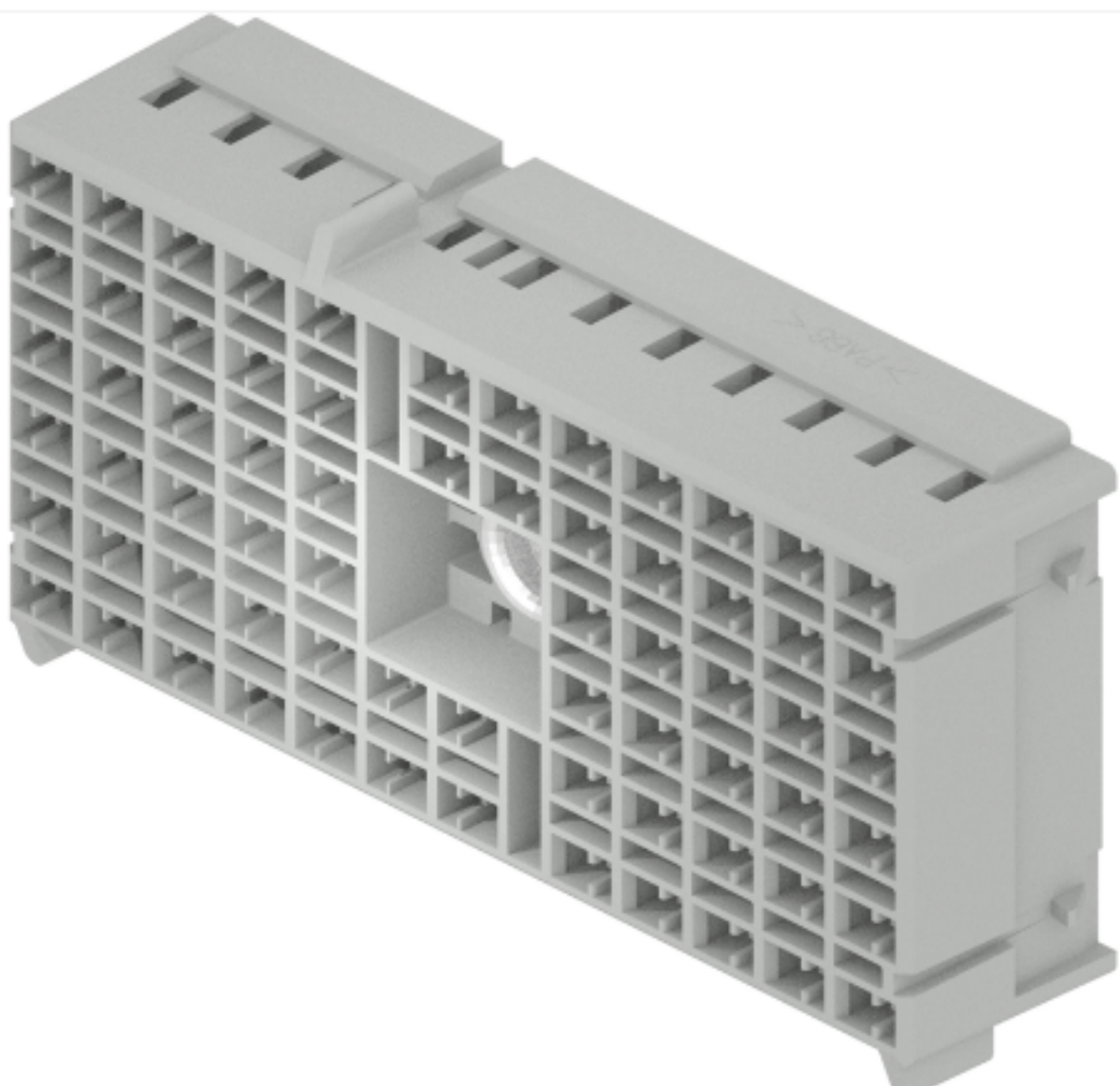


SEARCH KEYWORD, PART NUMBER 



Part Number: 15319897

Product Name: [Metri-Pack 280 Series](#)

68 Way F M/P 2.8 Unsealed Connector

 [Share](#)  [Print](#) [Contact Us About This Item](#)

This part is not currently offered in our sample program.

**SEND REQUEST** 

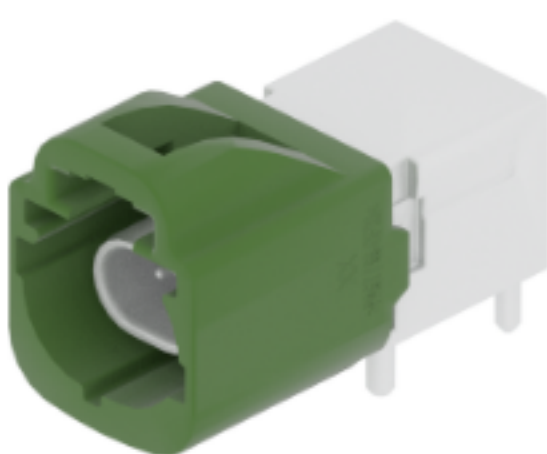
Request this part be added to the sample program.

**ATTRIBUTES** DOCUMENTS ECAD COMPATIBLE PARTS

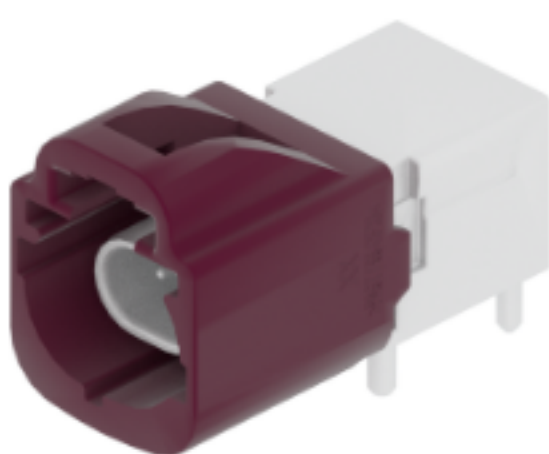
**Attributes**

Product Family Metri-Pack	Height (mm) 103.3
Product Series 280 Series	Color GRAY-LIGHT
Max. operating temperature +125°C	Primary Locking Mechanism CAVITY LOCK
Min. operating temperature -40°C	Weight (g) 58.3909
No. of Ways 68	Terminal 1 Size 2.8
Gender Female	Sealing Unsealed
Length (mm) 23.7	Primary Material PA66
Width (mm) 54.66	

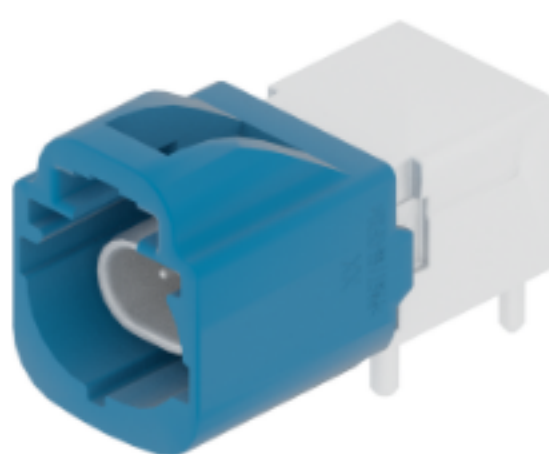
**Other Products**



**35829171**  
2 Way Male 0.5 Unsealed Green



**35829170**  
2 Way Male 0.5 Unsealed Violet

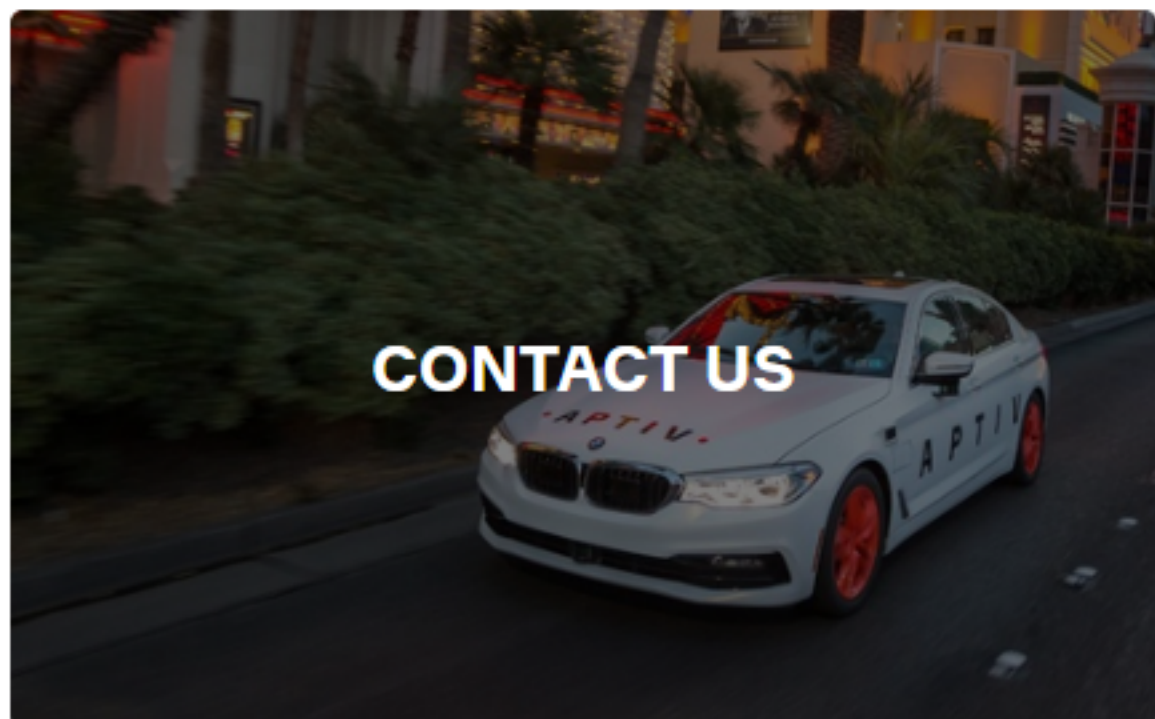


**35829169**  
2 Way Male 0.5 Unsealed Blue

**RESOURCE-CENTER-ITEM**  
COV CONN CLIP CDT BLACK



**Next Steps**



Keep pace with where mobility is going.

See what's next and get the latest updates.

**SIGN UP TO GET UPDATES** 

Don't worry. We won't flood your inbox or share your email.

**INSIGHTS**

EXPLORE ALL ARTICLES  
CASE STUDIES  
MOBILITY INSIDER  
RESEARCH PUBLICATIONS  
WHITE PAPERS

**SOLUTIONS**

Advanced Safety  
Connected Services  
Connection Systems  
Connectivity and Security  
Electrical Distribution Systems  
Middleware & DevOps  
Smart Vehicle Architecture  
User Experience  
Vehicle Electrification Systems  
HellermannTyton  
Intercable Automotive Solutions  
Motional  
Winchester Interconnect  
Wind River

**CATALOG**

**ABOUT**

Our Mission  
Our Businesses  
Our Locations  
Our Foundation  
Sustainability  
Suppliers

**PRIVACY**

Terms of Use  
Cookie Policy

**LEGAL & COMPLIANCE**

**CAREERS**

**INVESTORS**  
**NEWSROOM**  
**CONTACT**