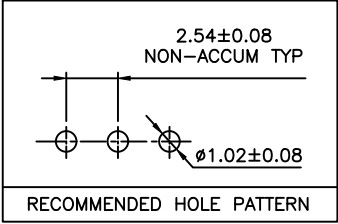
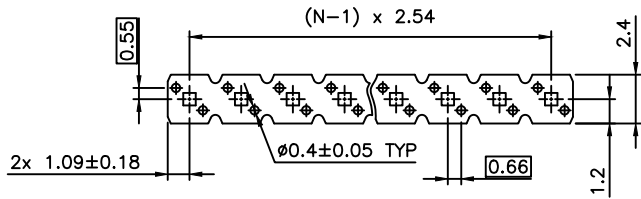


WE RECOMMEND THESE CONNECTORS FOR OPTIMAL SERVICE LEVEL

**Preferred Part**

- SHORT LEAD-TIMES
- LOW MOQs
- QUICK SAMPLING
- AVAILABLE AT DISTRIBUTION

- Preferred Part**
- 77311-101-02LF
  - 77311-101-03LF
  - 77311-101-04LF
  - 77311-101-05LF
  - 77311-101-06LF
  - 77311-101-07LF
  - 77311-101-08LF
  - 77311-101-09LF
  - 77311-101-10LF



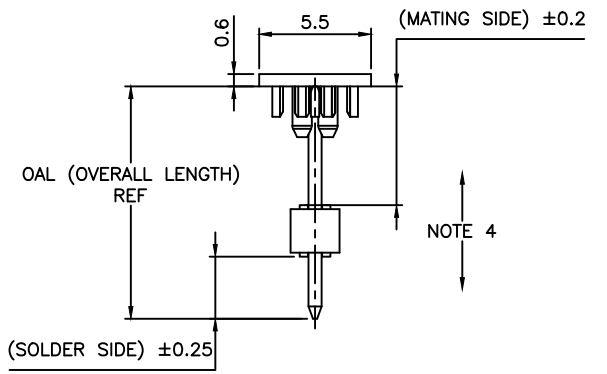
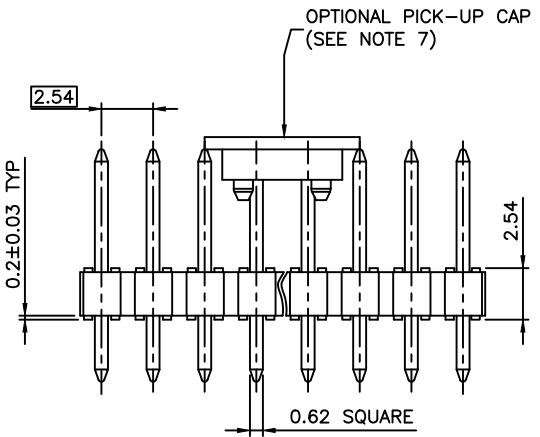
PLATING \_\_\_\_\_  
 1 = 0.76µm GOLD/GXT ON CONTACT AREA  
 2µm TIN MIN ON TAIL  
 1.27µm Ni MIN UNDERLAYER

PIN STYLE \_\_\_\_\_

RoHS COMPATIBLE SEE NOTE 6

TOTAL NB OF POSITIONS \_\_\_\_\_

PACKAGING : - = POLYBAG



- NOTES:
- HOUSING MAT'L : HIGH TEMPERATURE THERMOPLASTIC. UL94V-0 COLOR: BLACK
  - PIN MATERIAL : PHOSPHOR BRONZE
  - BERGSTIK PRODUCT PACKAGED IN POLYBAGS. BERGSTRIIP PRODUCT PACKAGED PER REELS.
  - 9N MIN RETENTION IN EITHER DIRECTION
  - TO DETERMINE DIMENSIONS :  
 N = NUMBER OF POSITIONS PER ROW  
 EXAMPLE : 8 POS N x 2.54 = 20.32mm
  - RoHS COMPATIBLE PRODUCT SPECIFICATIONS
    - a - **PLATING:**
      - "LF" MEANS THE PRODUCT IS LEAD-FREE, 2µm MINIMUM MATTE TIN OVER 1.27µm MINIMUM NICKEL UNDERPLATE.
    - b - **MANUFACTURING PROCESS COMPATIBILITY**
      - THE HOUSING WILL WITHSTAND EXPOSURE TO 260°C ±5°C SOLDER BATH TEMPERATURE FOR 5 SECONDS IN A WAVE SOLDER APPLICATION WITH A 1.6mm MIN THICK CIRCUIT BOARD.
      - REFLOW COMPATIBLE
    - c - **LABELING:**
      - MEETS PACKAGING SPECS AS PER GS-14-920
    - d - **LEGAL STATEMENT:** SEE GS-47-0004
  - THIS PART SERIES IS NOT INITIALLY INTENDED FOR AUTOMOTIVE APPLICATIONS. ADDITIONAL FEES ARE CHARGEABLE FOR ANY ADDITIONAL QUALIFICATION AND TEST REPORTS PERFORMED OUTSIDE THE SCOPE OF THE STANDARD PRODUCT SPECIFICATIONS.
  - UNLESS OTHERWISE APPROVED BY AMPHENOL, ALL PARTS AND COMPONENTS ARE DESIGNED & BUILT ACCORDING TO AMPHENOL'S SPECIFICATIONS WHICH ARE SUBJECT TO CHANGE WITHOUT NOTICE.

mat'l. code		surface		tolerance		projection		product family	
SEE NOTES		ISO 1302 ✓		ISO 406 ISO 1101		mm		BERGSTIK	
ltr	ecn no	dr	date	tolerances unless otherwise specified		mm		title	
DE	F-55486	DDE	25.04.16	angles	linear	.x ±0.3	← mm →	UNSHR.HEADER	
DF	F-56758	DDE	25.08.04			.xx ±0.15		STR SR TMT	
DG	F-58214	DDE	25.11.19			.xxx ±0.05		scale 5:1	
DH	F-285470	DDE	26.04.07	dr	D.LEGRAND	01.01.24	dwg no		
				enrg	J.COMPAGNON	01.01.24	sheet 1 of 4		
DC	F-52795	DDE	24.09.04	chr	J.COMPAGNON	01.01.24	size		
DD	F-54440	DDE	25.01.27	appd	JF.NOTTEAU	01.01.24	A3		
sheet	revision	DH	CE	A	V	type CUSTOMER Drawing			
index	sheet	1	2	3	4				

Copyright FCI  
FCIconnect.com

# EXTENDED RANGE

PRODUCT NUMBER  
77311-YXX-XXLF

PLATING, SEE BELOW  
(AS AVAILABLE)

PIN STYLE, SEE SHEET 4  
(AS AVAILABLE)

RoHS COMPATIBLE  
SEE NOTE 6 ON SHEET 1

TOTAL NB OF POSITIONS 01 TO 36

OPTION LETTER, SEE ON RIGHT  
(MAY BE SUBJECT TO TOOLING FEES)

### OPTIONS :

BLANK = POLYBAG PACKAGING

K = TAPE & REEL PACKAGING, WITHOUT PICK UP CAP, AS AVAILABLE

A = TAPE & REEL PACKAGING, WITH PICK UP CAP. AS AVAILABLE

KC = TAPE & REEL PACKAGING WITHOUT PICK UP CAP AND WITH HIGH RETENTION FEATURES

KV = TAPE & REEL PACKAGING WITHOUT PICK UP CAP FOR CUSTOMER DEDICATED PART ONLY FOR P/N 77311-462KV04LF

AV = TAPE & REEL PACKAGING WITH PICK UP CAP FOR CUSTOMER DEDICATED PART

C = HIGH RETENTION FEATURES, FROM 03 TO 36POS, SEE SHEET 2

V = BLIBOX PACKAGING FOR CUSTOMER DEDICATED PART. ONLY FOR 77311-4BNV01LF

R = RETENTION FEATURES, SEE BELOW

IF RETENTION FEATURE "R" AND TUBE PACKAGING "T" ARE BOTH REQUIRED

OPTIONAL LETTER "R" WILL APPEAR INSTEAD OF THE FIRST DASH

EXAMPLE : 77311R424T03LF

ERP = POLYBAG PACKAGING FOR DEDICATED CUSTOMER, WITH SPECIFIC LABEL

### PLATING :

1 = 0.76µm GOLD/GXT ON CONTACT AREA, 2µm TIN MIN ON TAIL

4 = 2µm TIN MIN FULL PLATED

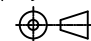
8 = 0.38µm GOLD/GXT ON CONTACT AREA, 2µm TIN MIN ON TAIL

G = 0.76µm FULL GXT

S = 0.38µm FULL GXT

T = 2µm TIN MIN FULL PLATED INCLUDED PIN TIP

- 1.27µm NICKEL MIN UNDERLAYER FOR ALL PLATING VERSIONS

mat'l. code				surface ISO 1302 <input checked="" type="checkbox"/> ISO 406 ISO 1101		tolerance ISO 406 ISO 1101		projection 		product family BERGSTIK	
ltr	ecn no	dr	date	tolerances unless otherwise specified		title		UNSHR.HEADER STR SR TMT			
CC	F-52795	DDE	24.09.04	angles		mm		dwg no			
CD	F-54440	DDE	25.01.27	linear		scale N/A		sheet 2 of 4			
CE	F-58214	DDE	25.11.19	dr		D.LEGRAND 01.01.24		size			
BY	F-39392	DDE	20.12.18	enfr		J.COMPAGNON 01.01.24		77311			
CA	F-39850	DDE	23.01.13	chr		J.COMPAGNON 01.01.24		A3			
CB	F-49467	DDE	23.10.12	appd		JF.NOTTEAU 01.01.24		type CUSTOMER Drawing			
sheet	revision										
index	sheet										

EXTENDED RANGE

PRODUCT NUMBER (BERGSTRIIP PACKAGING)  
77311-YXX-OOLF

PLATING

1= 0.76µm GOLD/GXT ON CONTACT AREA, 2µm TIN MIN ON TAILS

8= 0.38µm GOLD/GXT ON CONTACT AREA, 2µm TIN MIN ON TAILS

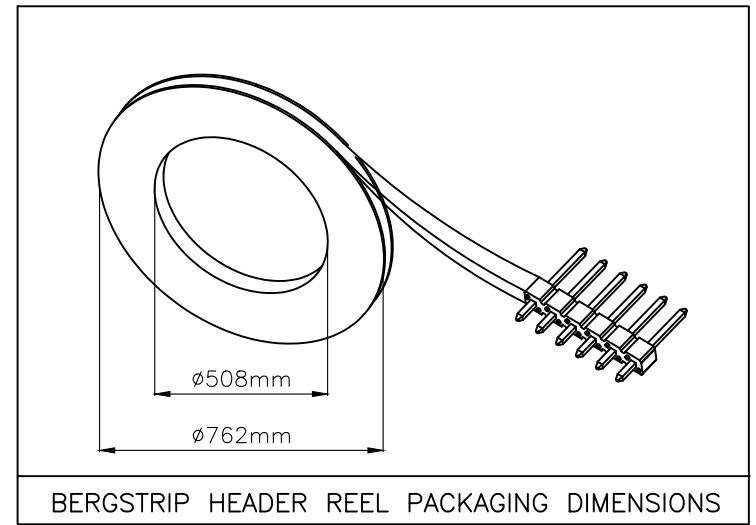
4= 2.0µm TIN MIN FULL PLATED

1.27µm NICKEL MIN UNDERLAYER FOR ALL PLATING VERSIONS

INDICATES THE PRODUCT IS RoHS COMPATIBLE, SEE NOTE 6

POSITIONS PER REEL : 00=36,000 (BERGSTRIIP)

PIN STYLE	MATING	SOLDER	OAL
01	5.84	2.41	10.8
02	5.84	3.42	11.8
18	5.84	3.05	11.43
22	7.75	3.05	13.35
24	6.75	2.9	12.2
27	6.6	2.66	11.8



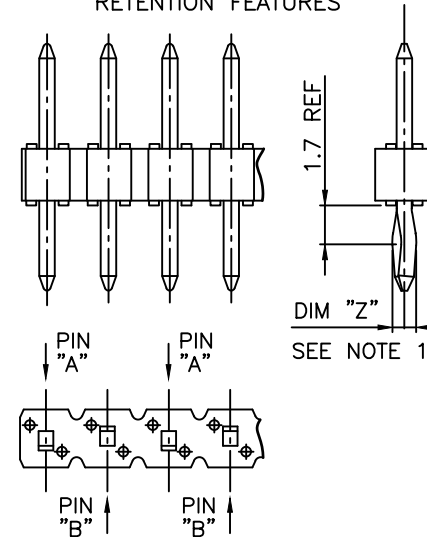
RETENTION FEATURES :

- PART NUMBER 77311-XXXRXXLF: DIM "Z"=(0.99)  
PART NUMBER 77311-XXXCXXLF: DIM "Z"= 1.05MIN -1.15MAX
- PINS "A" AND "B" USED FOR RETENTION.
- DIRECTION OF RETENTION SHOWN BY ARROWS.
- ON 4 TO 36 POSITIONS HEADER; RETENTION IS IN MID POSITION OF HEADER (4 CENTRAL PINS)
- FOR RETENTION OPTION , SOLDER TAIL LENGTH TO BE 2.9 MIN UP TO 3.5 MAX.
- HOUSING MATERIAL FOR P/N 77311-4AJC03LF & 77311-TAJC03LF HIGH TEMPERATURE THERMOPLASTIC UL94V-0 COLOR : NATURAL

PLATING SPECIFICATIONS :

- ONLY FOR PLATING 1XX, 8.0MM GOLD / GXT PLATING AREA FROM PIN TYPE ON MATING SIDE

RETENTION FEATURES



mat'l. code		surface ISO 1302 ✓		tolerance ISO 406 ISO 1101		projection		product family BERGSTIK		
ltr	ecn no	dr	date	tolerances unless otherwise specified		mm		title UNSHR.HEADER STR SR TMT		
A	F-54440	DDE	25.01.27	angles	linear	scale N/A		dwg no 77311 sheet 3 of 4 size A3		
				dr	D.LEGRAND	01.01.24	Amphenol FCI		type CUSTOMER Drawing	
				enrg	J.COMPAGNON	01.01.24				
				chr	J.COMPAGNON	01.01.24				
				appd	JF.NOTTEAU	01.01.24				
sheet index	revision sheet									

