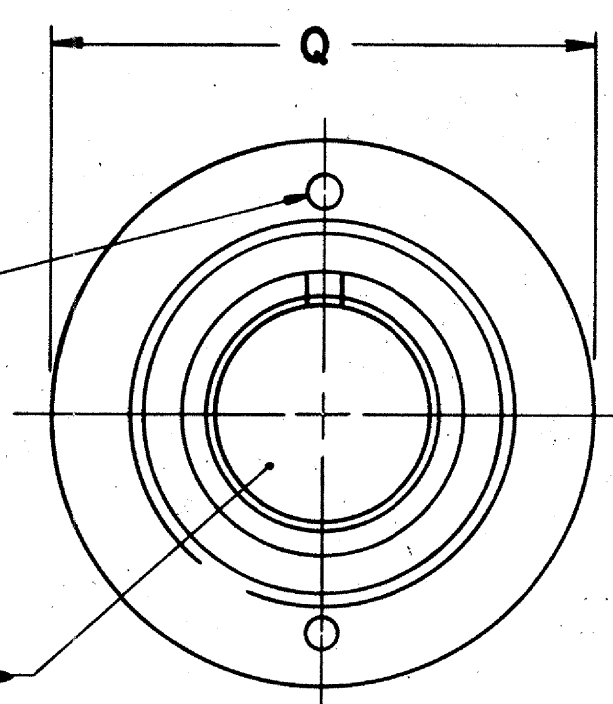
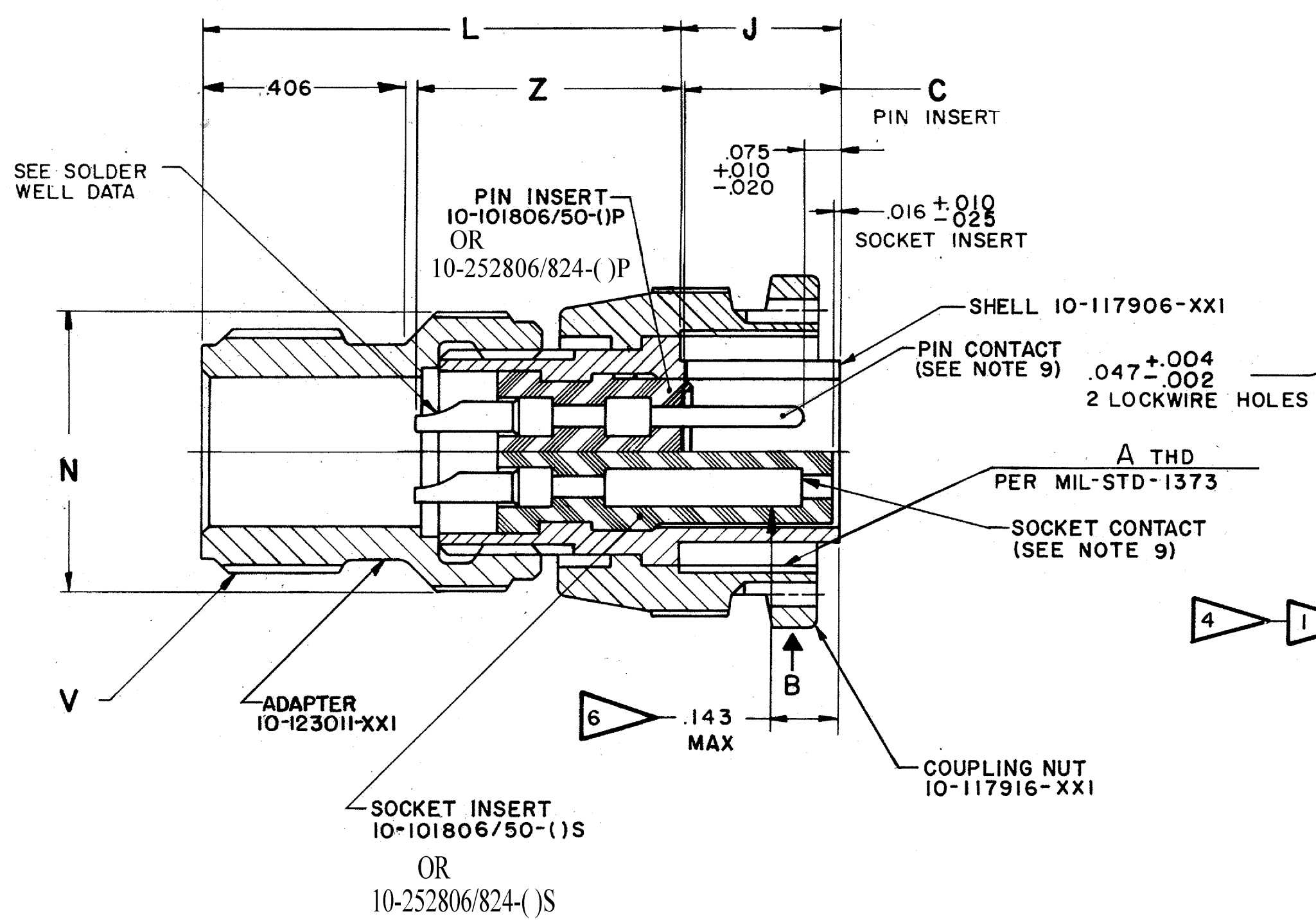
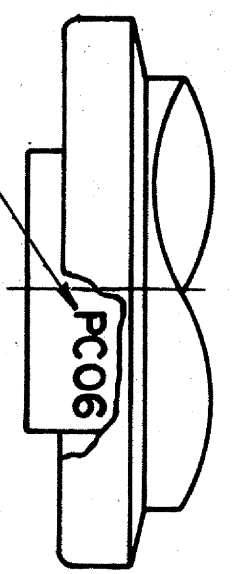


REL NO. 31508-162		REVISIONS		
CHG NO.	SYM	DESCRIPTION	DATE	APPROVED
45525-419	B5	REDRAWN, SAME SIZE; REV DATA	12-28-65	KOVARIK <i>Harris</i>
70525-43	C	(MFG) SEE CHANGE NOTICE	12-5-78	L. Hall <i>L. Hall</i>
72028-5	D	(CL II) ADAPTER WAS 10-117911-XXI, REVISED "L" COL.	130-81	LEWIS <i>Hallcock</i>
A0992	E	(CL II) ADDED 10-252806/824-()	V. JONES	1-19-07



STAMP
PC NUMBER
OPPOSITE
KEYWAY
PER 9-2811
EXAMPLE:
PC06A-8-2P

5



VIEW B

ACCESSORIES
(NOT PART OF STANDARD ASSEMBLY)

SEE DRAWING
10-150000

SEE SHEET 2
NOTES: REF SYMBOL

ITEM NO.	QTY REQD	DESCRIPTION	PART NUMBER	CODE IDENT	ZONE	NEXT ASSEMBLY
PARTS LIST						
UNLESS OTHERWISE SPECIFIED		DRAWN: E. MICHELS	DATE: 6-10-55	<div> <div>THE Bendix CORPORATION</div> <div>SCINTILLA DIVISION</div> <div>SIDNEY, NEW YORK, U.S.A.</div> </div>		
LINEAR DIMENSIONS ARE IN INCHES.		CHECKED: <i>Slawson</i>	DATE: 1-21-66			
TOLERANCES: 3 PLACES ± .010,		MATERIAL:				
2 PLACES ± .03; 1 PLACE ± .1;		STANDARDS: BALANTIC/EH	1-21-66			
ANGLES ± 2°. OTHER STANDARDS PER SCINTILLA SPEC 9-3800 AND MIL-STD 8.		DRAFTING: <i>Slawson</i>	1-21-66			
MATERIAL SPEC		PROCESS SPEC SEE SHEET 2	ENGINEERING: <i>Slawson</i>	1-21-66	<div> <div>CONNECTOR, ELECTRICAL PLUG, TYPE PGA()MC, CADMIUM PLATED</div> <div>10-104606 THRU 10-104650</div> </div>	
			DEVELOPMENT: <i>Slawson</i>	1-20-66		
					CODE IDENT NO.	SIZE
					77820	C
					SCALE NONE	WT
					REF	SHEET 1 OF 2

10-104606/50 SCANNED

REL NO. 31508-162		REVISIONS	
CHG NO.	SYM	DESCRIPTION	DATE
		SEE SHEET 1 FOR ALL CHANGES	
			APPROVED

ASSEMBLY NUMBER	PC NO.	A THREAD		C +.010 -.025	J ±.005	L +.025 -.015	N DIA +.000 -.047	Q	V THREAD (PLATED) CLASS 2A	Z ±.035
		CLASS 2B	MODIFIED MINOR DIA							
10-104606-	06A-6-	.3750-0.05P-0.1L-DS	.347-.352	.328	.328	1.176	.442	.594	.3750-32UNEF	.551
10-104608-	-8-	.5000-0.05P-0.1L-DS	.471-.476				.570	.719	.5000-28UNEF	
10-104610-	-10-	.6250-0.05P-0.1L-DS	.593-.598				.679	.844	.6250-24UNEF	
10-104612-	-12-	.7500-0.1P-0.2L-DS	.718-.723				.814	.969	.7500-20UNEF	
10-104614-	-14-	.8750-0.1P-0.2L-DS	.843-.848				.950	1.094	.8750-20UNEF	
10-104616-	-16-	1.0000-0.1P-0.2L-DS	.968-.973				1.068	1.219	1.0000-20UNEF	
10-104618-	-18-	1.1250-0.1P-0.2L-DS	1.085-1.090				1.196	1.344	1.1875-18UNEF	
10-104620-	-20-	1.2500-0.1P-0.2L-DS	1.210-1.215			1.235	1.312	1.468	1.1875-18UNEF	.706
10-104622-	-22-	1.3750-0.1P-0.2L-DS	1.335-1.340			1.235	1.440	1.594	1.4375-18UNEF	.706
10-104624-	-24-	1.5000-0.1P-0.2L-DS	1.460-1.465		.415	1.210	1.567	1.718	1.4375-18UNEF	.619
10-104625/50										

5. ADDITIONAL OR ALTERNATE STAMPING PERMISSIBLE AS SPECIFIED BY PROCUREMENT DOCUMENT.
4. INSERTS AND CONTACTS MUST NOT BE REMOVED.
3. FOR MATING RECEPTACLE ASSEMBLY SEE DRAWINGS 10-104206/50 & OTHERS.
2. TO COMPLETE ASSEMBLY NO. 8 PC NO., ADD APPLICABLE INSERT ARRANGEMENT SUFFIX TO BASE NUMBERS LISTED ABOVE PER 9-2437-1.
1. FOR CONTACT ARRANGEMENTS, SEE DRAWINGS L-15206 THRU L-15250-().
9. SEE SEPARATE PARTS LIST FOR COMPONENT PART NUMBERS AND QUANTITIES.
8. FOR PART NUMBER 10-104614-91, SEE INDIVIDUAL DRAWING.
7. UNITS ILLUSTRATED MEET THE MATERIAL & FINISH REQUIREMENTS OF MIL-C-26482, EXCEPT SHELL IS BRIGHT CADMIUM PLATED PER QQ-P-416.
6. DISTANCE BETWEEN END OF SHELL & THE POINT AT WHICH A GAGE PIN, HAVING THE SAME BASIC DIAMETER AS THE MATING CONTACT & A SQUARE FACE, ENGAGES SOCKET CONTACT SPRING.

NOTES: REF SYMBOL

SOLDER WELL DATA			
CONTACT SIZE	20	16	12
WELL DIA	.046 ^{+.004} _{-.000}	.078 ^{+.004} _{-.002}	.116 ^{+.004} _{-.002}
WELL DEPTH	.125 ^{+.031} _{-.000}	.188	.188

ITEM NO	QTY REQD	DESCRIPTION	PART NUMBER	CODE IDENT	ZONE
PARTS LIST					
UNLESS OTHERWISE SPECIFIED		DRAWN E. MICHELS DATE 6-10-55			
LINEAR DIMENSIONS ARE IN INCHES		CHECKED <i>Shawson</i> DATE 1-21-66			
TOLERANCES 3 PLACES ±.010,		MATERIAL			
2 PLACES ±.03, 1 PLACE ±.1;		STANDARDS BALANTIC/EH 1-21-66			
ANGLES ±2° OTHER STANDARDS PER		DRAFTING <i>Shawson</i> 1-21-66			
SCINTILLA SPEC 9-3800 AND MIL STD 8		ENGINEERING <i>Shawson</i> 1-21-66			
MATERIAL SPEC		DEVELOPMENT <i>Shawson</i> 1-20-66			
PROCESS SPEC		TEST 9-4003-2			
		ASSY 9-3443-1			
		9-2437-1			
		9-2811			

THERMOCOUPLE CONTACT IDENTIFICATION (WHERE APPLICABLE)	
MATERIAL	IDENTIFICATION
CHROMEL	WHITE
ALUMEL	GREEN
IRON	BLACK
CONSTANTAN	YELLOW

THE Bendix CORPORATION		SCINTILLA DIVISION	
SIDNEY, NEW YORK, U.S.A.		TITLE	
		CONNECTOR, ELECTRICAL PLUG, TYPE PGA()MC, CADMIUM PLATED	
CODE IDENT NO.	SIZE	10-104606 THRU 10-104650	
77820	C		
SCALE NONE	WT	REF	SHEET 2