



Color: ■ gray

Physical data	
Width	1 mm / 0.039 inches
Height	92.8 mm / 3.654 inches
Depth	23.3 mm / 0.917 inches

Material data	
Note (material data)	Information on material specifications can be found here
Color	gray
Material group	I
Insulation material (main housing)	Polyamide (PA66)
Flammability class per UL94	V0
Fire load	0.07 MJ
Weight	2.3 g


Environmental requirements	
Processing temperature	-35 ... +85 °C
Continuous operating temperature	-60 ... +105 °C



Commercial data	
Product Group	1 (Rail Mounted Terminal Blocks)
PU (SPU)	100 (25) pcs
Packaging type	Box
Country of origin	DE
GTIN	4017332337267
Customs tariff number	85389099990







Product classification		
UNSPSC		39121402

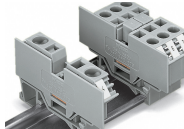
Environmental Product Compliance	
RoHS Compliance Status	Compliant,No Exemption

Downloads	
Environmental Product Compliance	
Compliance Search	
Environmental Product Compliance 282-358	

Documentation				
Additional Information		Bid Text		
Technical Section	pdf 2246.92 KB	282-358	19.02.2019	xml 2.49 KB
		282-358	02.05.2017	doc 23.50 KB
				

CAD/CAE-Data				
CAD data		CAE data		
2D/3D Models 282-358		EPLAN Data Portal 282-358		
		WSCAD Universe 282-358		
		ZUKEN Portal 282-358		

Installation Notes	
Installation	



Snapping a cover plate onto open side of terminal block.

A cover plate must also be snapped onto the other side of the larger terminal block.

Subject to changes. Please also observe the further product documentation!

Current addresses can be found at: www.wago.com