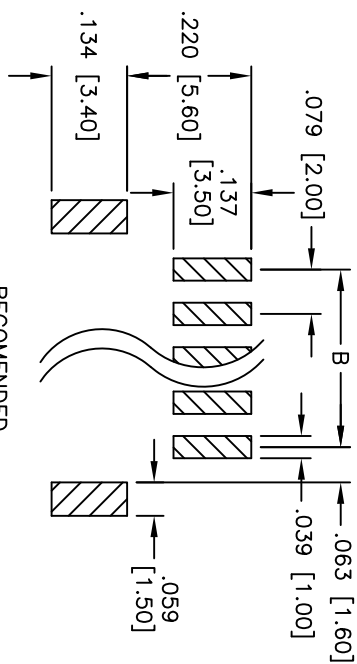
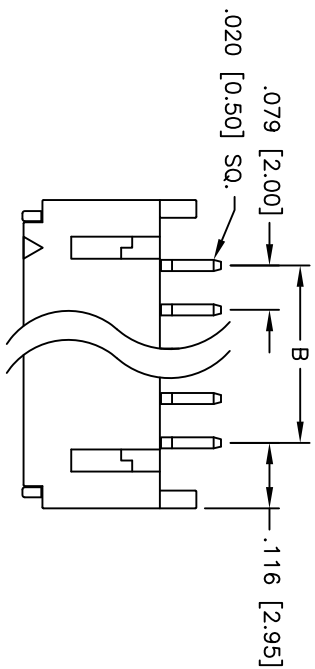
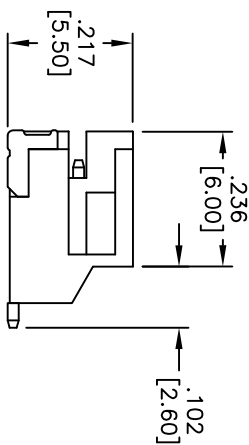
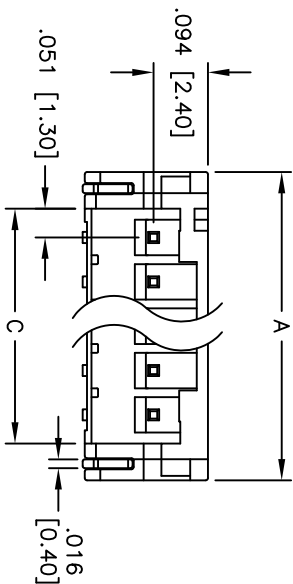


APPROVED: _____
DATE: _____ TITLE: _____

Rev	AWO #	Description	Date	Appr
-	-	RELEASED	12/15/06	
A		REVISED SPEC	8/5/11	



RECOMMENDED
PCB LAYOUT



SPECIFICATIONS:

Material:

Insulator: Hi-temp thermoplastic, rated UL 94V-0

Insulator color: White

Contacts: Brass

Plating:

Tin over Copper underplate overall

Electrical:

Operating voltage: 100 VAC max

Current rating: 2 Amps max

Contact resistance: 10 mohms max

Insulation resistance: 1,000 Mohms min @ 500 VDC

Dielectric withstanding voltage: 1,000 VAC for 1 minute

Temperature Rating:

Operating temperature: -25°C to +85°C

Environmental:

Lead free, RoHS compliant



PACKAGED ON TAPE & REEL

Positions: 2 thru 16

A = .079 [2.00] x No. of Positions + .153 [3.90]

B = .079 [2.00] x No. of Spaces

C = .079 [2.00] x No. of Positions + .024 [0.60]

ADAM TECH

909 Rahway Avenue, Union, NJ 07083

Phone: 908-687-5000 Fax: 908-687-5710

079 [2.00] SHROUDED HEADER

RIGHT ANGLE, SURFACE MOUNT

UNLESS OTHERWISE SPECIFIED ALL DIMENSIONS ARE INCHES [MM] TOLERANCES: EXCEPT AS NOTED INCHES				HOLES			
.X	± .10	Ø.X	± .10	.X	± .10	Ø.X	± .10
.XX	± .020	Ø.XX	± .015	.XX	± .015	Ø.XX	± .010
.XXX	± .015	Ø.XXX	± .010	.XXX	± .015	Ø.XXX	± .010
APPROVALS				DATE			
DRAWN	BW		12/15/06				
CHECKED							
APPROVED							