



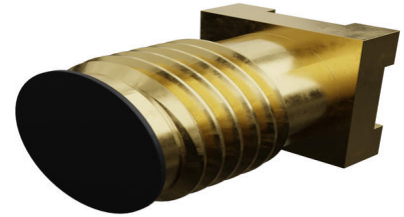
Part Number : [732511355](#)

Product Description : SMA Jack, Straight, PCB Receptacle, Surface Mount, Gold (Au) Body, with Pick-and-Place Polyimide Film, Tape and Reel (400 Pieces), 50 Ohms

Series Number : 73251

Status : Active

Product Category : RF / Coaxial Connectors



Documents and Resources

Drawings

[732511355 sd.pdf](#)

[SD-73251-135-PKG-001.pdf](#)

3D Models and Design Files

[STEP AP242](#)

[SOLIDWORKS](#)


[Creo](#)

Specifications

[PS-89675-346-001.pdf](#)

Product Environment Compliance

Compliance

GADSL/IMDS	Not Relevant
China RoHS	 per SJ/T 11365-2006
EU ELV	Not Relevant
Low-Halogen Status	Low-Halogen per IEC 61249-2-21
REACH SVHC	Contains Lead per D(2025)4165-DC (25 June 2025)
EU RoHS	Compliant with Exemption 6(c) per EU 2015/863

[Compliance Statements](#)

- EU RoHS
- REACH SVHC
- Low-Halogen

Industry Documents

- IPC 1752A Class C
- IPC 1752A Class D
- Molex Product Compliance Declaration
- IEC-62474
- chemSHERPA (xml)

Substances of Interest

- PFAS

EU RoHS Certificate of Compliance

Additional Product Compliance Information

Part Details

General

Status	Active
Category	RF / Coaxial Connectors
Series	73251
Description	SMA Jack, Straight, PCB Receptacle, Surface Mount, Gold (Au) Body, with Pick-and-Place Polyimide Film, Tape and Reel (400 Pieces), 50 Ohms
Application	RF
Product Name	SMA
Style	PCB
Type	Subminiature
UPC	887191360706

Electrical

Frequency	18 GHz
Impedance	50Ω
Power / Voltage	VOLTAGE: 500 Vrms@Sea Level

Physical

Cable Attachment	N/A
------------------	-----

Gender	Jack
Keying to Mating Part	N/A
Net Weight	1.265/g
Orientation	Straight
Packaging Type	Embossed Tape on Reel
Panel Mount	No
Panel Mount Method	N/A
PCB Mounting	Surface Mount
PCB Thickness - Recommended	N/A
Reverse Polar	No
Wire/Cable Type	N/A

Solder Process Data

Max-Duration	10
Lead-Free Process Capability	REFLOW
Max-Cycle	2
Max-Temp	260

This document was generated on Apr 29, 2026