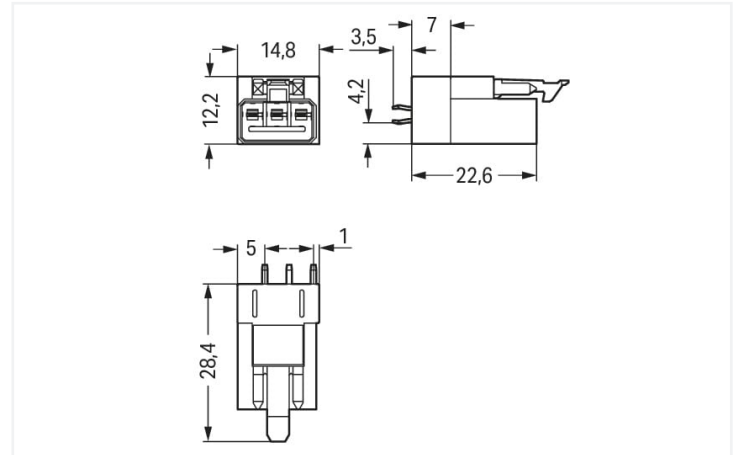
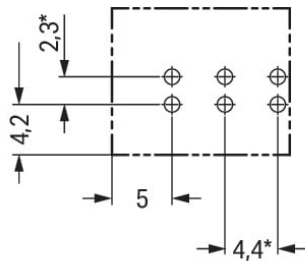




Color:  black



Dimensions in mm



* ± 0.05 mm

Drilled hole diameter: $1.3^{+0.1}$ mm

Dimensions in mm

Male connector/plug WINSTA® MINI 3-pole

WAGO has various connection solutions for any challenge in building installation, for example, the WINSTA® MINI male connector/plug. Our extensive selection of pluggable PCB connectors with different insertion directions and operating variants offers you the perfect solution for your application at any time. For greater protection in electrical installations, the pcb connector is equipped with mechanical protection against mismatching. Thanks to the color coding and mechanical A coding of WINSTA® MINI pcb connectors, you can clearly distinguish different circuits. Especially where space is tight, our smallest pluggable connection system, WINSTA® MINI, conveniently displays its advantageous properties. It saves space, and, with Push-in CAGE CLAMP® spring pressure connection technology, it additionally can be installed quickly, since the connection is low-maintenance and requires no screw connections.

Push-in CAGE CLAMP® spring pressure connection technology – pluggable installation instead of laborious screw connections!

The WINSTA® Pluggable Connection System allows pluggable electrical installation. This saves time, lowers costs, and reduces the need for servicing. Take advantage of the pluggable version of our maintenance-free spring pressure connection technology too! Plan your installation with WINSTA® MINI pcb connectors with protection against mismatching from WAGO.

- protection against mismatching eliminates errors
- consistent IP40 protection
- with A coding for a large number of applications
- convenient installation and commissioning



Electrical data			
Ratings per IEC/EN		Ratings per UL 1977	
Ratings per	IEC/EN 60664-1	Note for the US market	Some versions may also be used for current interruption in accordance with the UL certificate in select applications with currents below 5 A and voltages up to 600 V. For further information, please contact your local sales office.
Nominal voltage (III/3)	250 V		
Rated impulse voltage (III/3)	4 kV		
Rated current	16 A		
Legend (ratings)	(III / 3) Δ Overvoltage category III / Pollution degree 3	Rated voltage (UL 1977)	600 V
		Rated current UL 1977	14 A

General	
Note on contact resistance	approx. 1 mΩ of contact resistance approx. 0.25 mΩ contact transition plug/socket

Connection data			
Total number of potentials	3	Connection 1	
Number of levels	1	Pole number	3
PE function	Preceding PE contact		

Physical data		
Pin spacing	4.4 mm / 0.173 inches	
Width	14.8 mm / 0.583 inches	
Height	31.9 mm / 1.256 inches	
Height from the surface	28.4 mm / 1.118 inches	
Depth	12.2 mm / 0.48 inches	
Solder pin length	3.5 mm	
Solder pin dimensions	1 x 0.8 mm	
Drilled hole diameter with tolerance	1.3 ^(+0.1) mm	

Mechanical Data	
Application	General mains applications
Coding	A
Variable coding	No
Marking	N ⊕ L
Potential marking	N ⊕ L
Mating force of a plug-in connection	approx. 20 ... 70 N (depending on pole number)
Retention force of a plug-in connection	Locked: > 80 N
Unmating force of a plug-in connection	Unlocked: approx. 20 ... 70 N (depending on pole number)
Number of mating cycles	200, without resistive load
Design	straight

Plug-in connection

Contact type (pluggable connector)	Male connector/plug
Connector (connection type)	for PCB
Mismating protection	Yes
Note on mismating protection	All WINSTA® components are 100% protected against mismating when: a.) plugging different numbers of poles b.) plugging while rotated 180 c.) plugging while laterally staggered d.) plugging one pole
Mating direction to the PCB	90 °
Locking lever	Yes
Locking of plug-in connection	Locking lever
Note on locking system	All connectors for mounted installations (snap-in versions for lighting fixtures or devices, all types of PCB and distribution connectors) are factory-equipped with locking levers to ensure plugs and sockets are securely locked. Additional locking levers are only required for flying leads (plug/socket).

PCB contact

PCB contact	THT
Solder pin arrangement	2 in-line solder pins/pole
Number of solder pins per potential	2

Material Data

Note (material data)	Information on material specifications can be found here
Color	black
Cover color	gray
Material group	I
Insulation material	Polyamide (PA66)
Flammability class per UL94	V0
Clamping spring material	Chrome-nickel spring steel (CrNi)
Contact material	Copper or copper alloy; surface-treated
Contact plating	Tin
Fire load	0.064 MJ
Weight	3.2 g

Environmental requirements

Processing temperature	-5 ... +40 °C
Continuous operating temperature	-35 ... +85 °C
Note on continuous operating temperature	Insulating parts for temperatures ≤ 105 °C

Commercial data

Product Group	20 (Winsta)
eCl@ss 10.0	27-44-06-05
eCl@ss 9.0	27-44-06-05
ETIM 8.0	EC002560
ETIM 7.0	EC002560
PU (SPU)	100 pcs
Packaging type	Box
Country of origin	PL
GTIN	4050821695509
Customs tariff number	85366990990



Approvals / Certificates

General approvals



Approval	Standard	Certificate Name
CCA DEKRA Certification B.V.	EN 61535	71-123231
CCA DEKRA Certification B.V.	IEC 61535	NL-85020
cURus Underwriters Laboratories Inc.	UL 1977	E45171

Approvals for marine applications



Approval	Standard	Certificate Name
ABS American Bureau of Ship- ping	Steel Vessel Rules	19-HG1869855-PDA
DNV GL Det Norske Veritas, Ger- manischer Lloyd	-	TAE00001Z6
LR Lloyds Register	EN 61535	08/20047 (E2)

Downloads

Environmental Product Compliance

Compliance Search

Environmental Product
Compliance 890-813



CAD/CAE-Data

CAD data

2D/3D Models 890-813



CAE data

ZUKEN Portal 890-813



Subject to changes. Please also observe the further product documentation!

Current addresses can be found at: www.wago.com