



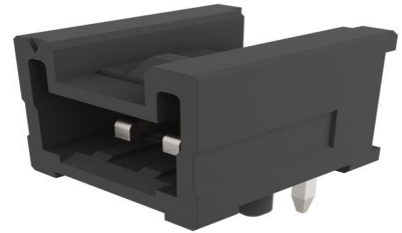
**Part Number :** [2200980271](#)

**Product Description :** 1.25mm Pitch, Micro-Lock Plus PCB Header, Single Row, Right-Angle, Through Hole, Tin-Bismuth Plating, Positive Lock, 2 Circuits, Black

**Series Number :** 220098

**Status :** Active

**Product Category :** PCB Headers and Receptacles



---

## Documents and Resources

### Drawings

[2200980271 sd.pdf](#)

### 3D Models and Design Files

[STEP AP242](#)

[SOLIDWORKS](#)

[Creo](#)

[Symbol and Footprint \(Multi-Format\)](#)

[2200980271.dxf](#)

### Specifications

[5055650000-AS-000.pdf](#)

[2200989200-SPK-200.pdf](#)


[2045320002-PS-000.pdf](#)

[2145260003-PS-000.pdf](#)

---

## Product Environment Compliance

### Compliance

GADSL/IMDS	Not Relevant
China RoHS	 per SJ/T 11365-2006
EU ELV	Not Relevant
Low-Halogen Status	Low-Halogen per IEC 61249-2-21
REACH SVHC	Not Contained per D(2025)7771-DC (04 Feb 2026)

EU RoHS	Compliant per EU 2015/863
---------	---------------------------

### Compliance Statements

- EU RoHS
- REACH SVHC
- Low-Halogen

### Industry Documents

- IPC 1752A Class C
- IPC 1752A Class D
- Molex Product Compliance Declaration
- IEC-62474
- chemSHERPA (xml)

### Substances of Interest

- PFAS

### EU RoHS Certificate of Compliance

### Additional Product Compliance Information

## Part Details

### General

Status	Active
Category	PCB Headers and Receptacles
Series	220098
Description	1.25mm Pitch, Micro-Lock Plus PCB Header, Single Row, Right-Angle, Through Hole, Tin-Bismuth Plating, Positive Lock, 2 Circuits, Black
Application	Wire-to-Board
Component Type	PCB Header
Keyword	Micro-Lock Plus 1.25
Product Name	Micro-Lock Plus
UPC	196823184390

### Agency

UL	E29179
----	--------

### Electrical

Current - Maximum per Contact	3.1A
-------------------------------	------

Voltage - Maximum	50V AC (RMS)/DC
-------------------	-----------------

## Physical

Breakaway	No
Circuits (Loaded)	2
Circuits (maximum)	2
Color - Resin	Black
First Mate / Last Break	No
Flammability	94V-0
Glow-Wire Capable	No
Guide to Mating Part	No
Keying to Mating Part	Yes
Lock to Mating Part	Yes
Material - Metal	Brass
Material - Plating Mating	Tin-Bismuth
Material - Plating Termination	Tin-Bismuth
Material - Resin	Polyamide (PA)
Net Weight	78.890/mg
Number of Rows	1
Orientation	Right Angle
Packaging Type	Tray
PCB Locator	No
PCB Retention	Yes
Pitch - Mating Interface	1.25mm
Pitch - Termination Interface	1.25mm
Plating min - Mating	1.000µm
Plating min - Termination	1.000µm
Polarized to Mating Part	Yes
Polarized to PCB	Yes
Shrouded	Shrouded
Stackable	No
Temperature Range - Operating	-40° to +105°C
Termination Interface Style	Through Hole

---

## Mates With / Use With

## Mates with Part(s)

Description	Part Number
1.25mm Pitch Micro-Lock Plus Single Row Receptacle Housings	<u>204532</u>
1.25mm Pitch Micro-Lock Plus TPA Type Single Row Receptacle Housings	<u>214526</u>

---

This document was generated on May 20, 2026