

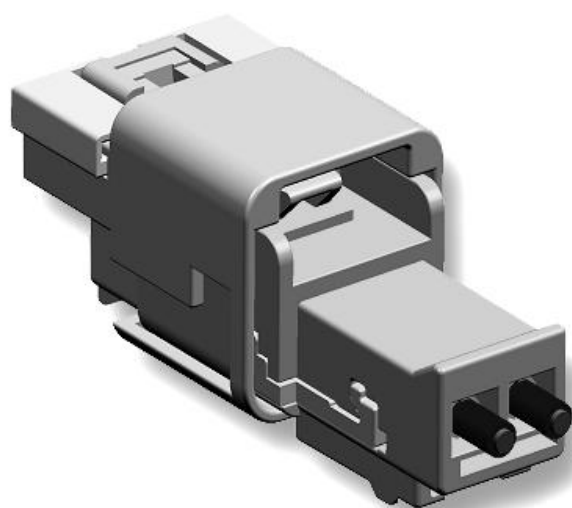
DELPHI

Assembly Manuals

2 - 6-way Connector Family for GT 280 Terminal System

UNSEALED

Assembly / Disassembly



REV 04, May 2013

15326994

15326995

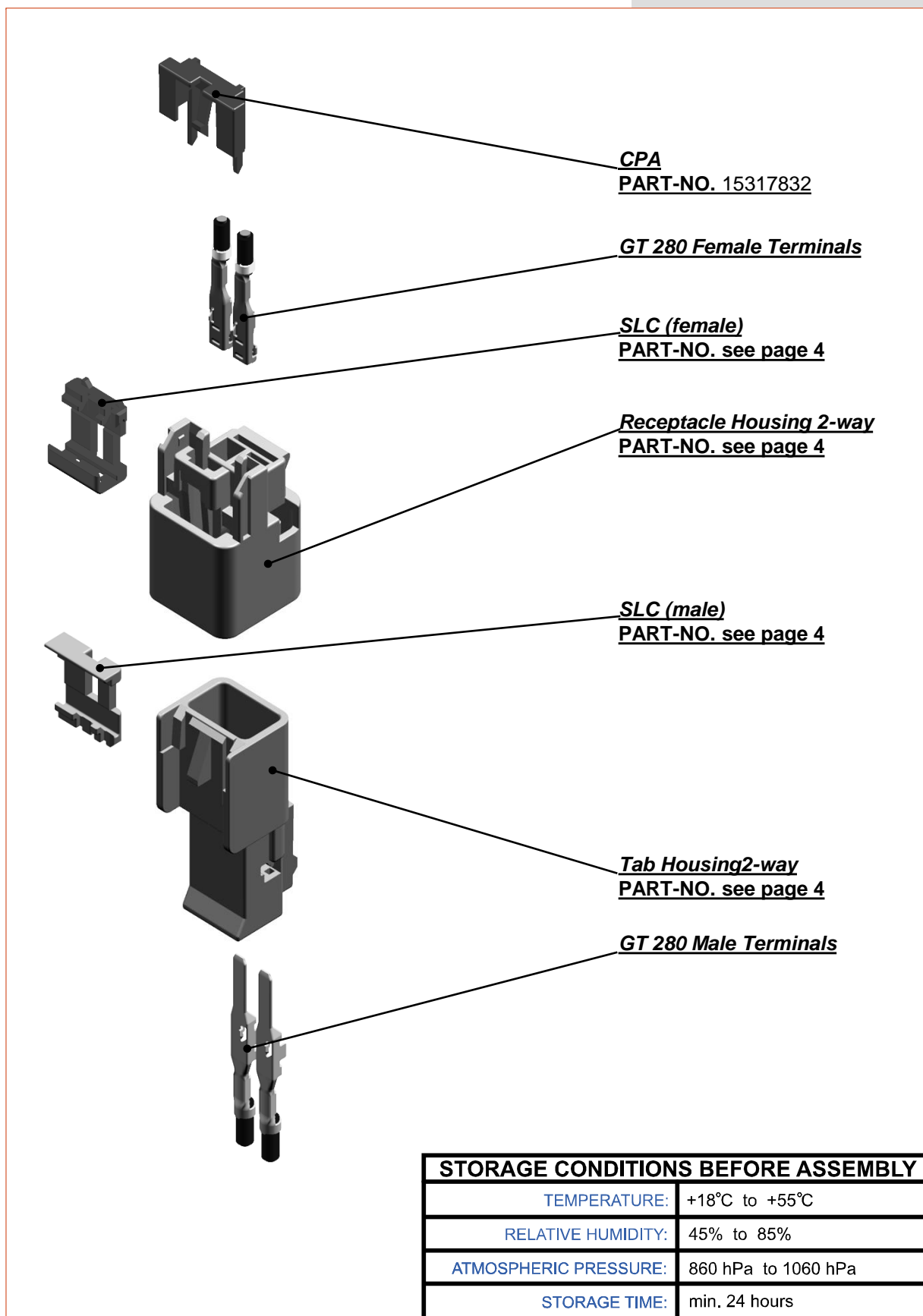
15326998

D

	Page
Exploded view	3
List of components	4, 5
View of versions	6, 7
FEMALE SEQUENCE	8
Pre-assembly:	8
Step F-1: inserting SLC	8
Step F-2: inserting CPA	9
Assembly:	10
Step F-3: inserting GT 280 Female Terminals	10
Step F-4: pushing SLC	11
Step F-5: electrical test	12
MALE SEQUENCE	13
Pre-assembly:	13
Step M-1: inserting SLC	13
Assembly:	14
Step M-2: inserting GT 280 Male Terminals	14
Step M-3: pushing SLC	15
Step M-4: electrical test	16
CONNECTING SEQUENCE:	17
Step C-1: connecting Connectors	17
Step C-2: locking CPA	18
Disassembly sequence	19
Table of tools	26
Revisions	27

The information contained in these assembly instructions is subject to alteration without prior notice and does not represent any obligation on the part of DELPHI. All information is correct at the time of releasing. Reprinting or translation is not permitted without written permission from DELPHI. © Copyright 2013 DELPHI. All rights reserved.

EXPLODED VIEW



LIST OF COMPONENTS

Component (single parts)	Delphi PART-NO.*	Customer PART NO.	amount
Receptacle Housing 2-way	15326869	-	1
Tab Housing 2-way	15326873	-	1
CPA	15317832	-	1
SLC (female)	15326872	-	1
SLC (male)	15326875	-	1
Receptacle Housing 3-way	15326876	-	1
Tab Housing 3-way	15326880	-	1
CPA	15317832	-	1
SLC (female)	15326879	-	1
SLC (male)	15326884	-	1
Receptacle Housing 4-way	15326885	-	1
Tab Housing 4-way	15326889	-	1
CPA	15317832	-	1
SLC (female)	15326888	-	1
SLC (male)	15326891	-	1
Receptacle Housing 5-way	15326892	-	1
Tab Housing 5-way	15326896	-	1
CPA	15317832	-	1
SLC (female)	15326895	-	1
SLC (male)	15326898	-	1
Receptacle Housing 6-way	15326899	-	1
Tab Housing 6-way	15326903	-	1
CPA	15317832	-	1
SLC (female)	15326902	-	1
SLC (male)	15326905	-	1

Component (pre-assembled parts)	Delphi PART-NO.*	Customer PART NO.	amount
Receptacle Hsg 2-way + SLC + CPA	15326871	-	1
Receptacle Hsg 3-way + SLC + CPA	15326878	-	1
Receptacle Hsg 4-way + SLC + CPA	15326887	-	1
Receptacle Hsg 5-way + SLC + CPA	15326894	-	1
Receptacle Hsg 6-way + SLC + CPA	15326901	-	1
Tab Hsg 2-way + SLC	15326874	-	1
Tab Hsg 3-way + SLC	15326881	-	1
Tab Hsg 4-way + SLC	15326890	-	1
Tab Hsg 5-way + SLC	15326897	-	1
Tab Hsg 6-way + SLC	15326904	-	1

* - These Part-No.'s are for reference

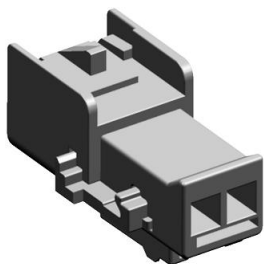
LIST OF COMPONENTS

Component (single parts)	Delphi PART-NO.*	Customer PART NO.	amount
Receptacle Housing 2-way	15326869	-	1
Tab Housing 2-way	15326873	-	1
SLC (female)	15326872	-	1
SLC (male)	15326875	-	1
Receptacle Housing 3-way	15326876	-	1
Tab Housing 3-way	15326880	-	1
SLC (female)	15326879	-	1
SLC (male)	15326884	-	1
Receptacle Housing 4-way	15326885	-	1
Tab Housing 4-way	15326889	-	1
SLC (female)	15326888	-	1
SLC (male)	15326891	-	1
Receptacle Housing 5-way	15326892	-	1
Tab Housing 5-way	15326896	-	1
SLC (female)	15326895	-	1
SLC (male)	15326898	-	1
Receptacle Housing 6-way	15326899	-	1
Tab Housing 6-way	15326903	-	1
SLC (female)	15326902	-	1
SLC (male)	15326905	-	1

Component (pre-assembled parts)	Delphi PART-NO.*	Customer PART NO.	amount
Receptacle Hsg 2-way + SLC	15326870	-	1
Receptacle Hsg 3-way + SLC	15326877	-	1
Receptacle Hsg 4-way + SLC	15326886	-	1
Receptacle Hsg 5-way + SLC	15326893	-	1
Receptacle Hsg 6-way + SLC	15326900	-	1
Tab Hsg 2-way + SLC	15326874	-	1
Tab Hsg 3-way + SLC	15326881	-	1
Tab Hsg 4-way + SLC	15326890	-	1
Tab Hsg 5-way + SLC	15326897	-	1
Tab Hsg 6-way + SLC	15326904	-	1

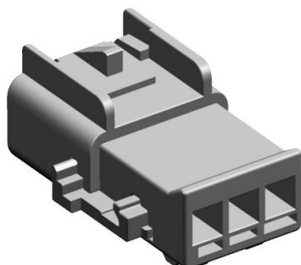
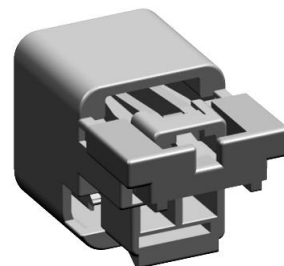
* - These Part-No.'s are for reference

VIEW OF VERSIONS



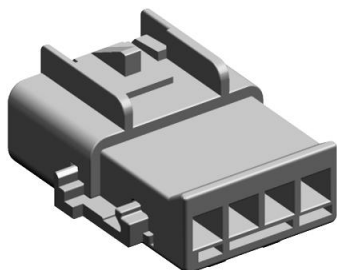
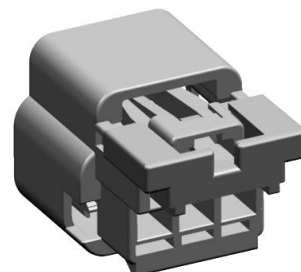
Male 2-way
PN 15326874

Female 2-way
PN 15326871



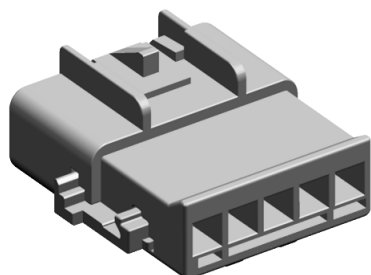
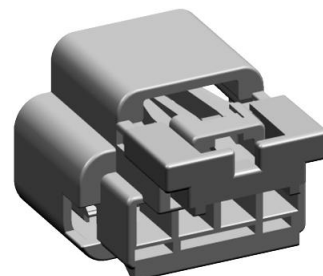
Male 3-way
PN 15326881

Female 3-way
PN 15326878



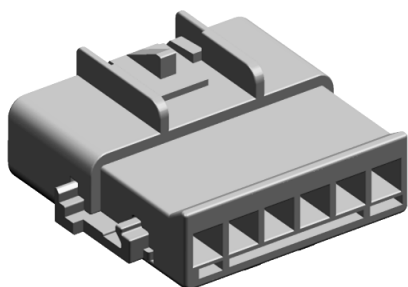
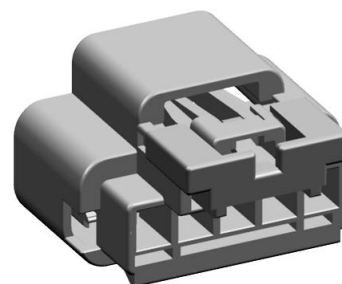
Male 4-way
PN 15326890

Female 4-way
PN 15326887



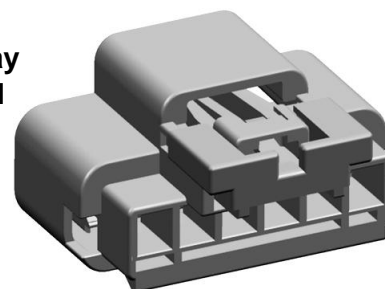
Male 5-way
PN 15326897

Female 5-way
PN 15326894



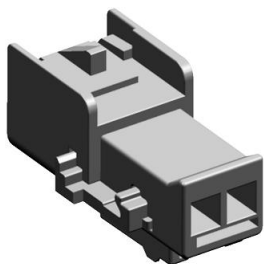
Male 6-way
PN 15326904

Female 6-way
PN 15326901



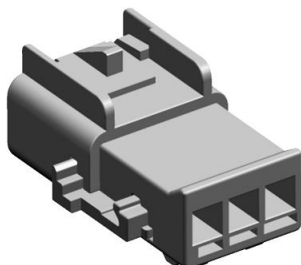
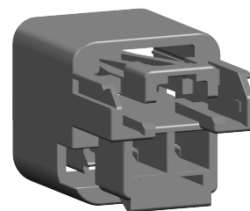
**Pictures used in this Assembly Manual and original parts may differ in some details,
This difference has no influence on the assembly process .**

VIEW OF VERSIONS



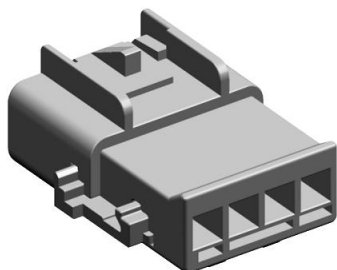
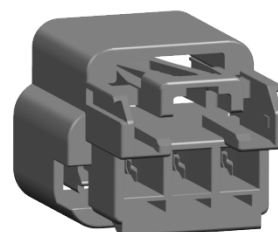
Male 2-way
PN 15326874

Female 2-way
PN 15326870



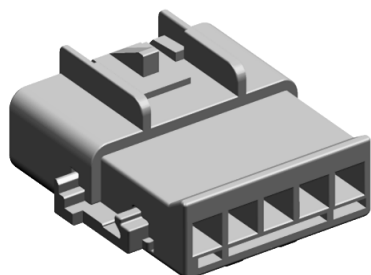
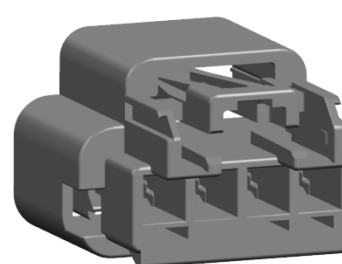
Male 3-way
PN 15326881

Female 3-way
PN 15326877



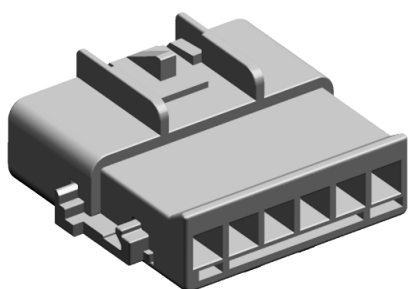
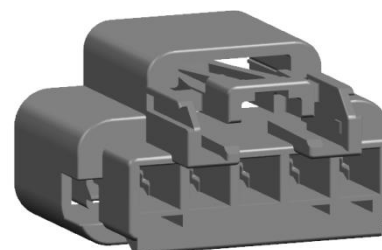
Male 4-way
PN 15326890

Female 4-way
PN 15326886



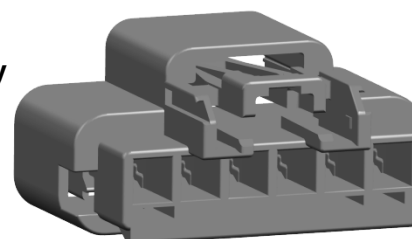
Male 5-way
PN 15326897

Female 5-way
PN 15326893



Male 6-way
PN 15326904

Female 6-way
PN 15326900



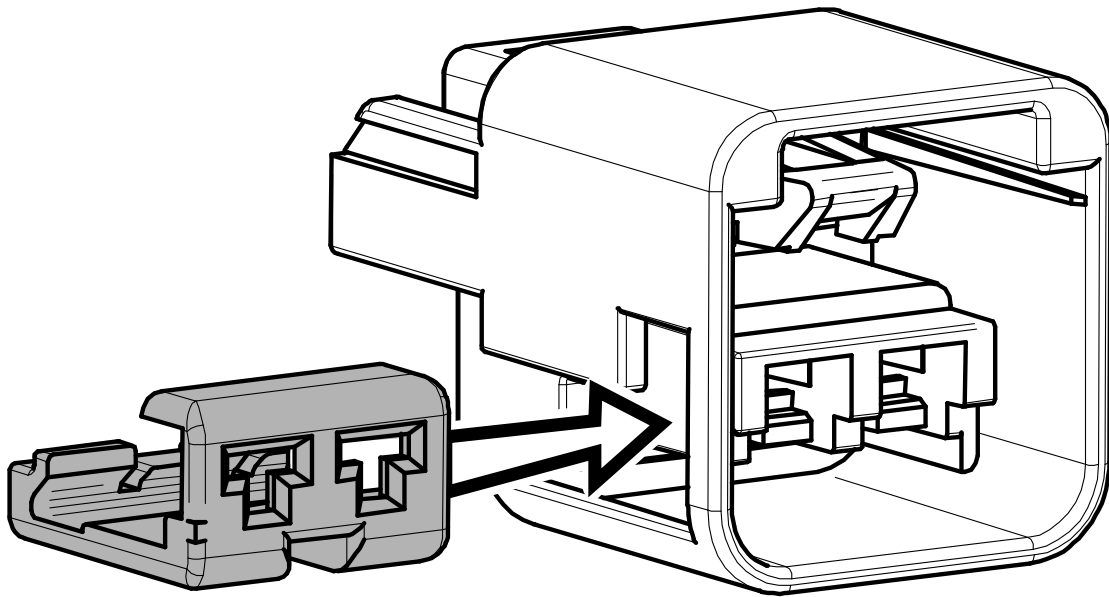
Pictures used in this Assembly Manual and original parts may differ in some details,
This difference has no influence on the assembly process .

PRE-ASSEMBLY

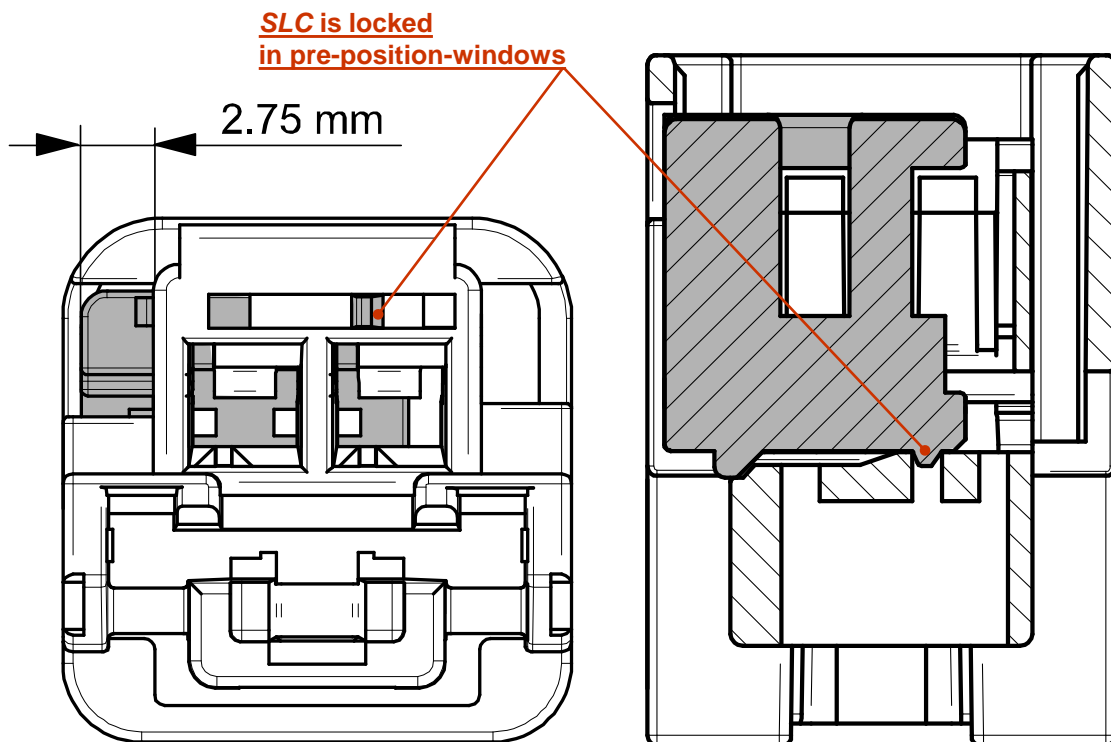
RECEPTACLE HOUSING 2-WAY

P R E A S S E M B L Y

INSERTING SLC



Step F-1: Using assembly tool (see tool examples on page 24) insert **SLC** until it is correctly closed in pre-position-windows.

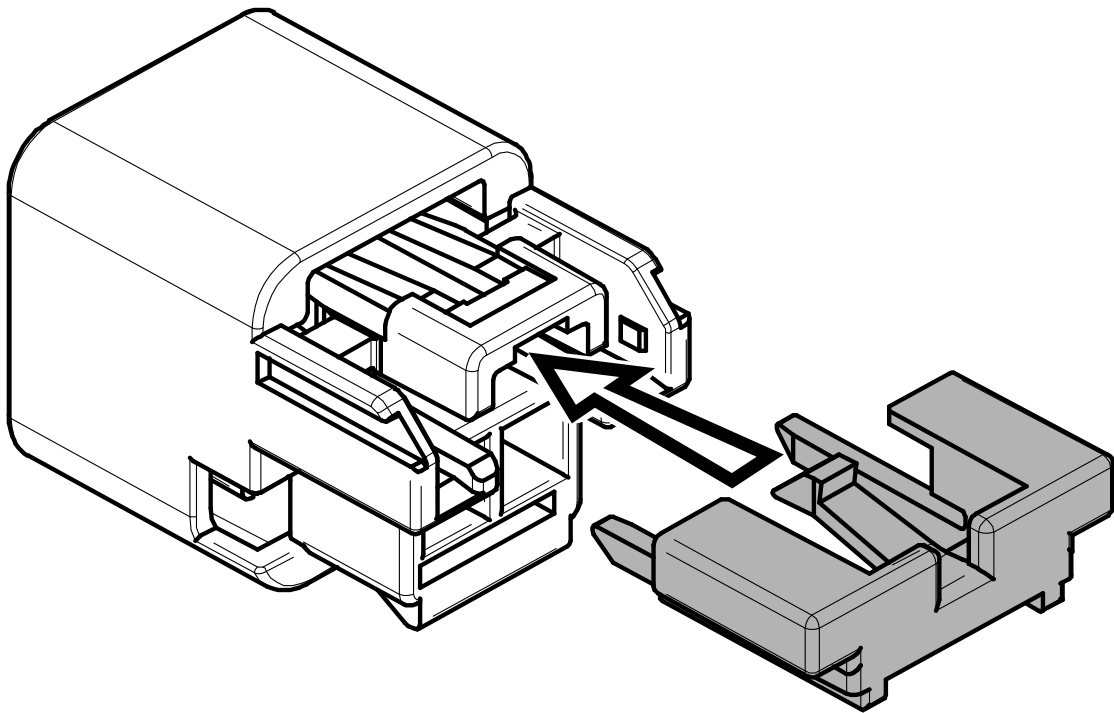


Step F-1 completed.

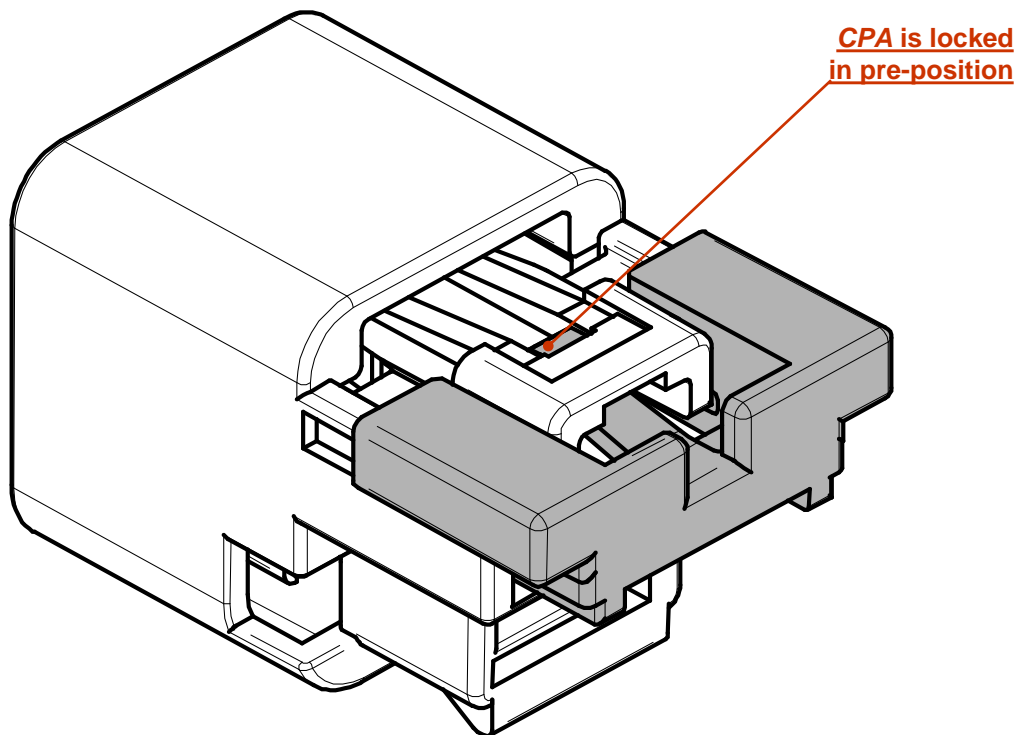
RECEPTACLE HOUSING 2-WAY

P
R
E
A
S
S
E
M
B
L
Y

INSERTING CPA



Step F-2: Insert *CPA* until it is locked in pre-assembled position



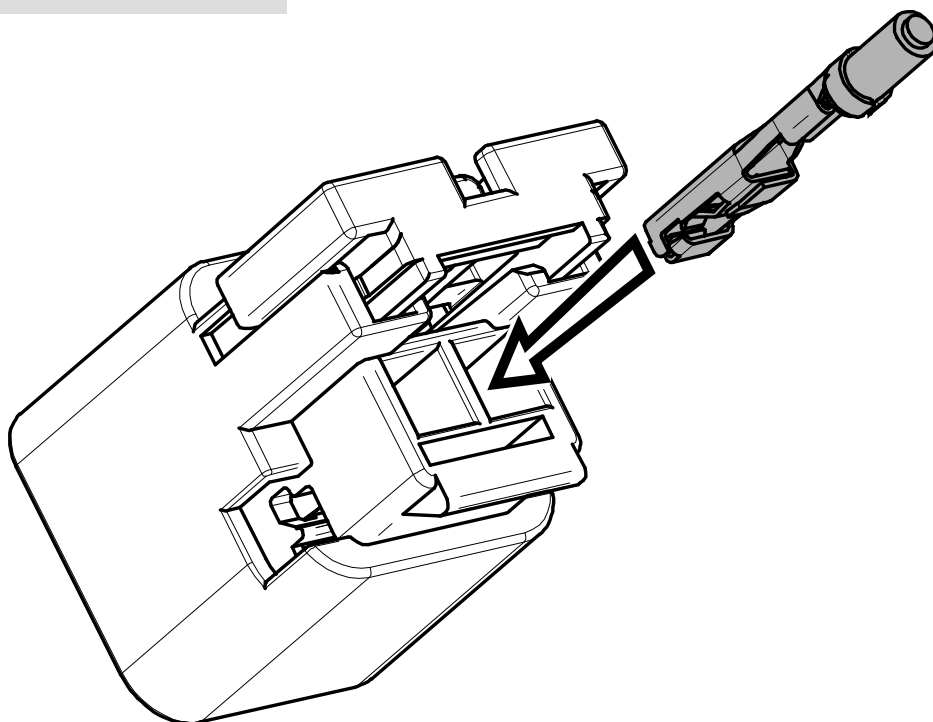
Step F-2 completed.

ASSEMBLY

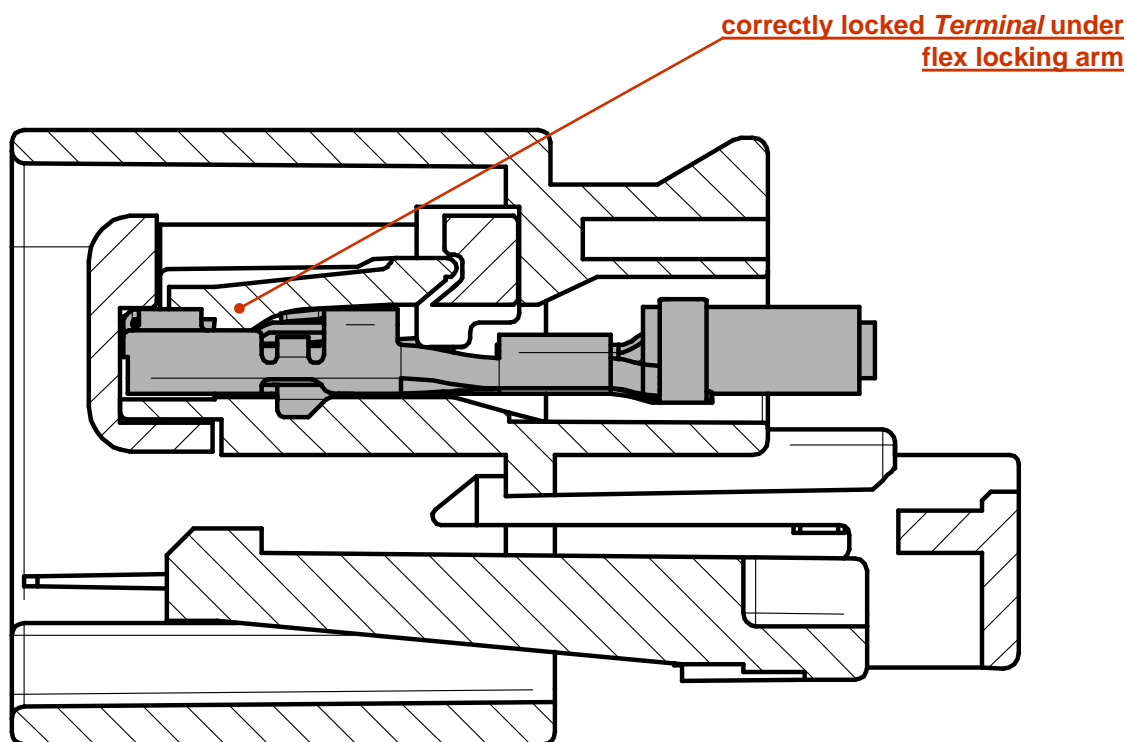
RECEPTACLE HOUSING 2-WAY

A S S E M B L Y

INSERTING GT 280



Step F-3: Insert *GT 280 Female Terminals* into *Receptacle Housing 2-way* according to insertion plan. Proper orientation of *Terminal* required.

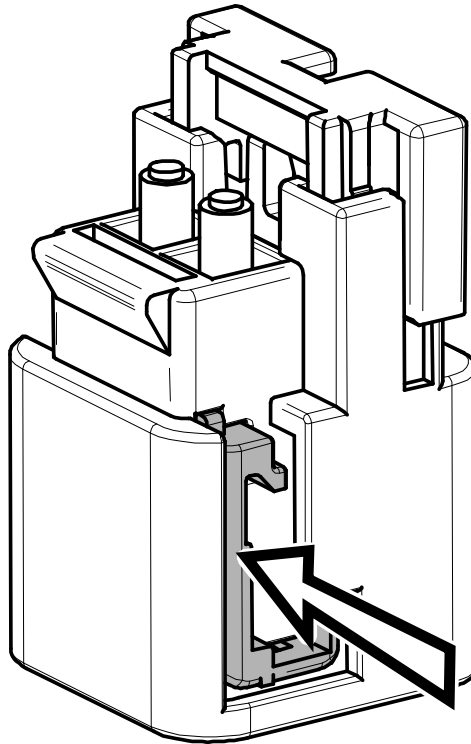


Step F-3 completed.

RECEPTACLE HOUSING 2-WAY

ASSEMBLY

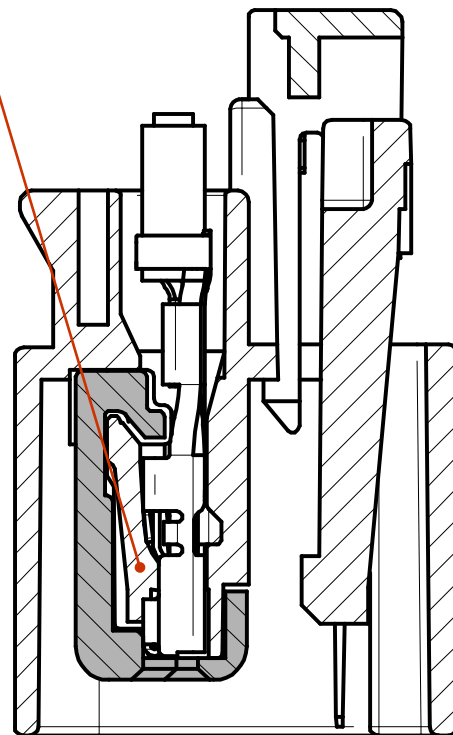
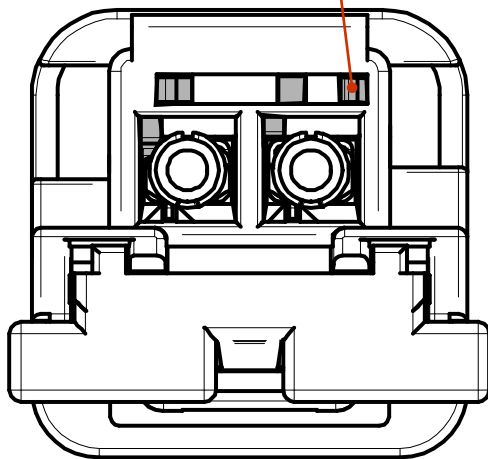
PUSHING SLC



Step F-4: Push the SLC to the end position.

SLC is locked
in end-position-windows

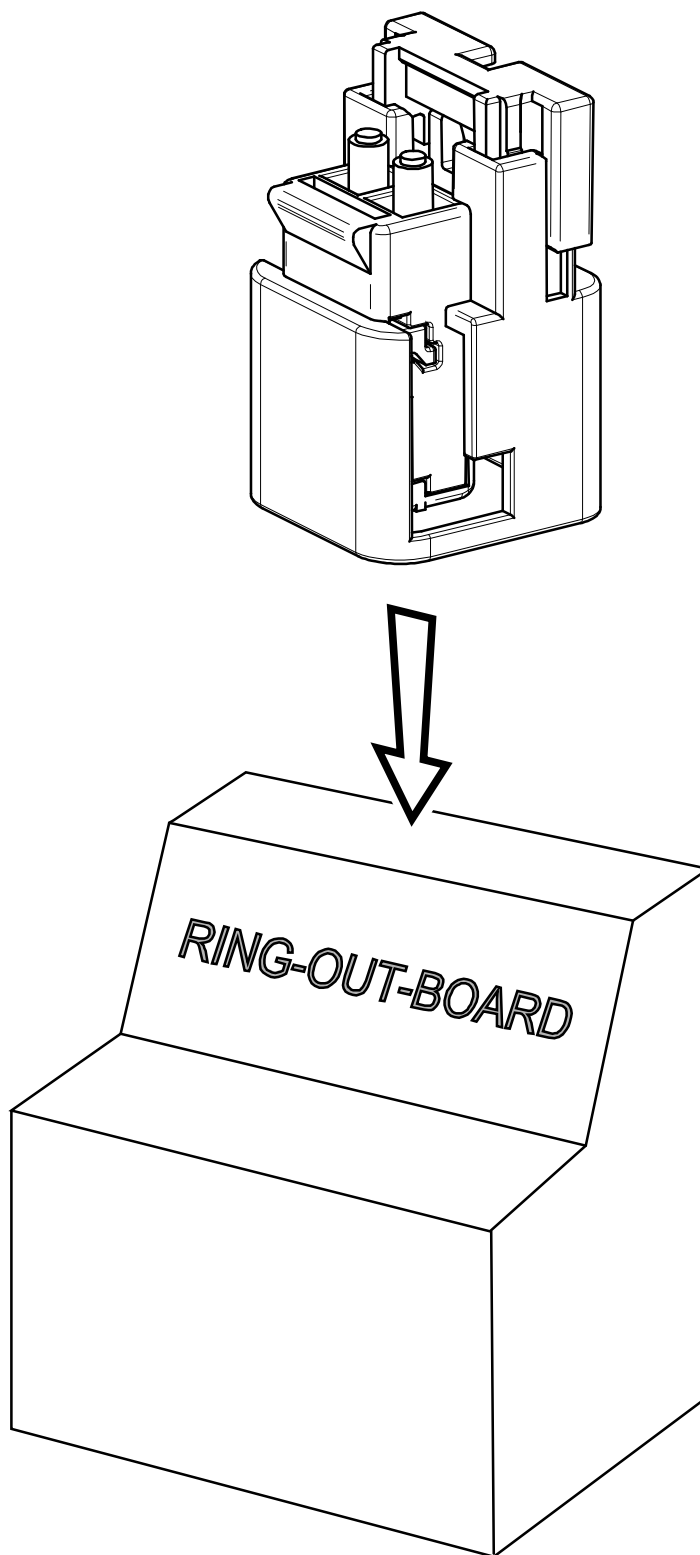
correctly secured
Terminal lock



Step F-4 completed.

RECEPTACLE HOUSING 2-WAY

ELECTRICAL TEST



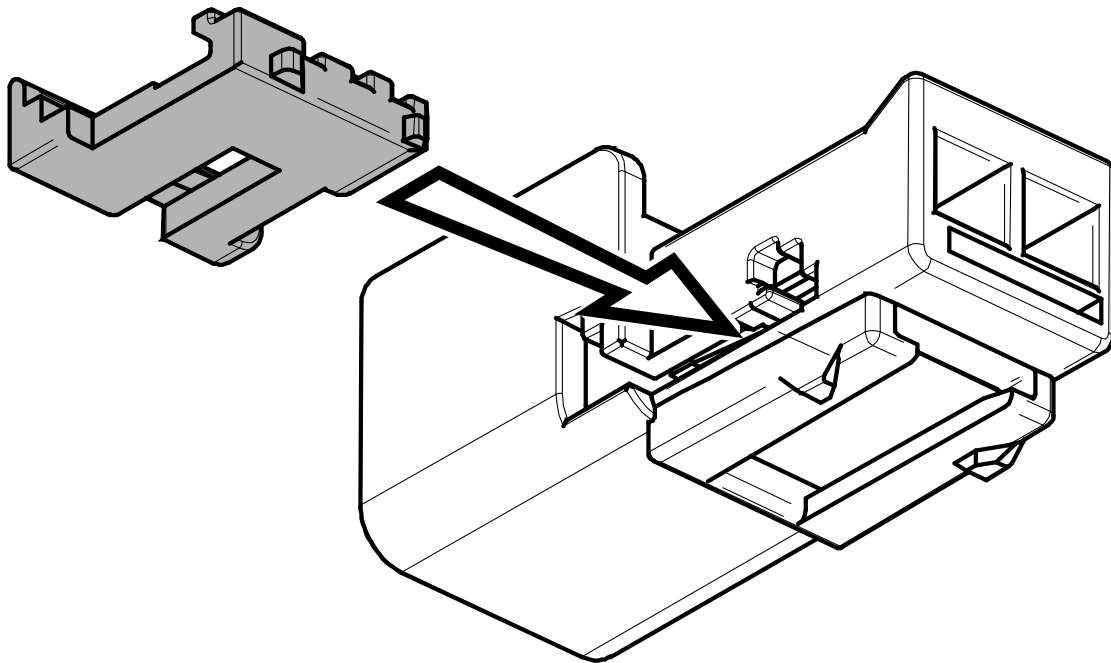
Step F-5 **Perform electrical test. Check assembly and dimensional correctness.**

PRE-ASSEMBLY

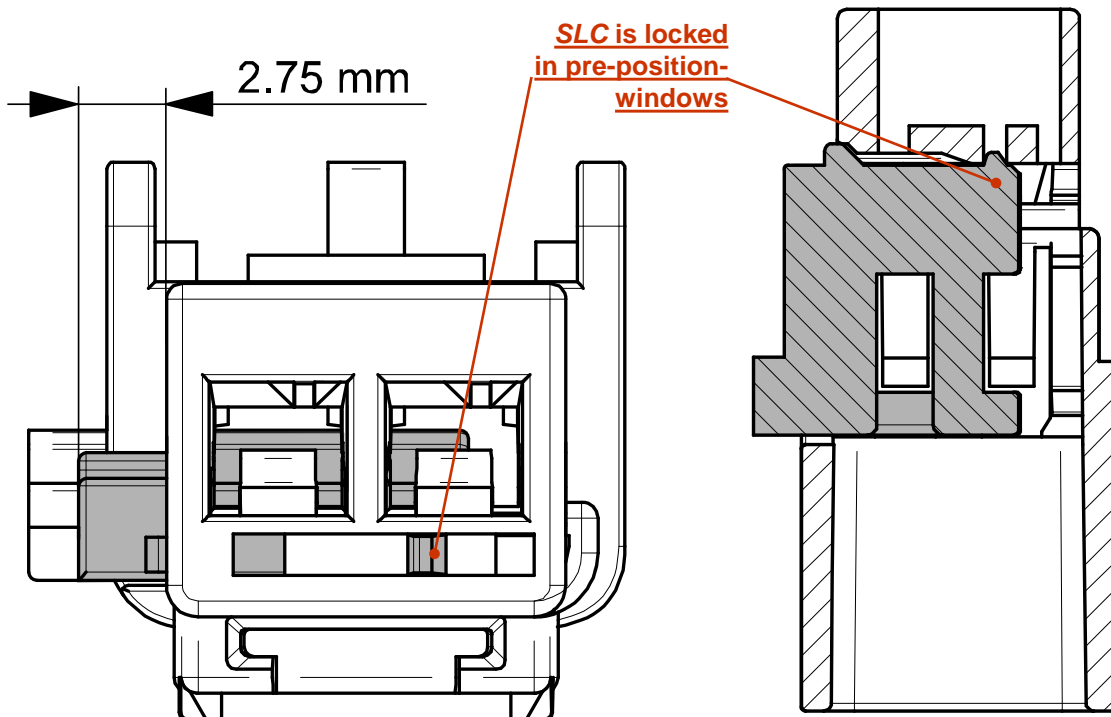
TAB HOUSING 2-WAY

PRE-ASSEMBLY

INSERTING SLC



Step M-1: Using assembly tool (see tool examples on page 24) insert **SLC** until it is correctly closed in pre-position-windows.



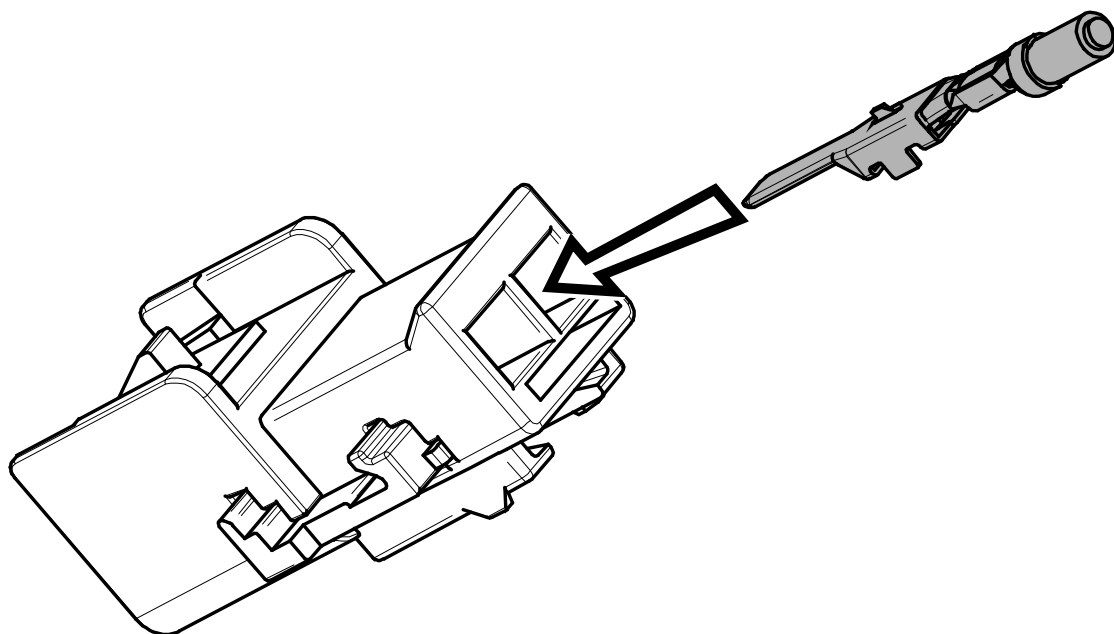
Step M-1 completed.

ASSEMBLY

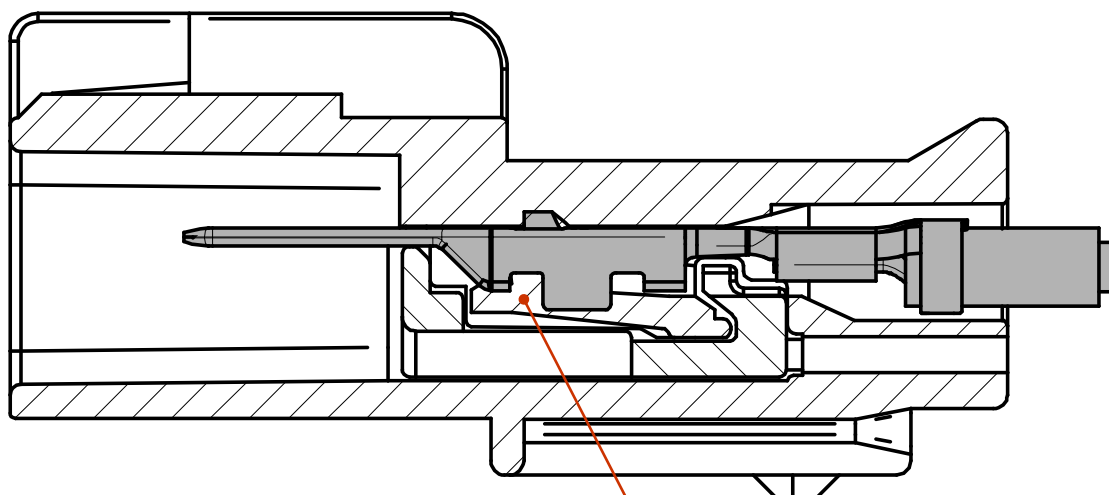
TAB HOUSING 2-WAY

ASSEMBLY

INSERTING GT 280



Step M-2: Insert *GT 280 Male Terminals* into *Tab Housing 2-way* according to the insertion plan. Proper orientation of *Terminal* required.



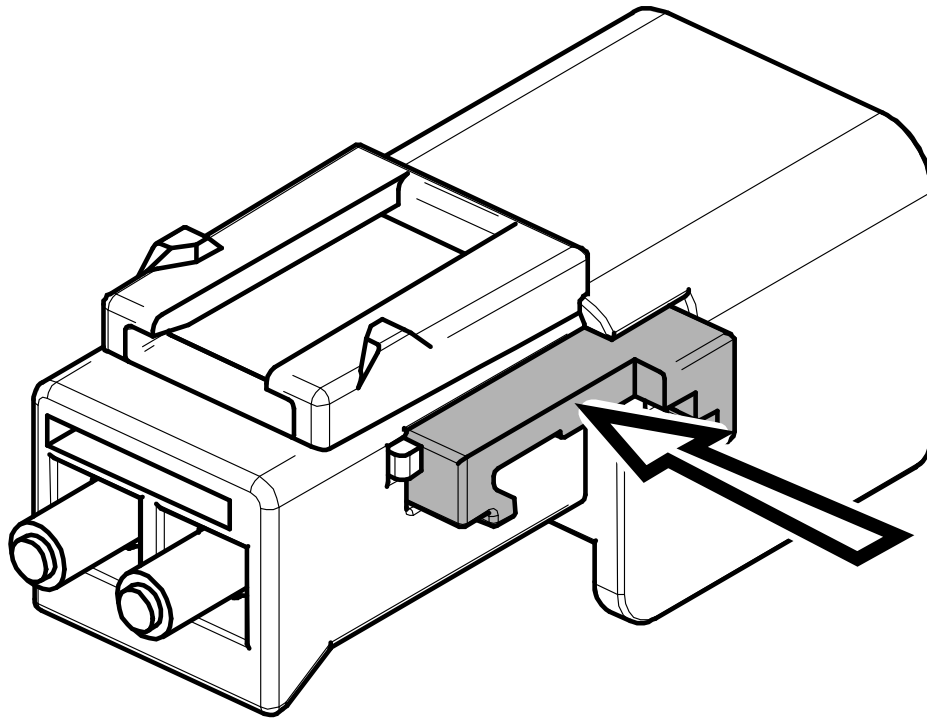
correctly locked *Terminal* under
flex locking arm

Step M-2 completed.

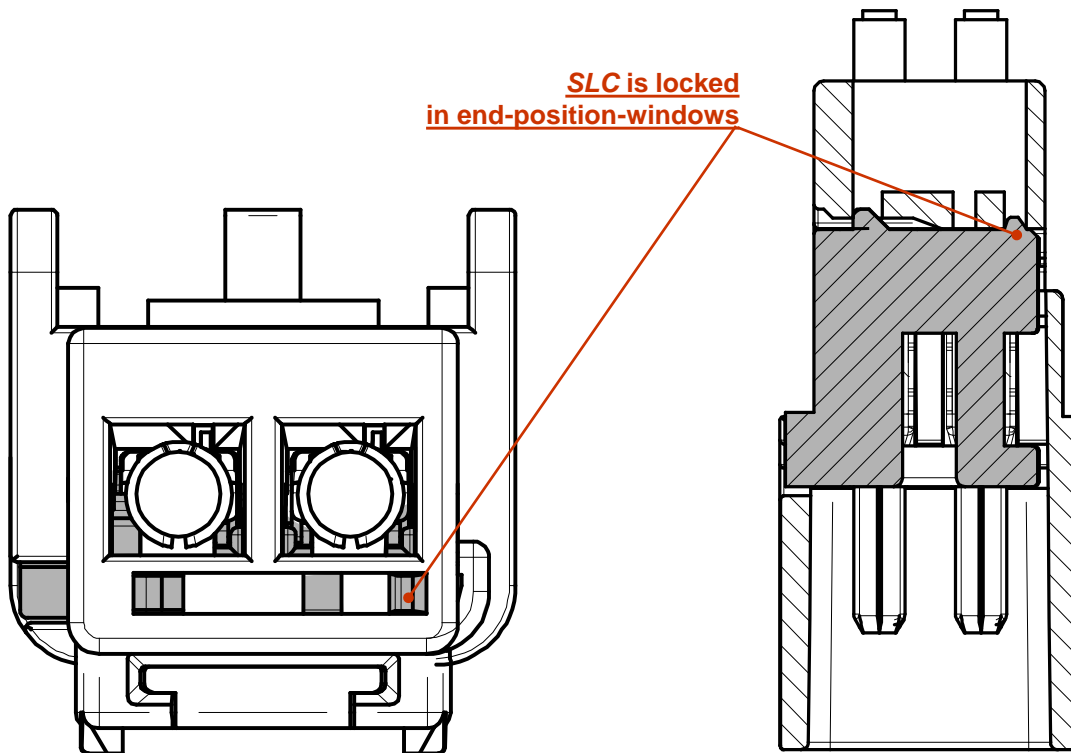
TAB HOUSING 2-WAY

ASSEMBLY

PUSHING SLC



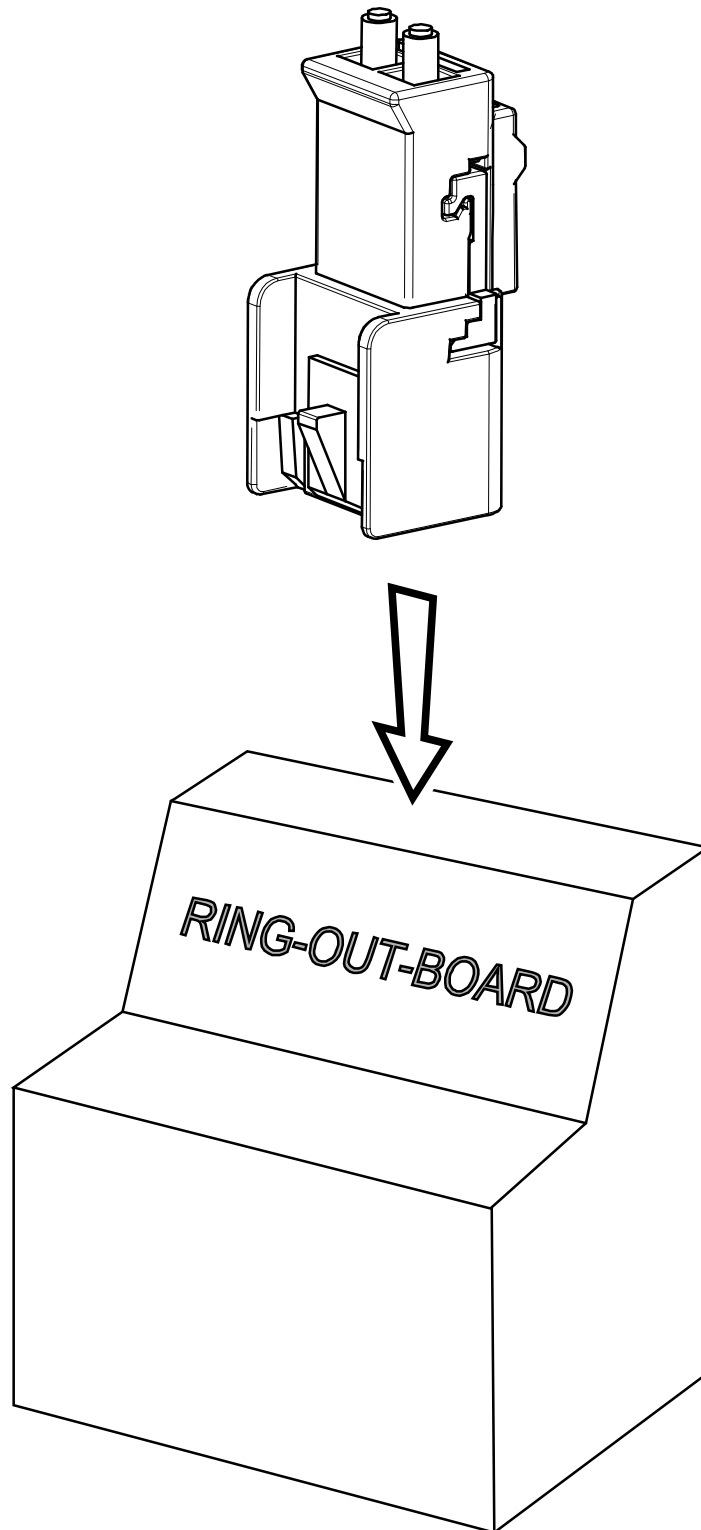
Step M-3: Push the SLC to the end position.



Step M-3 completed.

TAB HOUSING 2-WAY

ELECTRICAL TEST



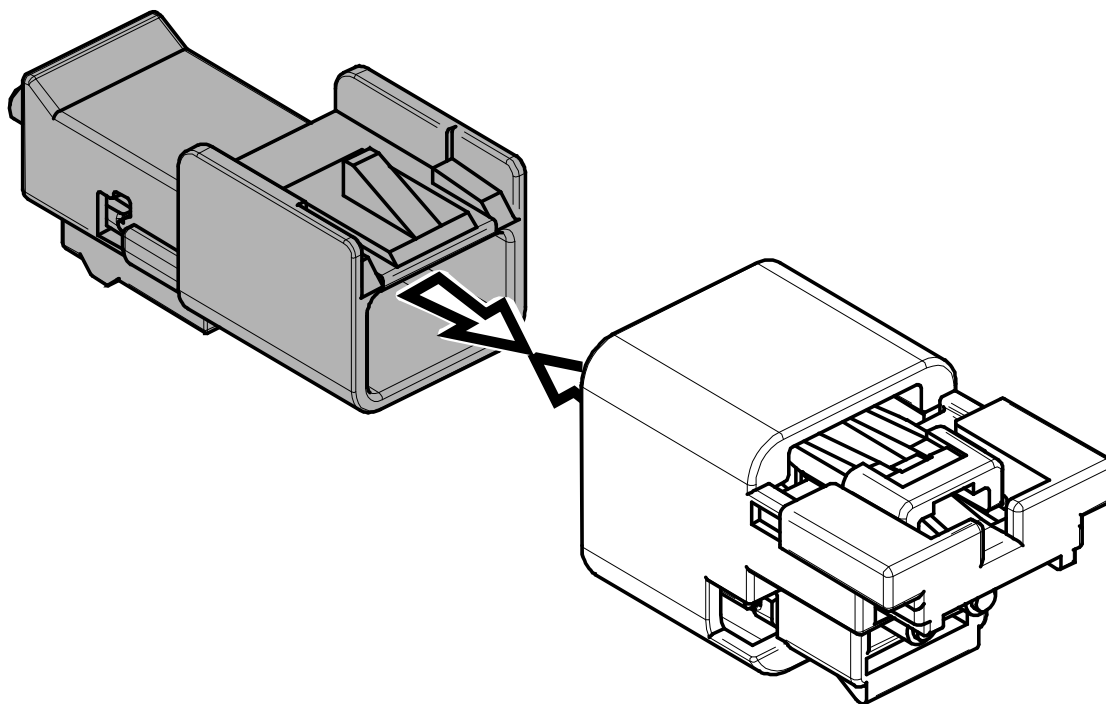
Step M-4 **Perform electrical test. Check assembly and dimensional correctness.**

CONNECTING

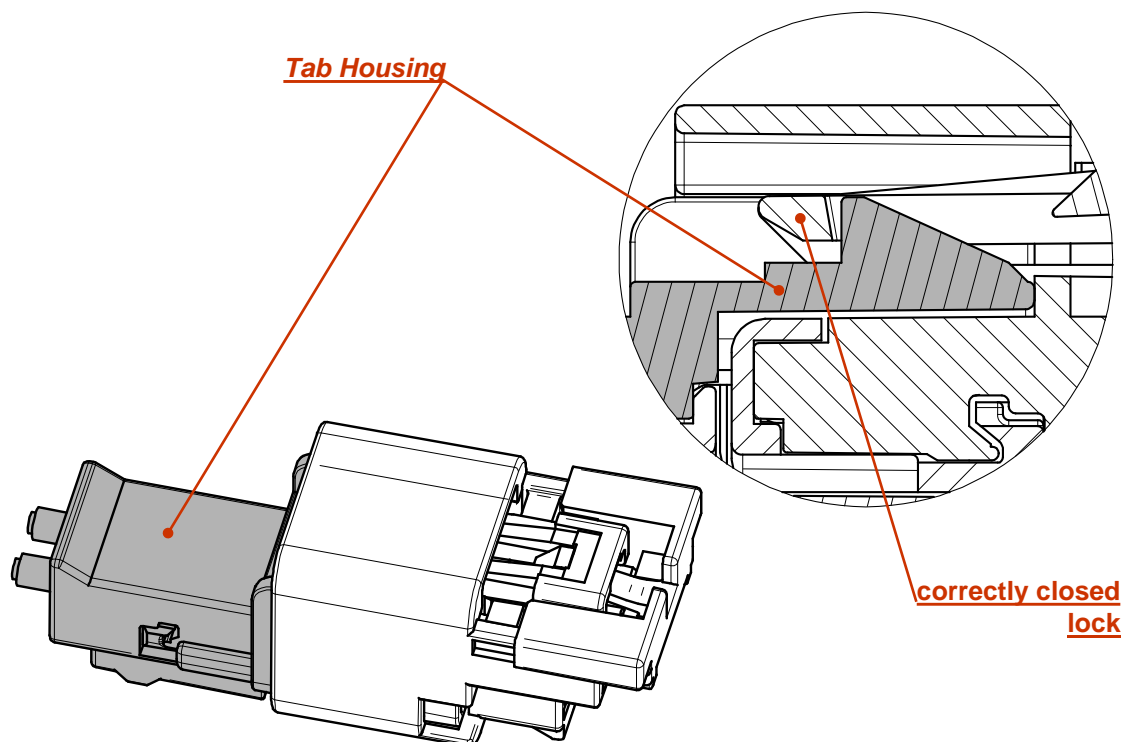
CONNECTORS

VEHICLE ASSEMBLY

CONNECTING CONNECTORS



Step C-1: Connect *Tab Housing 2-way* with *Receptacle Housing 2-way*.

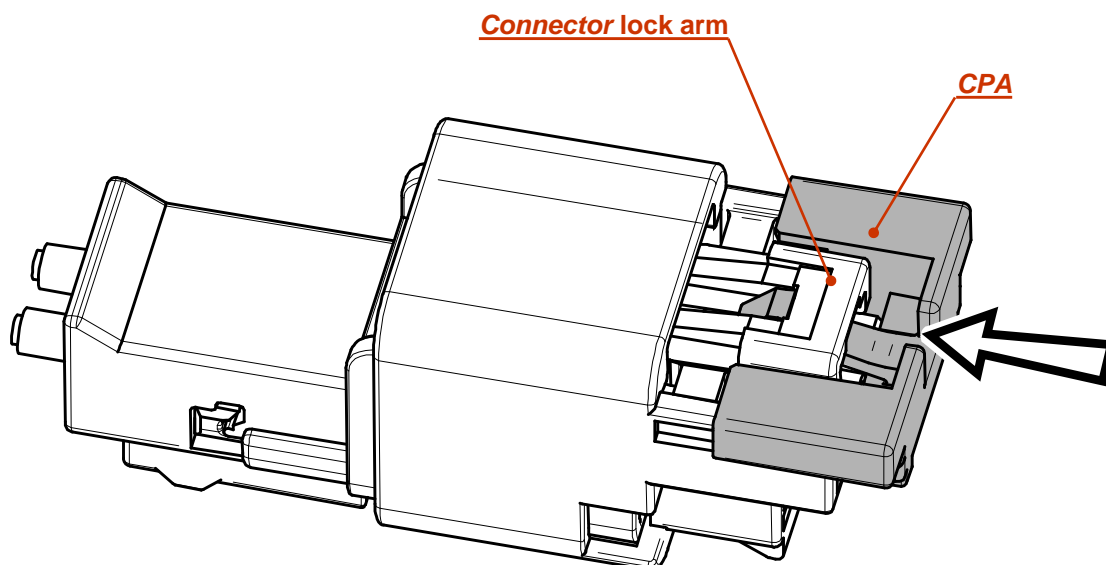


Step C-1 completed.

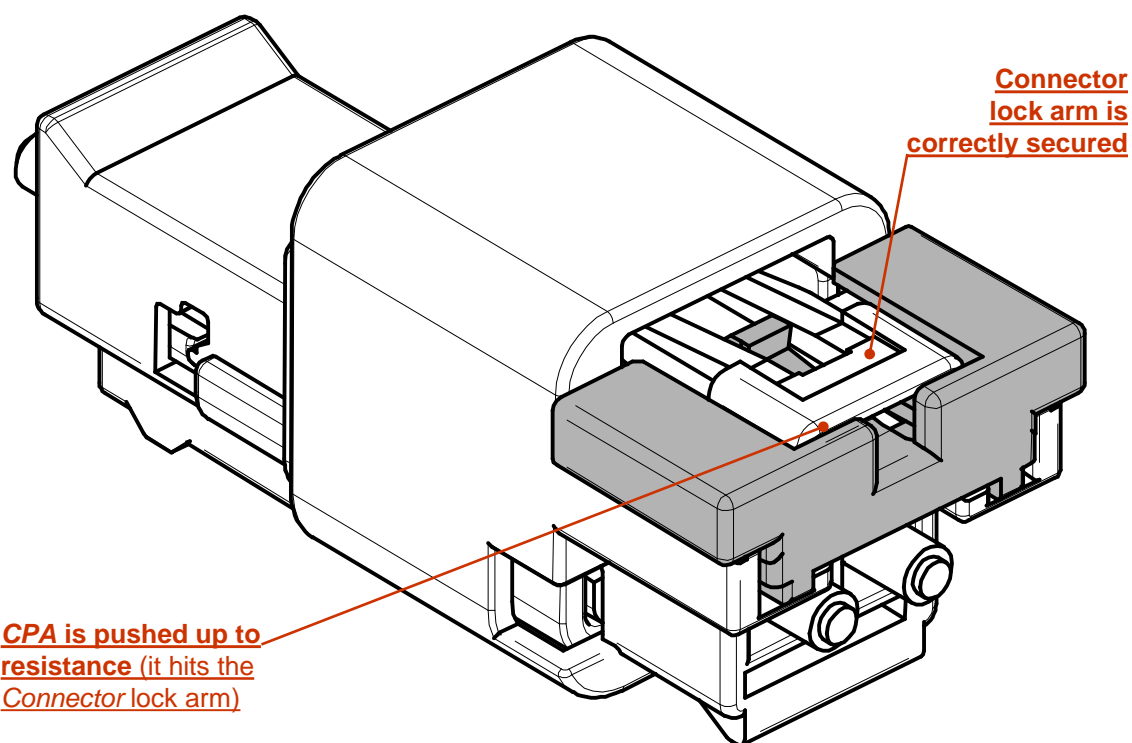
CONNECTORS

VEHICLE ASSEMBLY

LOCKING CPA



Step C-2: Push the CPA to the end position.



Step C-2 completed.

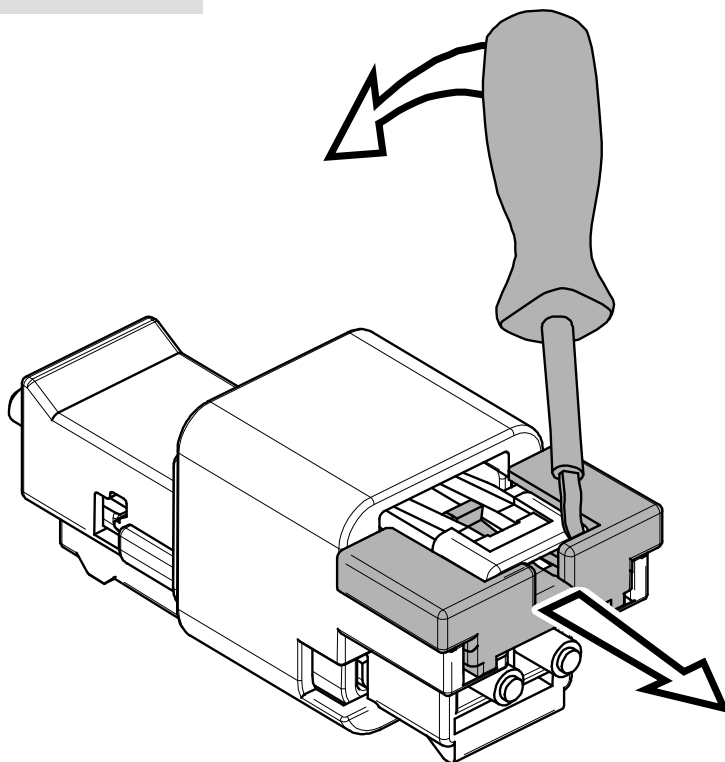
THE END OF ASSEMBLY / CONNECTING SEQUENCE

Disassembly D Sequence

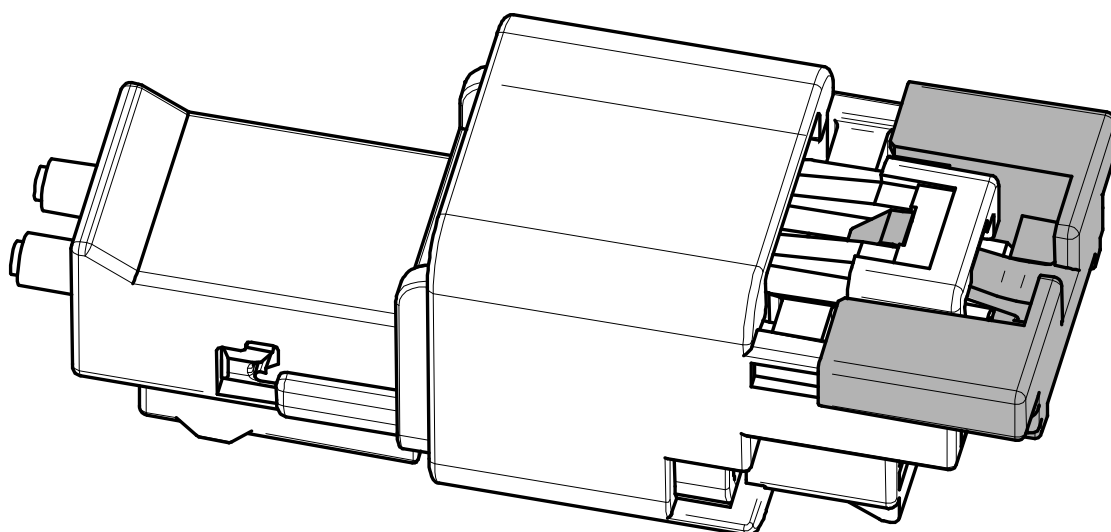
DISCONNECTING

CONNECTORS

UNLOCKING CPA



Step D-1: Move the CPA to its pre-assembled position using removal tool 10804886.



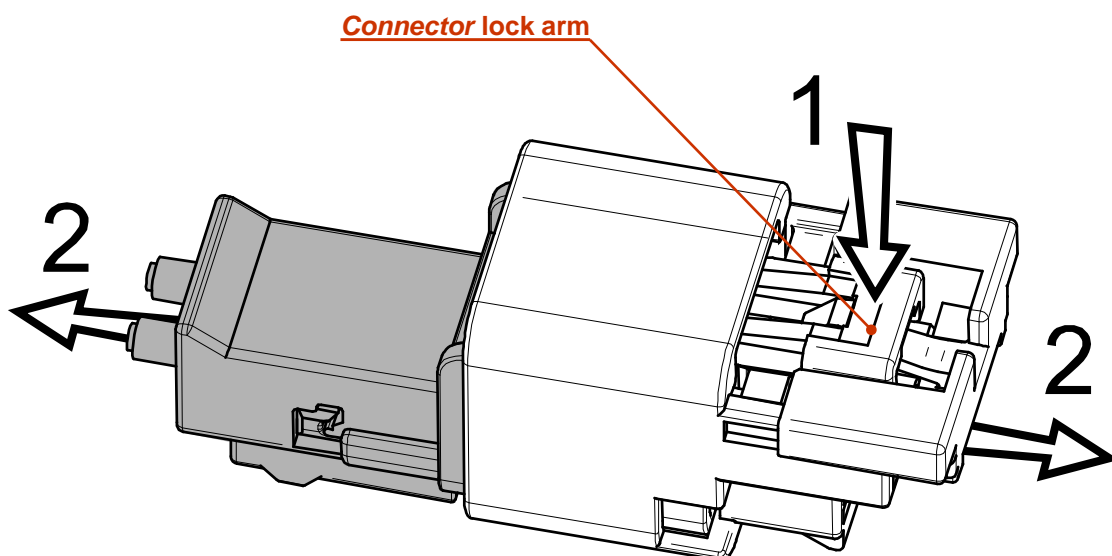
Step D-1 completed.

D
I
S
A
S
S
E
M
B
L
Y

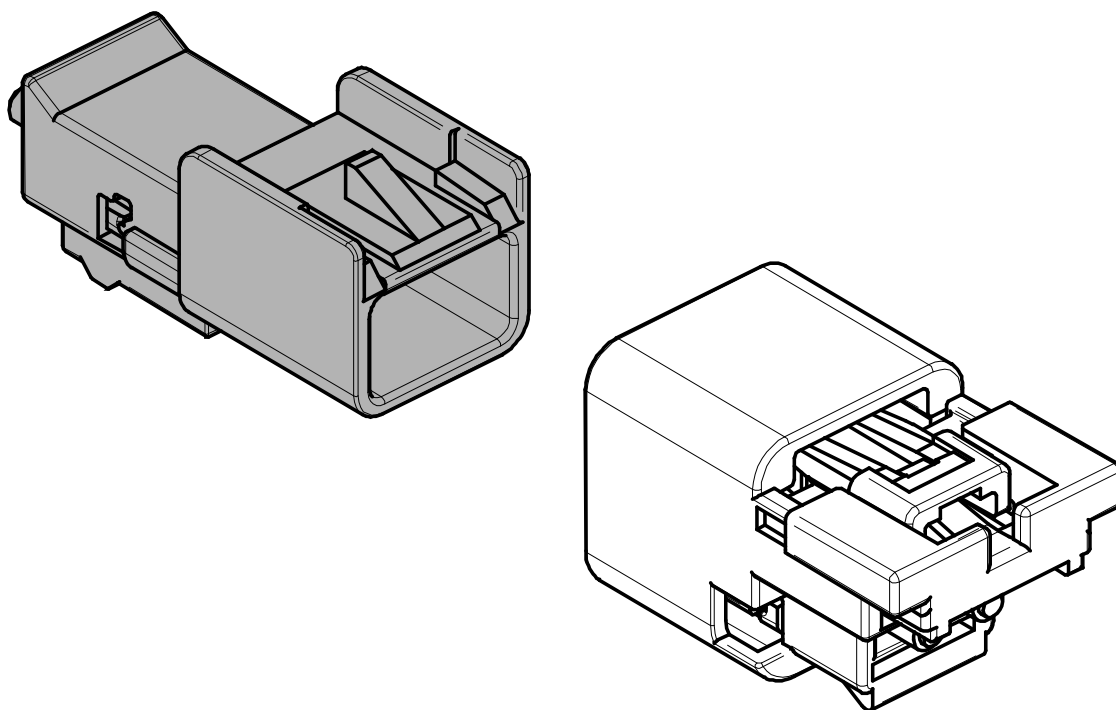
CONNECTORS

DISCONNECTING CONNECTORS

D
I
S
A
S
S
E
M
B
L
Y



Step D-2: Push (arrow 1) locking hinge and still pushing disconnect (arrow 2) *Male and Female Connector*.

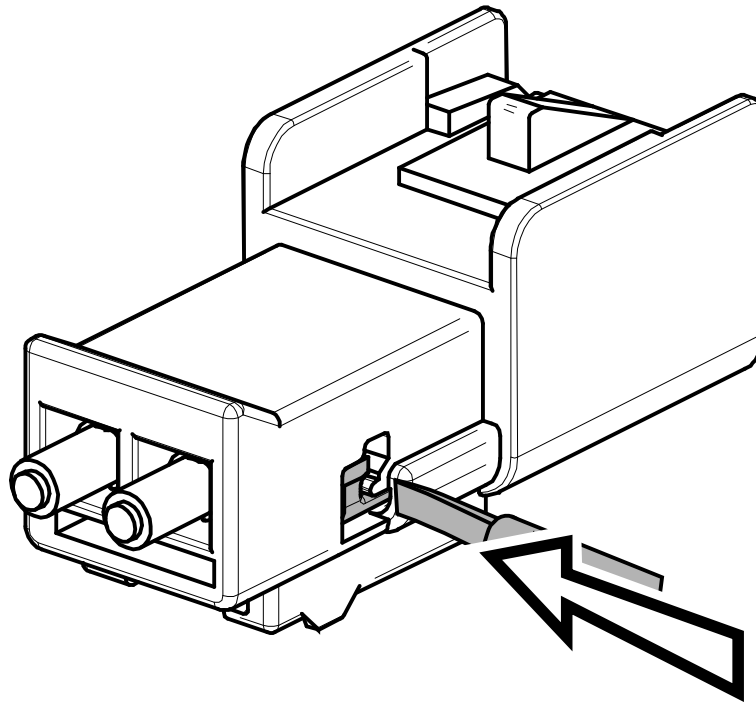


Step D-2 completed.

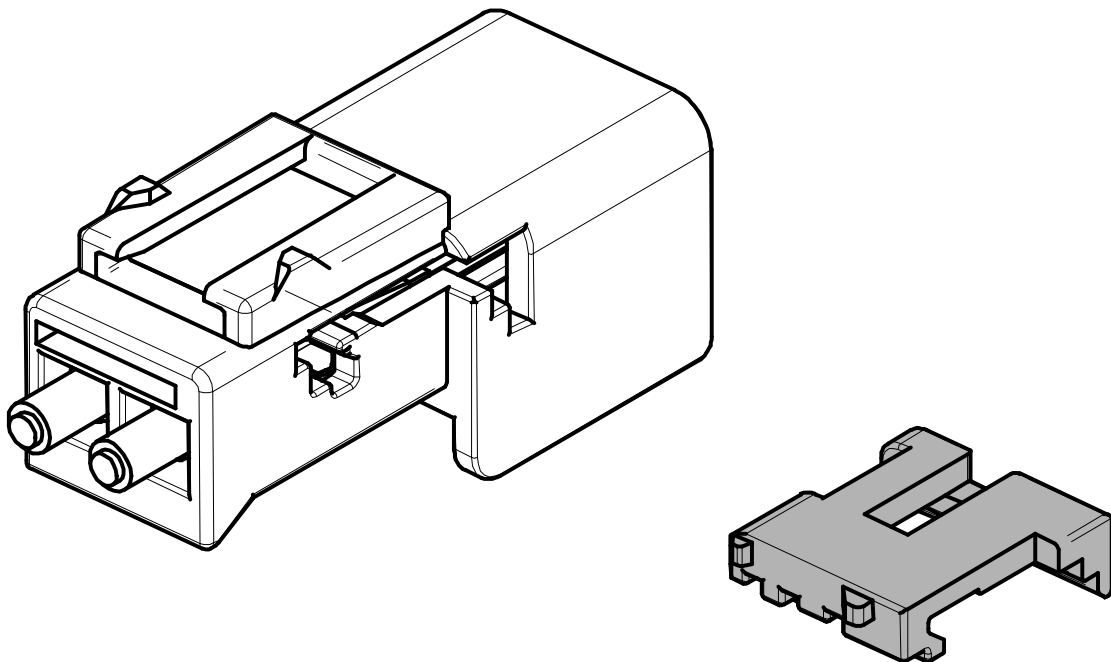
MALE DISASSEMBLY

TAB HOUSING 2-WAY

REMOVING SLC



Step D-3: Remove the SLC completely using removal tool 10804886.

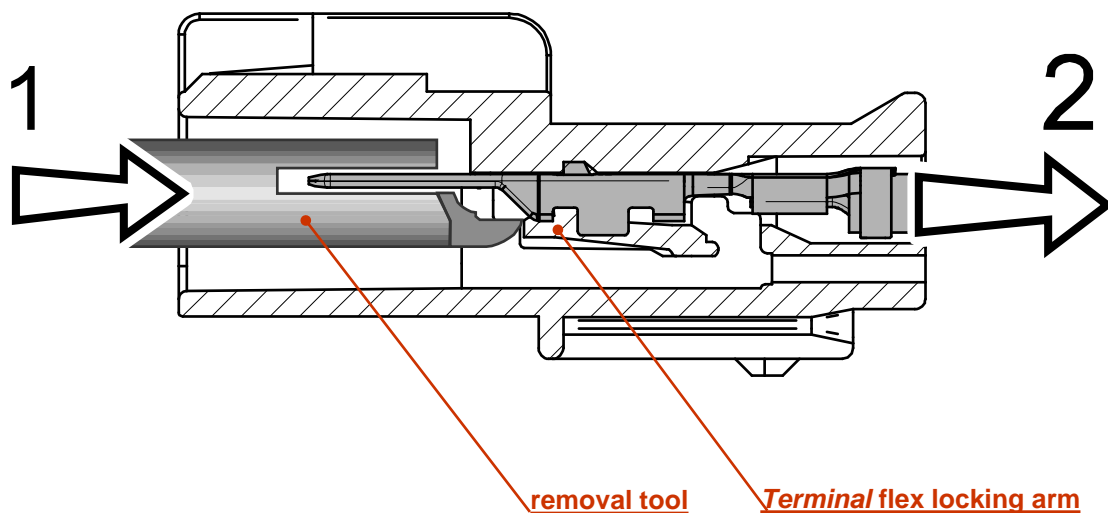


Step D-3 completed.

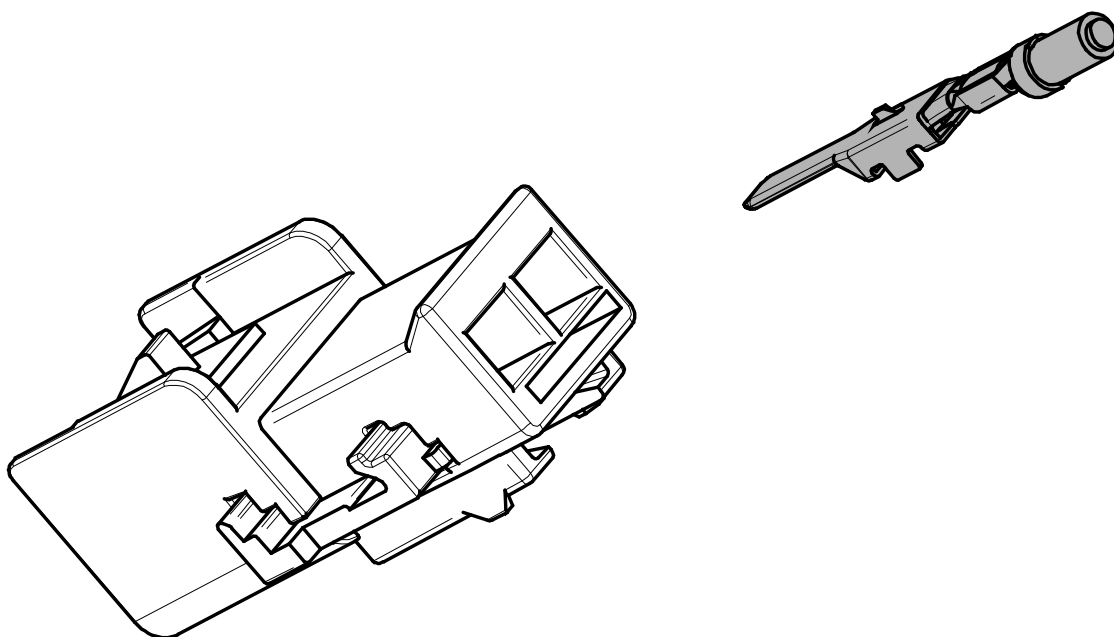
D
I
S
A
S
S
E
M
B
L
Y

TAB HOUSING 2-WAY

REMOVING GT 280



Step D-4: Locate locking arm at the front of the cavity. Insert (operation 1) the tool NO. **10714738** straight into the channel of cavity, deflect the locking arm to unseat the *Terminal* and gently pull on the cable to remove (operation 2) **GT 280 Male Terminal** from the **Tab Housing 2-way**.



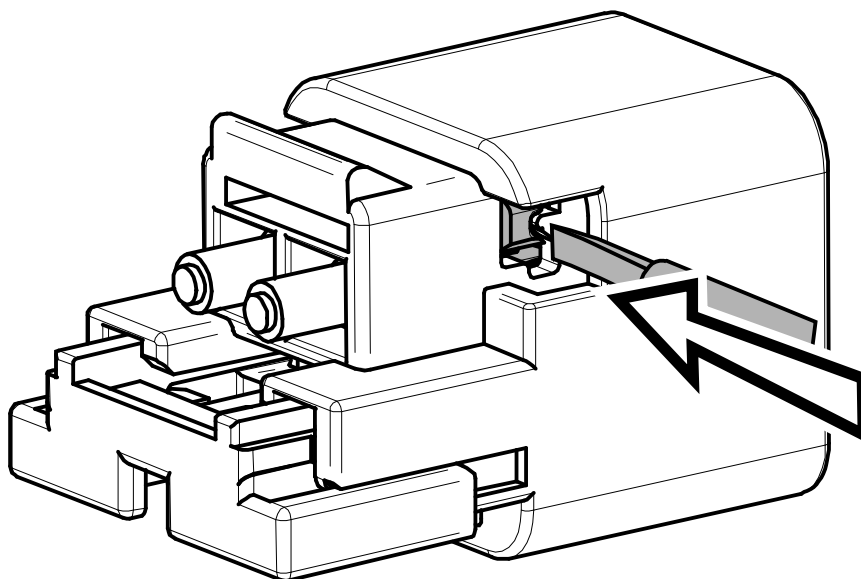
Step D-4 completed.

D
I
S
A
S
S
E
M
B
L
Y

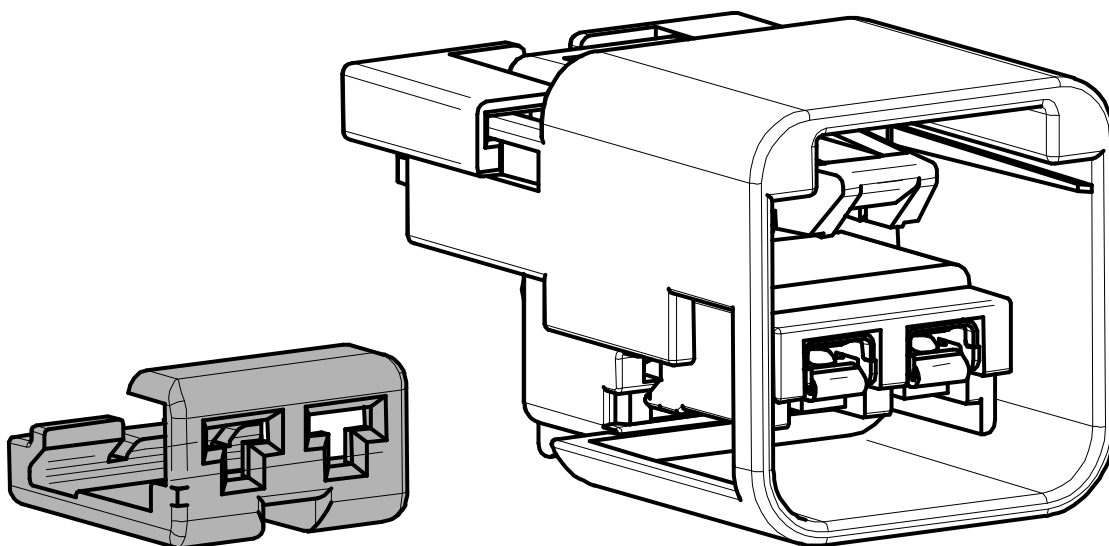
FEMALE DISASSEMBLY

RECEPTACLE HOUSING 2-WAY

REMOVING SLC



Step D-5: Remove the SLC completely using removal tool 10804886.

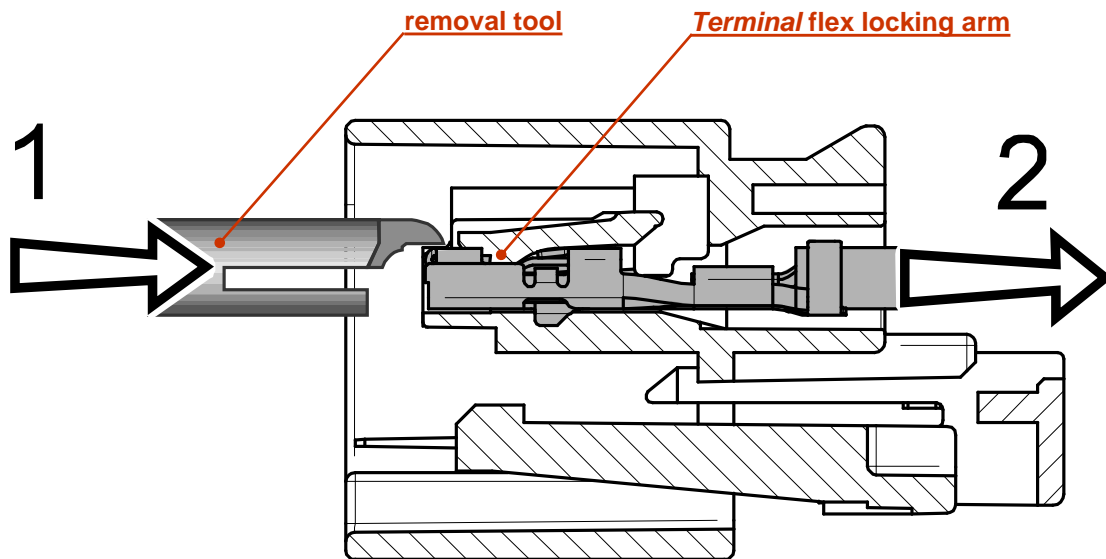


Step D-5 completed.

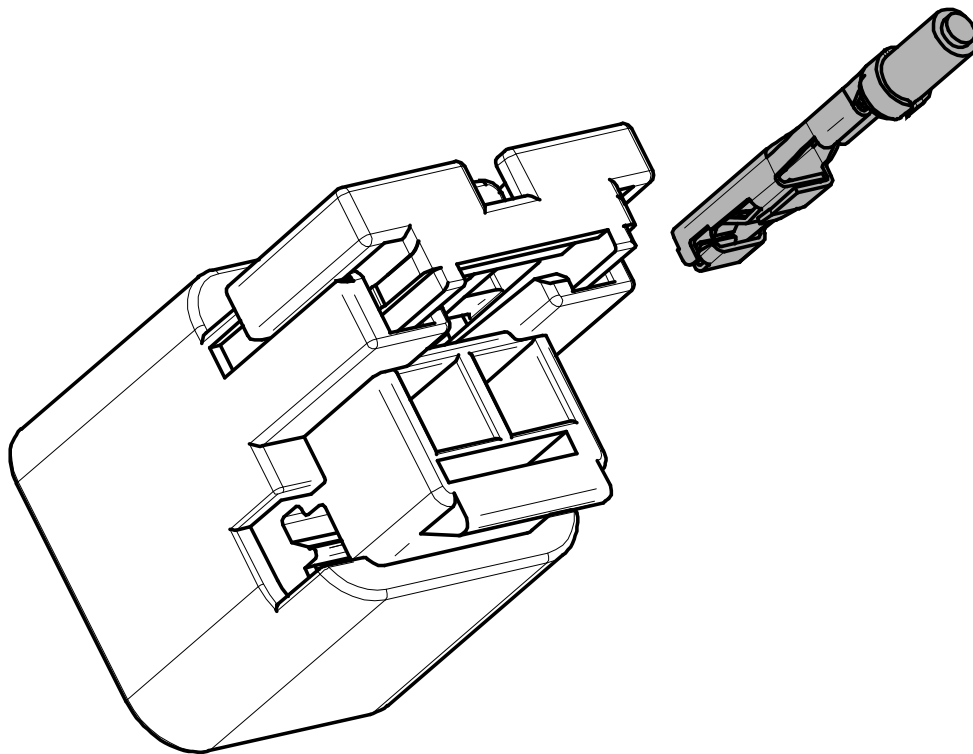
D
I
S
A
S
S
E
M
B
L
Y

RECEPTACLE HOUSING 2-WAY

REMOVING GT 280



Step D-6: Locate locking arm at the front of the cavity. Insert (operation 1) the tool NO. 10714738 straight into the channel of cavity, deflect the locking arm to unseat the *Terminal* and gently pull on the cable to remove (operation 2) *GT 280 Female Terminal* from the *Receptacle Housing 2-way*.

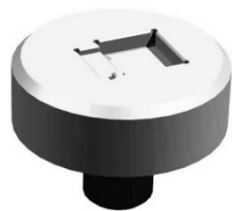


Step D-6 completed.

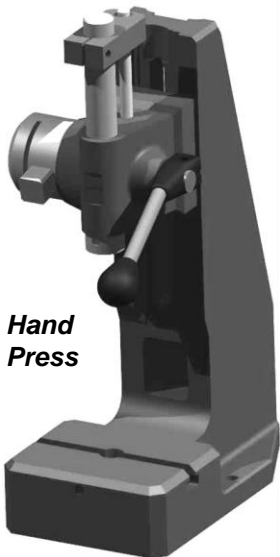
THE END OF ASSEMBLY / DISASSEMBLY INSTRUCTIONS

TABLE OF TOOLS

EXAMPLES OF ASSEMBLY TOOLS

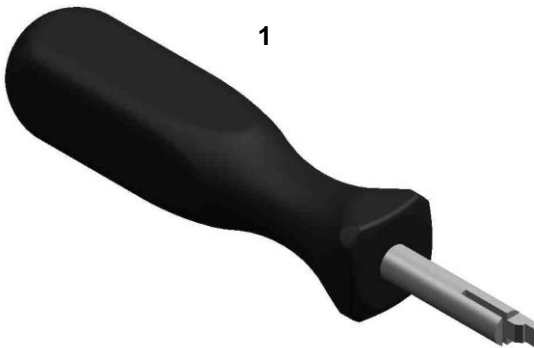


Example assembly tool for **SLC** pre-assembly in **2-way Connector GT 280** (unsealed)

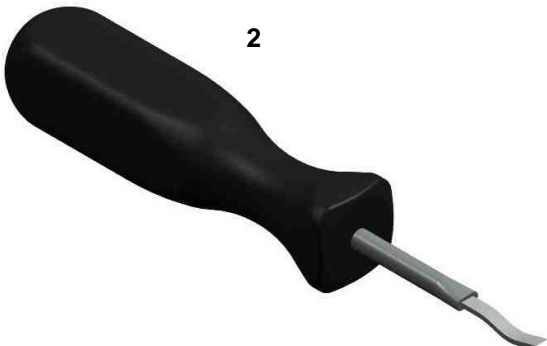


Hand Press

HELP TOOLS



1



2

Item	Function	Tool PN.
1	Removal tool for GT 280 Male and Female Terminals	10714738
2	Removal tool for CPA removal	10804886
3	Alternative removal tool for GT 280 Male and Female Terminals	12094429

REVISIONS

Revision	Change description	Date
REV 01	Initial release	Feb 3, 2004
REV 02	New removal tools for PLR, TPA and CPA applied	Sep 5, 2005
REV 03	E-catalog version created	Jan 20, 2012
REV 04	Added PNs for version without CPA.	May 15, 2013

DEV: TCK KR PL