

Product Data Sheet

DIN 41612 straight spring-loaded connector, Type C,
Part No. 304-40064-01

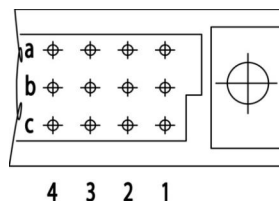
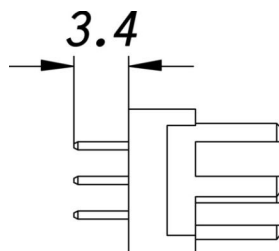


Illustration similar



Parallel



Perpendicular



Through Hole



Rugged

- Connector length: 3.4 mm
- Number of poles: 96
- Soldering Techniques
- Grade 2



» to product on www.ept.de



» to product group DIN 41612

Product Data Sheet

DIN 41612 straight spring-loaded connector, Type C,
Part No. 304-40064-01



Technical Specifications

Basics

Specification	IEC 60603-2 (DIN 41612)
Performance Level	2
No. of Contacts	96
Termination Technology	Soldering Techniques
Termination Length	3.4 mm
Board-to-Board Distance	16.85 mm
Operating Temperature Range	-55°C to +125°C

Material

Insulator Material	Glass-fiber-reinforced PBT, UL 94 V-0
CTI value <i>IEC 60112</i>	200
Contact Material	copper alloy

Mechanical

Pitch	2.54 mm
Mating Force	90 N
Separating Force per Pin	> 0.15 N
Durability	400 insertion cycles

Electrical

Operational Current	2.6 A
Contact Resistance	20 mΩ
Clearance and Creepage	≥ 1.2 mm
Insulation Resistance	> 10 ⁶ MΩ
Test Voltage	1000 V

Processing

Soldering Temperature	up to 260°C
-----------------------	-------------

Approval / Compliance

UL file	E130314
Environment	RoHS compliant

Product Data Sheet

DIN 41612 straight spring-loaded connector, Type C,
Part No. 304-40064-01



Derating Diagram

Product Data Sheet

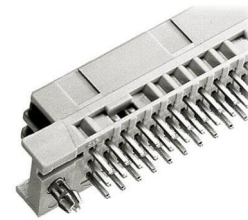
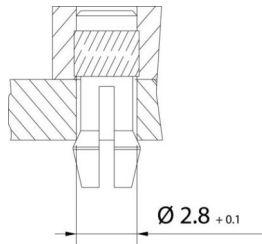
DIN 41612 straight spring-loaded connector, Type C,
Part No. 304-40064-01



Options

Board Lock

Suitable for connectors with type B, C, D, E, F low profile, G low profile, M female connectors and R male connectors



	Forces			Part Number	PCB Thickness
	Type of Insertion	F_m			
Type of Insertion	F_m	not soldered F_h	soldered F_h	304-40064-01C1	1.6 mm
Locked	< 20 N	> 10 N	> 25 N	304-40064-01C2	2.4 mm
Under Tension	< 20 N	> 5 N	> 25 N	304-40064-01C3	3.6 mm

Modifications

Available on request

- without mounting flange
- Special lengths for connections
- Grade I + III or custom
- Special configuration

Accessories

» DIN 41612 Kodierung Bauform B und C
Artikelnummer 104-19003

Product Data Sheet

DIN 41612 straight spring-loaded connector, Type C,
Part No. 304-40064-01



Drawings

Component data in 2D and 3D format you can download here:

[» PDF](#)

[» 3D IGES](#)

[» 3D STEP](#)

[» 3D PDF](#)