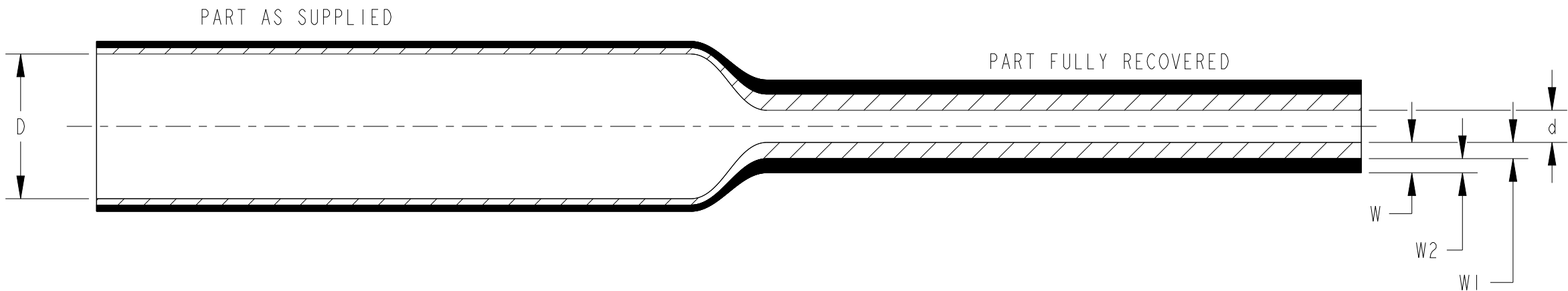
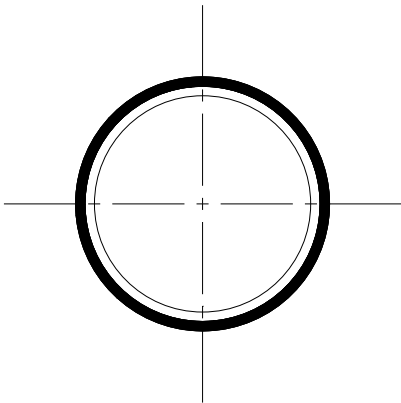


P	LTR	DESCRIPTION	DATE	DWN	APVD
	A	INITIAL RELEASE	11APR2023	BDA	MB

THERMOFIT ES1000 TUBING
POLYOLEFIN, SEMI-RIGID, ADHESIVE-LINED TUBING
DUAL WALL, ELECTRICALLY INSULATING, EXTRUDED TUBING



PRODUCT DIMENSIONS

PART NUMBER	AS SUPPLIED		AS RECOVERED							
	MINIMUM EXPANDED I.D. INCLUDING CORE (D)		MAXIMUM RECOVERED I.D. INCLUDING CORE (d)		MINIMUM RECOVERED JACKET WALL (W2)		MINIMUM RECOVERED ADHESIVE WALL (W1)		MINIMUM RECOVERED TOTAL WALL (W)	
	mm.	in.	mm.	in.	mm.	in.	mm.	in.	mm.	in.
ES1000-1	5.72	0.225	1.27	0.050	0.64	0.025	0.56	0.022	1.20	0.047
ES1000-2	7.44	0.293	1.65	0.065	0.76	0.030	0.76	0.030	1.52	0.060
ES1000-3	10.85	0.427	2.41	0.095	0.89	0.035	1.02	0.040	1.91	0.075
ES1000-4	17.78	0.700	4.45	0.175	1.04	0.041	1.37	0.054	2.41	0.095

PRODUCT INFORMATION

SHRINK RATIO:4:1

COLOR

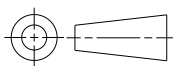
JACKET-CLEAR
ADHESIVE LINER-AMBER

TUBING CUT TO SPECIFIC LENGTHS CAN BE SUPPLIED FROM THE PRODUCT SIZES REFERENCED WITHIN THIS DRAWING

STANDARD CUTTING TOLERANCES(mm)	
CUT LENGTH	TOLERANCE
UPTO TO 9.90mm	±1.50mm
10mm TO 24.90mm	±1.50mm
25mm TO 54.90mm	±1.50mm
55mm TO 99.90mm	±3.00mm
100mm TO 149.90mm	±4.00mm
150mm TO 499.90mm	±5.00mm
500mm AND GREATER	±25.40mm

THIS DRAWING IS A CONTROLLED DOCUMENT.

DIMENSIONS:
mm(Inches)



MATERIAL
SEE NOTE

TOLERANCES UNLESS OTHERWISE SPECIFIED:

0 PLC ±.1
1 PLC ±0.1
2 PLC ±0.01
3 PLC ±0.001
4 PLC ±0.0001
ANGLES ±.1

FINISH

-

-

DWN 11APR2023

BASAVARAJA D A

CHK 11APR2023

SELVAPANDIAN B

APVD 11APR2023

MAYO BAKARE

PRODUCT SPEC

RT-1113

APPLICATION SPEC

-

WEIGHT

-

CUSTOMER DRAWING



TE Connectivity

NAME
THERMOFIT ES1000 TUBING
POLYOLEFIN, SEMI-RIGID, ADHESIVE-LINED TUBING

SIZE	CAGE CODE	DRAWING NO	RESTRICTED TO
A3	-	ES1000	-

SCALE NTS SHEET 1 OF 1 REV A