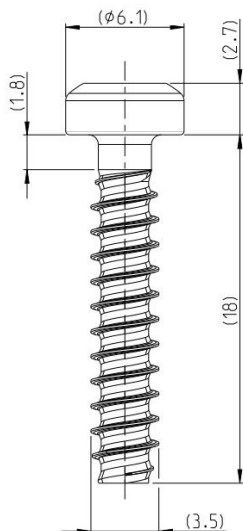
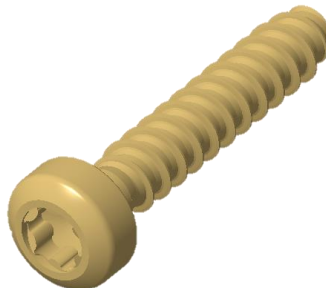
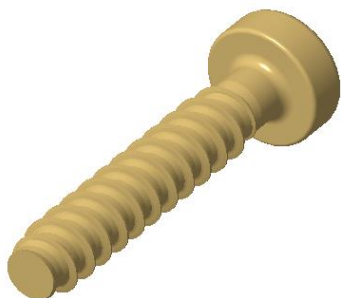


TE CONNECTIVITY

Transportation Solutions

Screws

2236640-1



Screw Details

Screw Size	M3.5X18
TE Part Number	2236640-1
TE Description	SCREW,35X18,SLOTTED,ROUND HEAD
Screw Type	Self Tapping Screw
Material	Steel
Application	Automotive Charger Inlets

te.com

TE Connectivity, TE, TE Connectivity (logo) and Every Connection Counts are trademarks. All other logos, products and/or company names referred to herein might be trademarks of their respective owners.

The information given herein, including drawings, illustrations and schematics which are intended for illustration purposes only, is believed to be reliable. However, TE Connectivity makes no warranties as to its accuracy or completeness and disclaims any liability in connection with its use. TE Connectivity's obligations shall only be as set forth in TE Connectivity's Standard Terms and Conditions of Sale for this product and in no case will TE Connectivity be liable for any incidental, indirect or consequential damages arising out of the sale, resale, use or misuse of the product. Users of TE Connectivity products should make their own evaluation to determine the suitability of each such product for the specific application.

© 2023 TE Connectivity. All Rights Reserved.