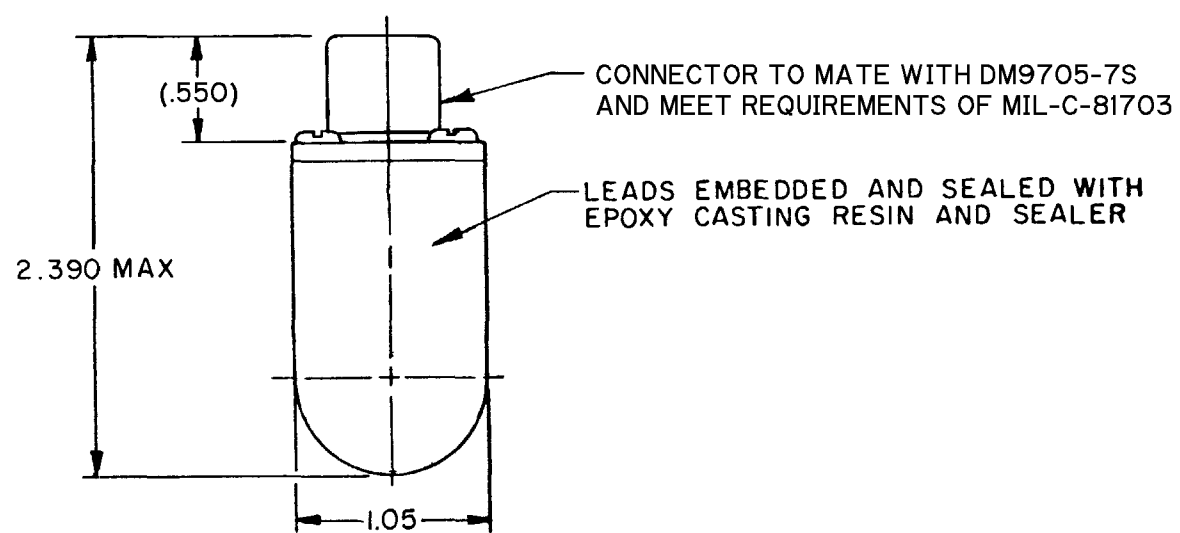
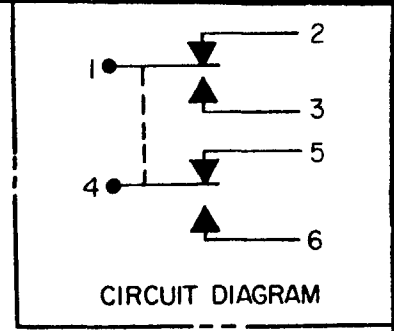
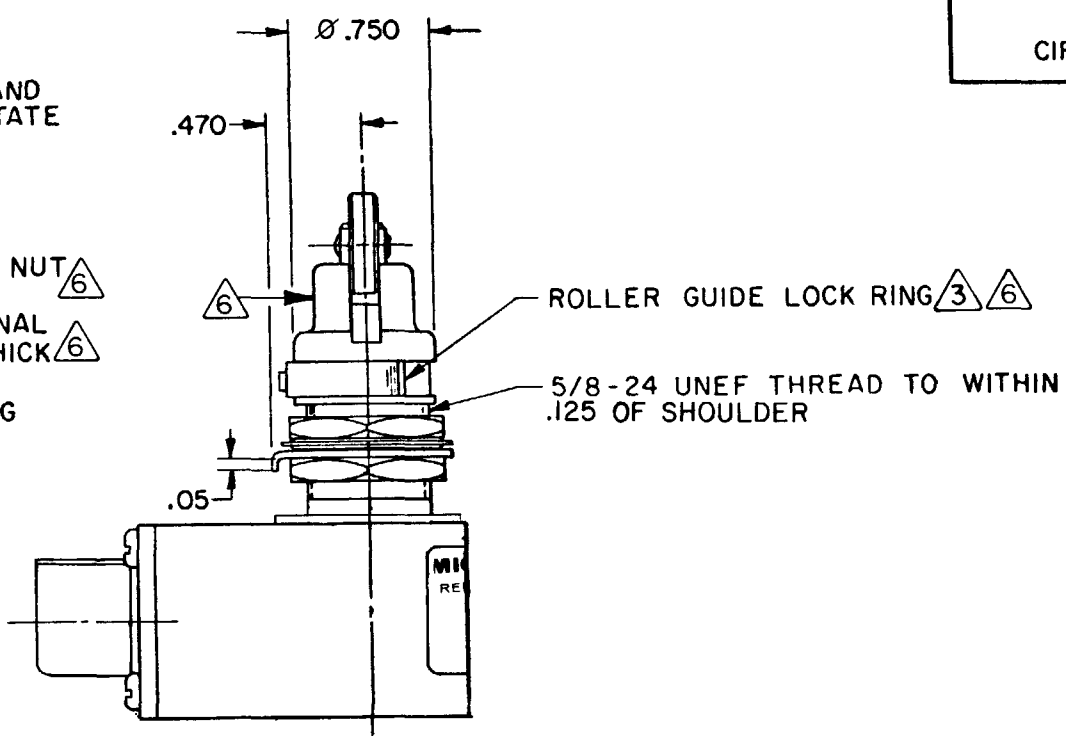
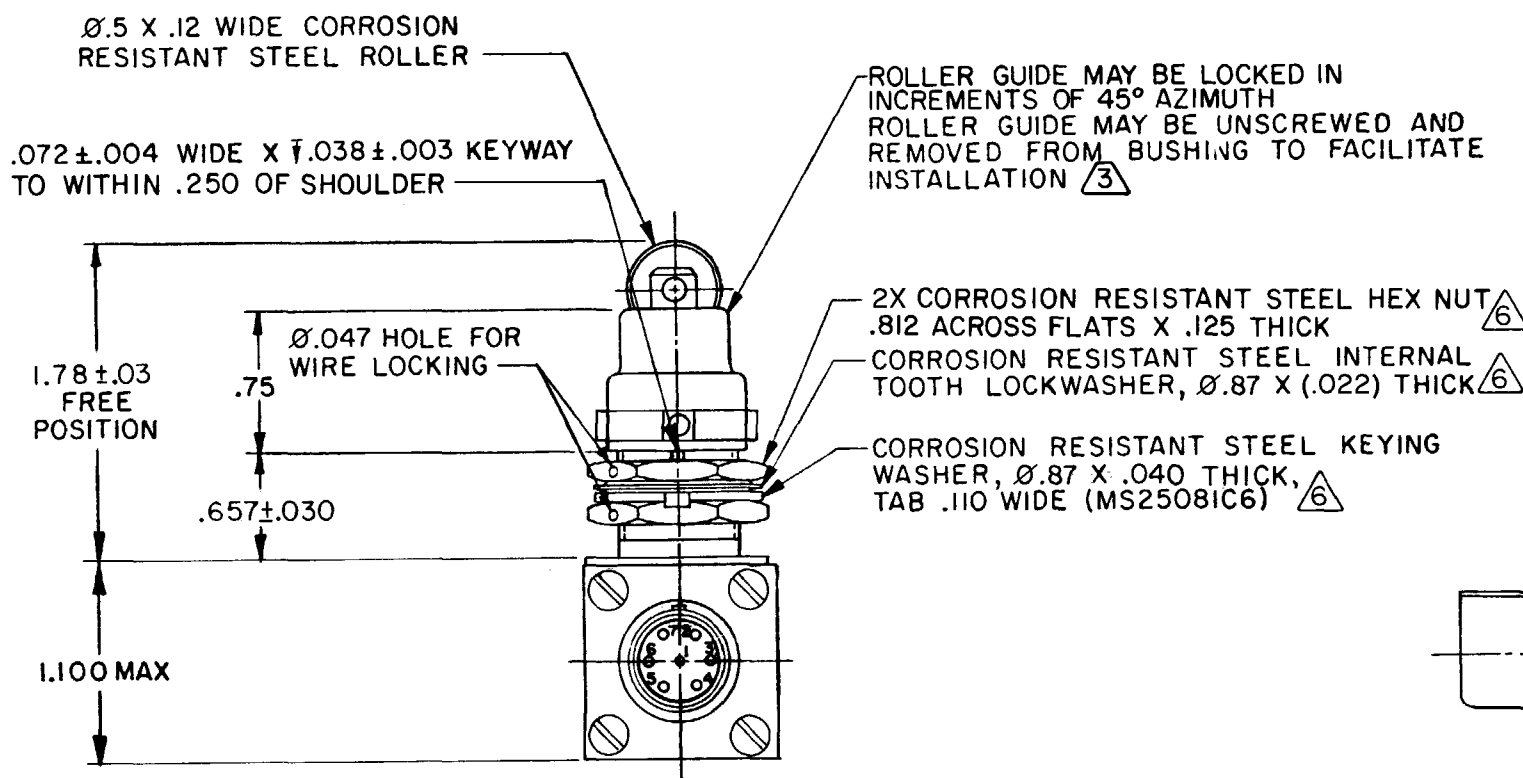


CATALOG LISTING  
21EN31-R  
PAGE 1 OF 1  
REPLACES  
RELEASE NO.  
CHECK  
REVISIONS  
A CO 44351  
WJM 18 SEP 79  
B CO47573 PART 4  
RJM 8 AUG 80  
C CO47968  
J A P 29 OCT 80  
D CO59459  
WJK 27 AUG 86  
E CO-82809A  
J A K 31 JUL 96  
F CO84717  
J A K 25 JUN 97  
G CO80689  
J A S 24 JUN 98  
FORMTEK  
DRAWN  
WJM 18 SEP 79  
CHECK  
FORMTEK  
WJM 18 SEP 79  
CHECK



- NOTES
- 1 - ENCLOSURE FINISHED WITH GREEN EPOXY BASED ENAMEL COLOR NO. 34151 PER FEDERAL STD 595
  - 2 - SWITCH SEALED PER MIL-S-8805 SYMBOL 4
  - (3) TO ADJUST ROLLER DIRECTION, REMOVE ROLLER GUIDE LOCK RING, SCREW ROLLER GUIDE DOWN AS FAR AS POSSIBLE, THEN UNSCREW TO DESIRED DIRECTION. SECURE BY REPLACING ROLLER GUIDE LOCK RING
  - 4 - CIRCUIT DIAGRAM AND CATALOG LISTING ARE SHOWN ON NAME-PLATE
  - 5 - COINCIDENCE OF OPERATING AND RELEASING POINTS: .010 OF PLUNGER TRAVEL
  - (6) HARDWARE MAY BE PACKAGED UNASSEMBLED PER MIL-S-8805

THIS DRAWING COVERS A PROPRIETARY ITEM AND IS THE PROPERTY OF MICRO SWITCH, A DIVISION OF MINNEAPOLIS-HONEYWELL REGULATOR CO. THIS DRAWING IS NOT TO BE COPIED OR USED WITHOUT THE APPROVAL OF MICRO SWITCH.			
CHARACTERISTICS		ELECTRICAL DATA	
OPERATING FORCE ----- 6-12 LB		CONTACT ARRANGEMENT 2X S P D T	
FULL OVERTRAVEL FORCE----- 30 LB MAX		28 VDC	
RELEASE FORCE ----- 4 LB MIN		SEA LEVEL 50,000 FT.	
PRETRAVEL ----- .040 MAX		LOAD	
DIFFERENTIAL TRAVEL ----- .020 MAX		RES	4
OVERTRAVEL ----- .250 MIN		IND	2
		MOTOR	4
		SCALE FULL	
		DO NOT SCALE PRINT	
		UNLESS OTHERWISE NOTED	
		DIMENSIONS ARE IN INCHES	
		TOLERANCES ARE:	
		ONE PLACE (.0)	±.030
		TWO PLACE (.00)	±.015
		THREE PLACE (.000)	±.008
		ANGLES	±
		WEIGHT 6 OZ MAX	

ANSI Y14.5M-1982 APPLIES