



**Part Number :** [10845150](#)

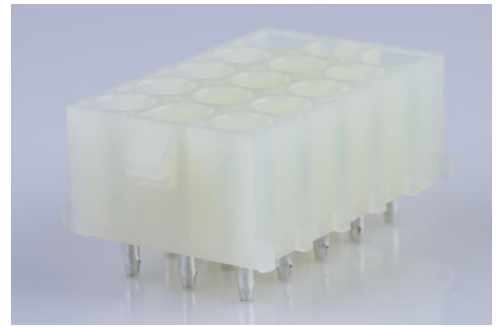
**Product Description :** 6.35mm Pitch MLX Power Connector Header, Vertical, 15 Circuits, Polyester 94V-0, Tin (Sn) Plating, White

**Series Number :** 42002

**Status :** Active

**Product Category :** PCB Headers and Receptacles

**Engineering Part Number :** 42002-15C1A1



---

## Documents and Resources

### Drawings

[010845150 sd.pdf](#)

[PK-43255-001-001.pdf](#)

[PK-43255-003-001.pdf](#)

### 3D Models and Design Files

[STEP AP242](#)

[SOLIDWORKS](#)

[Creo](#)

[Symbol and Footprint \(Multi-Format\)](#)


### Specifications

[PSX-42002-0001-001.pdf](#)

---

## Product Environment Compliance

### Compliance

GADSL/IMDS	Not Relevant
China RoHS	 per SJ/T 11365-2006
EU ELV	Not Relevant
Low-Halogen Status	Not Low-Halogen per IEC 61249-2-21
REACH SVHC	Not Contained per D(2025)7771-DC (04 Feb 2026)
EU RoHS	Compliant per EU 2015/863

## Compliance Statements

- EU RoHS
- REACH SVHC
- Low-Halogen

## Industry Documents

- IPC 1752A Class C
- IPC 1752A Class D
- Molex Product Compliance Declaration
- IEC-62474
- chemSHERPA (xml)

## Substances of Interest

- PFAS

## EU RoHS Certificate of Compliance

## Additional Product Compliance Information

---

## Part Details

### General

Status	Active
Category	PCB Headers and Receptacles
Series	42002
Description	6.35mm Pitch MLX Power Connector Header, Vertical, 15 Circuits, Polyester 94V-0, Tin (Sn) Plating, White
Application	Wire-to-Board
Comments	Solder Type
Component Type	PCB Header
Product Name	MLX
UPC	800753869165

### Agency

CSA	LR19980
UL	E29179

### Electrical

Current - Maximum per Contact	13.5A, 20.0A
Voltage - Maximum	600V

## Physical

Breakaway	No
Circuits (Loaded)	15
Circuits (maximum)	15
Color - Resin	Natural
Durability (mating cycles max)	50
First Mate / Last Break	No
Glow-Wire Capable	No
Guide to Mating Part	Yes
Keying to Mating Part	Yes
Lock to Mating Part	Yes
Material - Metal	Phosphor Bronze
Material - Plating Mating	Tin
Material - Plating Termination	Tin
Material - Resin	Polyester
Net Weight	8.835/g
Number of Rows	3
Orientation	Vertical
Packaging Type	Bag
PCB Retention	Yes
PCB Thickness - Recommended	1.60mm
PC Tail Length	4.27mm
Pitch - Mating Interface	6.35mm
Pitch - Termination Interface	6.35mm
Plating min - Termination	3.560µm
Polarized to Mating Part	Yes
Polarized to PCB	Yes
Shrouded	Shrouded
Stackable	No
Temperature Range - Operating	-55° to +105°C
Termination Interface Style	Through Hole

## Solder Process Data

Max-Duration	10
Lead-Free Process Capability	WAVE

---

Max-Temp	260
----------	-----

---

## Mates With / Use With

### Mates with Part(s)

Description	Part Number
2.13mm Diameter MLX Power Crimp Housing Plugs	<u>42021</u>

---

This document was generated on May 19, 2026