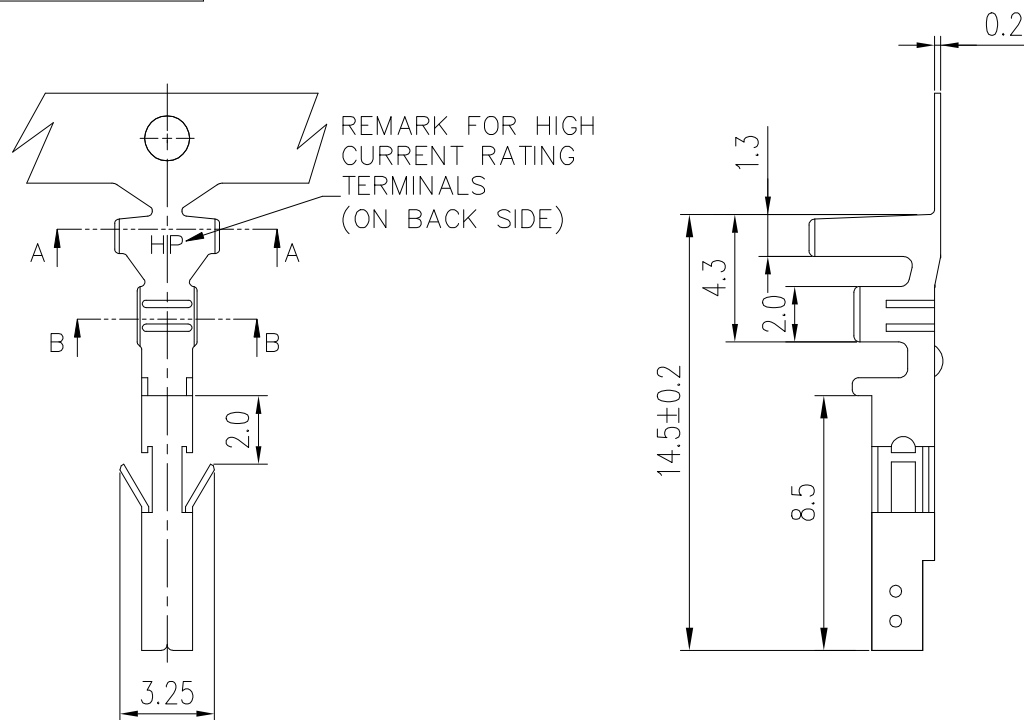


PRODUCT NUMBER
SEE PART NO. TABLE

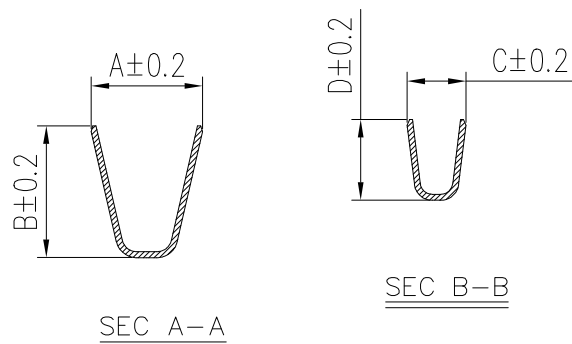
NOTES:

1. MATERIAL: HIGH CONDUCTIVITY COPPER ALLOY. MIN. 50u" Ni UNDERPLATING
2. THIS TERMINAL IS USED WITH FCI RECEPTACLE HSG 10127815 AND 10122956 SERIES.
3. MATE WITH FCI HCC HEADERS AND PLUG TERMINALS FOR HIGH CURRENT APPLICATION.
4. PRODUCT SPECIFICATION: GS-12-1333.
5. PACKAGE SPECIFICATION: GS-14-2362.
6. PART NUMBER SCHEME:
10136289- 1 X 1 X LF

PLATING TYPE:
P: PRE-PLATED
BLANK: POST-PLATEDPLATING CODE:
1: GOLD FLASH
2: 80u" BRIGHT TIN
3: 100u" MATTE TIN
4: 30u" GOLD

7. DIMENSIONAL & PART NO. TABLE:

PART NO.	A	B	C	D	APPLICABLE WIRES
10136289-1X1XLF	3.7	4.5	1.8	2.7	#16~#20 MAX. OD: 3.1mm



mat'l. code				surface	tolerance	projection	product family			
							MINITEK PWR4.2 HCC			
ltr	ecn no	dr	date	tolerances unless otherwise specified			title			
A		TAI	2015-07-27	angles	X.X ±0.4		MINITEK PWR4.2 REC. TERMINAL HIGH CURRENT			
B	ELX-T-24718	TAI	2016-09-22	linear	X.XX ±0.30	mm				
C	ELX-N-27760	TONY	2017-08-16	X'±1"		scale N.T.S.				
				dr	KENNY TAI	2015-07-23	dwg no		sheet 1 of 1	size
				enr	KENNY TAI	2015-07-23	10136289		A4	
				chr	KENNY TAI	2015-07-23				
				appd	PM ZHENG	2015-07-27				
sheet index	revision	c					type		Product Customer Drawing	
	sheet	1								