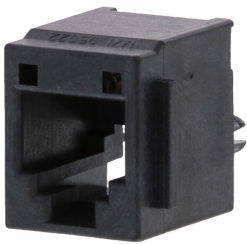




**Part Number :** [955222667](#)  
**Product Description :** Modular Jack, Vertical,  
Top Entry, Through Hole, 6/6, High Profile,  
with Ribs, Tray  
**Series Number :** 95522  
**Status :** Active  
**Product Category :** Modular Jacks and Plugs



## Documents & Resources


**Drawings**  
[955222667\\_sd.pdf](#)  
[PK-95022-001.pdf](#)

**3D Models and Design Files**  
[955222667\\_stp.zip](#)

**Specifications**  
[PS-95522-002-001.pdf](#)

## Product Environment Compliance

### Compliance

GADSL/IMDS	Compliant with Exemption 44; 33; 34
China RoHS	
EU ELV	Not Relevant
Low-Halogen Status	Low-Halogen per IEC 61249-2-21
REACH SVHC	Not Contained per D(2024)4144-DC (27 June 2024)
EU RoHS	Compliant per EU 2015/863

Multiple Part Product Compliance Statements  
- Eu RoHS  
- REACH SVHC  
- Low-Halogen

Multiple Part Industry Compliance Documents  
- IPC 1752A Class C  
- IPC 1752A Class D

- Molex Product Compliance Declaration
- IEC-62474
- chemSHERPA (xml)

## EU RoHS Certificate of Compliance

---

### Part Details

#### General

Status	Active
Category	Modular Jacks and Plugs
Series	95522
Description	Modular Jack, Vertical, Top Entry, Through Hole, 6/6, High Profile, with Ribs, Tray
Comments	Reflow Capable
Component Type	PCB Jack
Magnetic	No
Performance Category	3
Power over Ethernet (PoE)	N/A
Product Name	Modular Jack 6/6
UPC	800756739458

#### Agency

UL	E107635
----	---------

#### Electrical

Current - Maximum per Contact	1.5A
Shielded	No
Voltage - Maximum	125V DC

#### Physical

Boot Color	N/A
Color - Resin	Black
Durability (mating cycles max)	2500
Flammability	94V-0
Inverted / Top Latch	No
Jack Height	16.25mm

Lightpipes/LEDs	None
Material - Metal	Copper Alloy
Material - Plating Mating	Gold over Palladium Nickel
Material - Plating Termination	Tin
Material - Resin	High Temperature Thermoplastic
Net Weight	2.670/g
Orientation	Vertical (Top Entry)
Packaging Type	Tray
PCB Locator	Yes
PCB Retention	Yes
PCB Thickness - Recommended	1.57mm
Pitch - Mating Interface	1.02mm
Pitch - Termination Interface	1.27mm
Plating min - Mating	0.051µm, 1.016µm
Plating min - Termination	1.905µm
Port Configuration	1x1
Positions / Loaded Contacts	6/6
Temperature Range - Operating	-40° to +85°C
Termination Interface Style	Through Hole
Waterproof / Dustproof	No
Wire/Cable Type	N/A

## Solder Process Data

Max-Duration	5
Lead-Free Process Capability	WAVE
Max-Cycle	1
Max-Temp	260

---

This document was generated on Feb 08, 2025