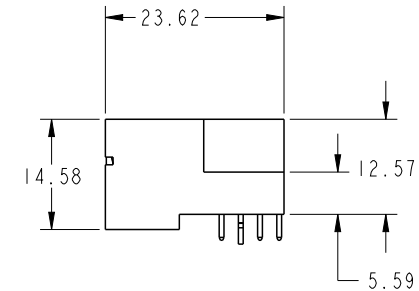
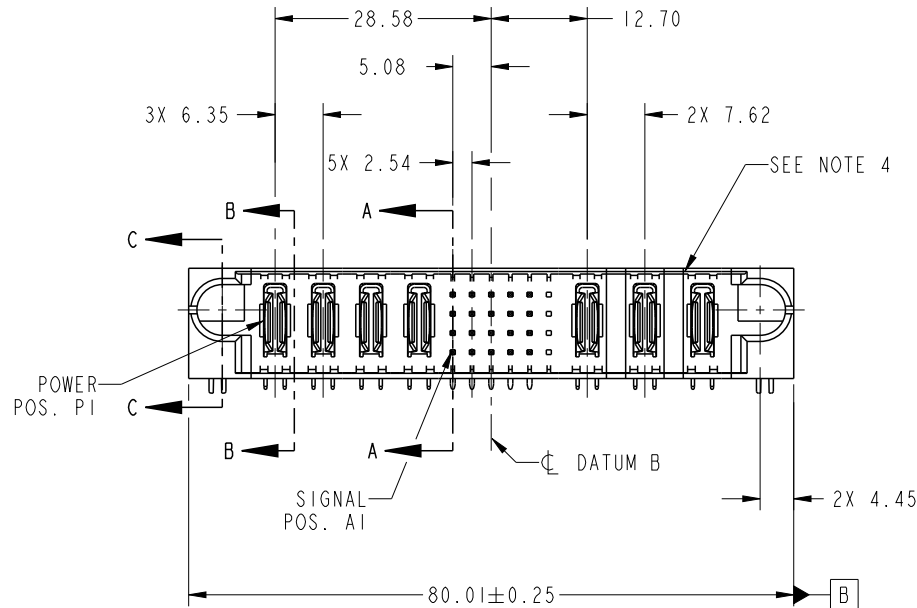




Copyright FCI.

PRODUCT NO.	ROWS		POWER					SIGNAL						POWER			
		E1	P1	P2	P3	P4	1	2	3	4	5	6	P5	P6	P7	E2	
51939-715-- NOTE 3	D C B A		PA	PA	PA	PA	UUUUUX	TTTTTX	SSSSSX	RRRRRE			PA	PA	PA		



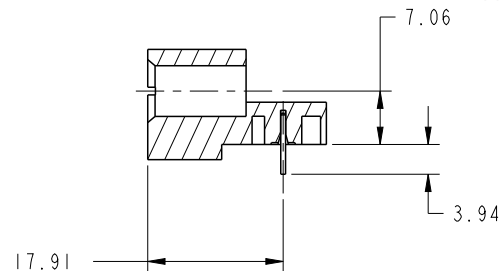
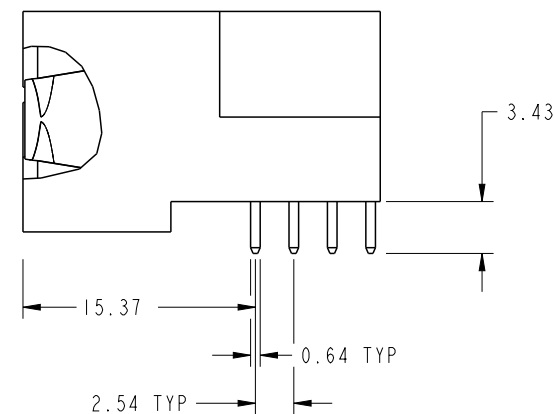
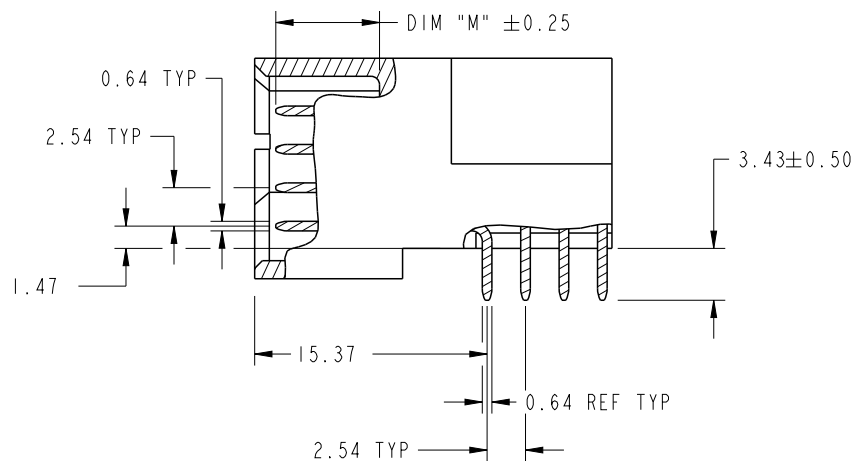
CODE	DIM "M" MATING LENGTH	CONTACT TYPE
U	[6.86]	SIGNAL
T	[6.86]	SIGNAL
S	[6.86]	SIGNAL
R	[6.86]	SIGNAL
E	[5.59]	SIGNAL
PA	[N/A]	POWER
HA	[N/A]	HOLD-DOWN
X	N/A	OMITTED
E	[5.59]	SIGNAL

spec ref		*		dr	Ruan MT	2012/10/26	<div>projection</div> <div></div>	<div>MM</div> <div></div>	size	A4	scale	1:1		
tolerance std	TOLERANCES UNLESS OTHERWISE SPECIFIED			eng	Ruan MT	2013/05/20			ecn no	-				
				chr	-	-								
				appr	Pei-Ming Zheng	2013/05/20			product family		PwrBlade	rel level		
surface	<div>✓</div>	linear	0.X	±0.5	<div></div>	title	4P + 24S + 3ACP			dwg no	51939-715		rev	A
			0.XX	±0.25										
			0.XXX	±0.1										
		angular	0°	±2°	www.fci.com	cat. no.	-	Product - Customer Drw			sheet 1 of 4			

PrintE File - REV C - 2009-06-09

PRODUCT NUMBER

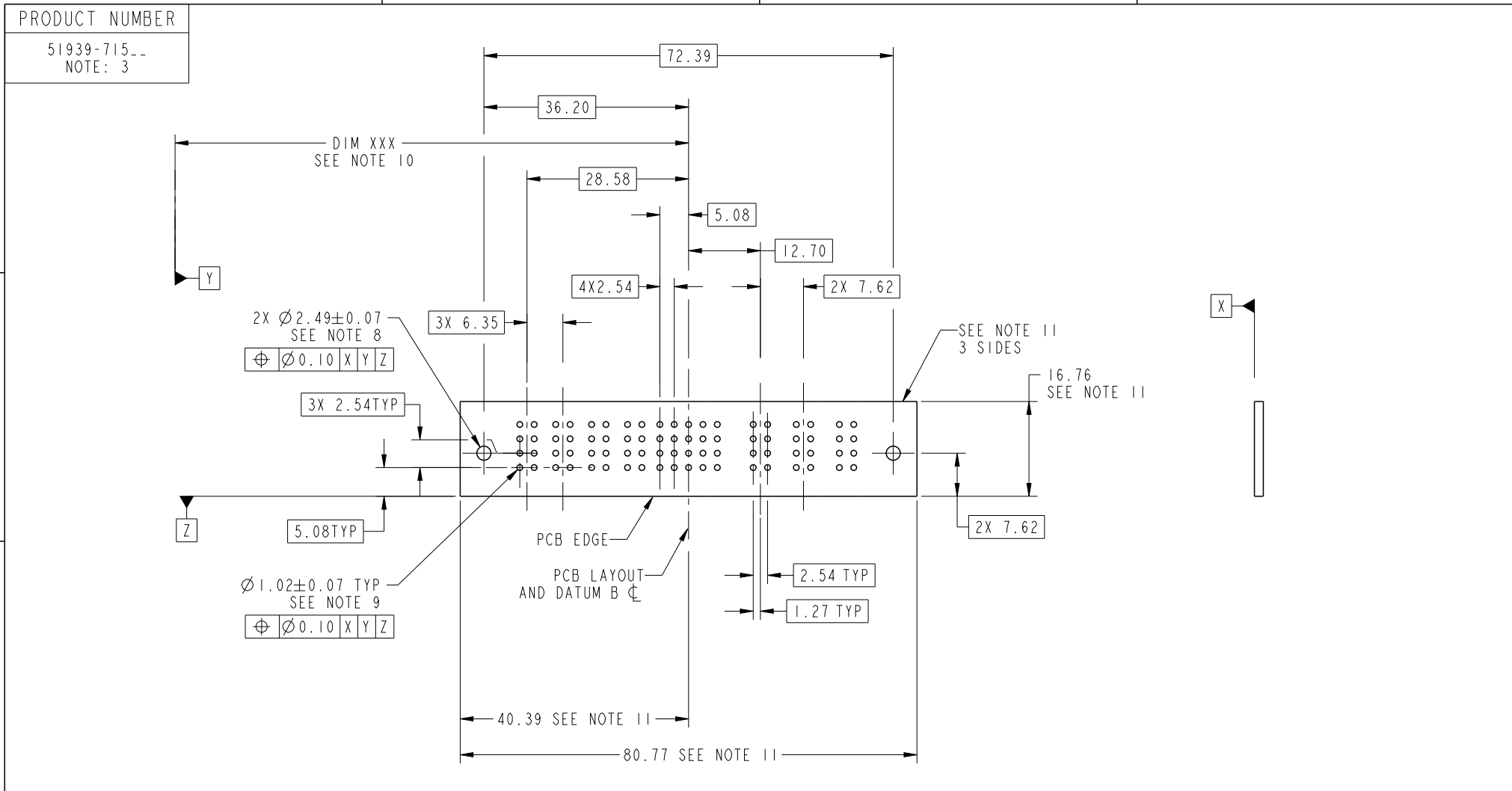
51939-715--
NOTE: 3



dr	Ruan MT	2012/10/26	projection	MM	size	A4	scale	1:1
eng	Ruan MT	2013/05/20			ecn no	-		
chr	-	-			rel level	Released		
appr	Pei-Ming Zheng	2013/05/20	product family	PwrBlade				
		title	4P + 24S + 3ACP RIGHT ANGLE STB HEADER			dwg no	51939-715	rev
www.fci.com		cat. no.	-	Product - Customer Drw			sheet 2 of 4	



Copyright FCI.



RECOMMENDED PCB LAYOUT

dr	Ruan MT	2012/10/26	<div>projection</div> <div></div>	<div>MM</div> <div></div>	size	A4	scale	1:1	
eng	Ruan MT	2013/05/20			ecn no	-			
chr	-	-			rel level	Released			
appr	Pei-Ming Zheng	2013/05/20	product family		PwrBlade				
<div>FCi</div>		title			4P + 24S + 3ACP		dwg no	51939-715	rev
					RIGHT ANGLE STB HEADER				
www.fci.com		cat. no.			-		Product - Customer Drw		sheet 3 of 4



Copyright FCI.

PRODUCT NUMBER
51939-715--
NOTE: 3

NOTES:

1. DIMENSIONS AND TOLERANCES ARE IN ACCORDANCE WITH
ASME Y14.5M, 1994 UNLESS OTHERWISE SPECIFIED.

CONNECTOR NOTES:

- 2. HOUSING MATERIAL: UL 94 V-0 GLASS FILLED HIGH-TEMP THERMOPLASTIC
POWER CONTACT MATERIAL: COPPER ALLOY
SIGNAL PIN MATERIAL: COPPER ALLOY
 - 3. SEE ITEM 1 & 2 IN PRINT 10064183 FOR PLATING SPEC OF 51939-715 AND 51939-715LF RESPECTIVELY.
 - 4. MANUFACTURER'S NAME, DATE CODE AND OPTIONAL P/N TO APPEAR ON
THIS SURFACE. THE P/N CAN BE OMITTED IF THERE IS NOT ENOUGH
SPACE ON THIS SURFACE.
 - 5. PRODUCT SPECIFICATION GS-12-149.
APPLICATION SPECIFICATION BUS-20-067.
 - 6. PACKAGED IN TRAYS.
- PCB NOTES:
- 7. ALL HOLE DIAMETERS ARE FINISHED HOLE SIZE.
 - 8. MOUNTING HOLES, WHERE APPLICABLE, ARE UNPLATED.
 - 9. $\varnothing 1.151 \pm 0.025$ DRILLED HOLES PLATED WITH
0.008 MIN SnPb OR Sn OVER 0.03
TO 0.08 Cu PLATING TO ACHIEVE
 $\varnothing 1.02 \pm 0.07$ HOLE.
 - 10. "DIM XXX" TO BE DETERMINED BY THE CUSTOMER.
 - 11. CONNECTOR KEEP-OUT ZONE.

dr	Ruan MT	2012/10/26	<div>projection</div>	<div>MM</div>	size	A4	scale	1:1				
eng	Ruan MT	2013/05/20			ecn no	-						
chr	-	-										
appr	Pei-Ming Zheng	2013/05/20	product family		PwrBlade	rel level		Released				
	title				4P + 24S + 3ACP			dwg no	51939-715		rev	A
					RIGHT ANGLE STB HEADER							
www.fci.com		cat. no.		-		Product - Customer Drw			sheet 4 of 4			