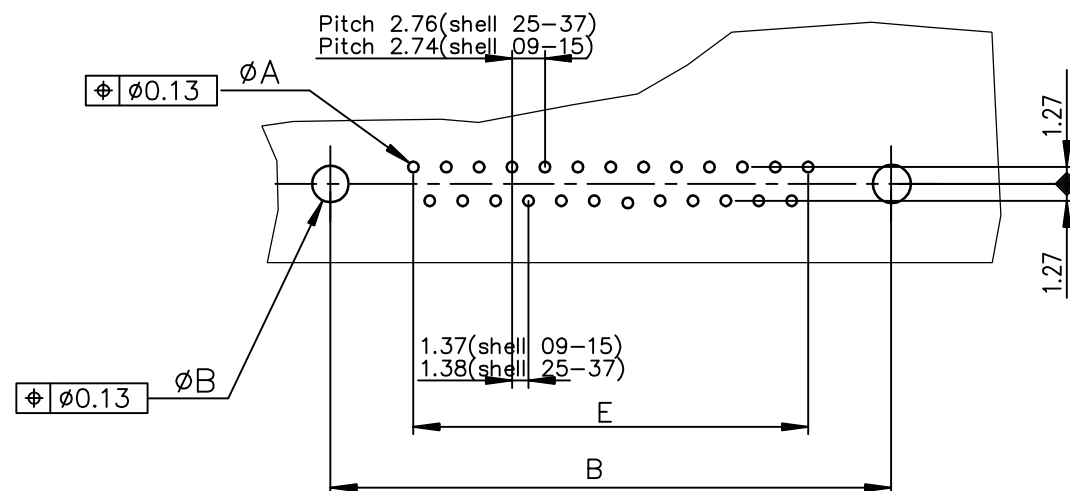
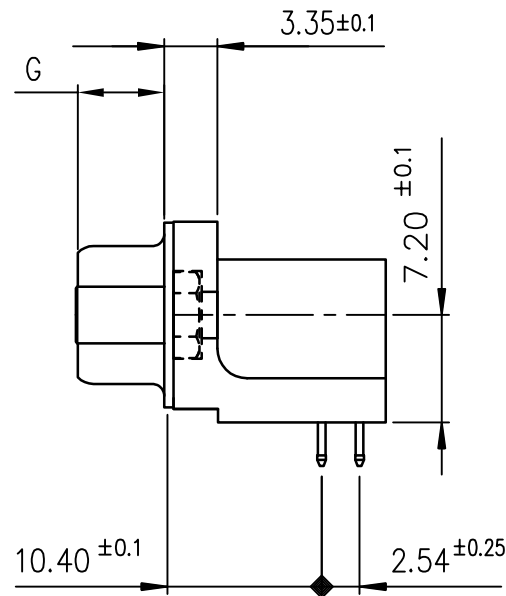


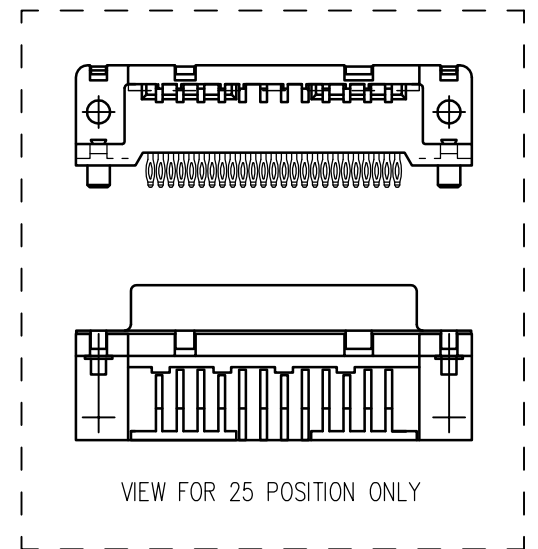
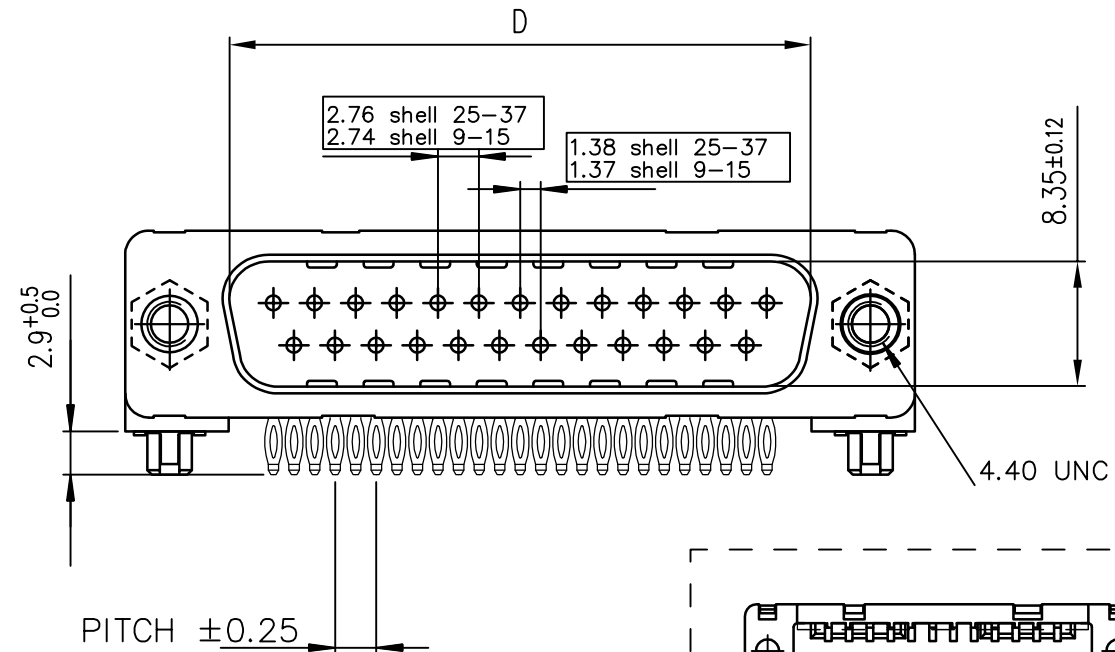
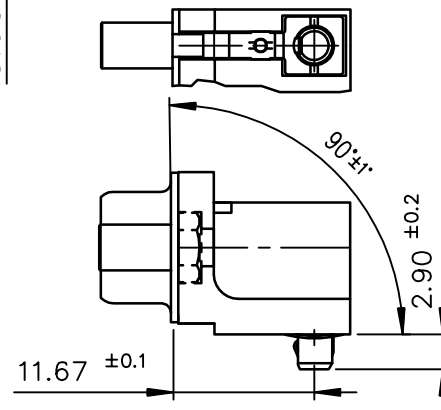
PC card drilling dimensions(after plating)  
(thickness 1.60 ±0.20 )



view shown without plastic pin and grounding



Detail of grounding strip

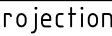
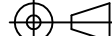



LEAD FREE PART NUMBER

SHELL	A±0.38	B±0.12	C±0.10	D +0.25 0	E±0.07	G	PART NUMBER	PART NUMBER
09	30.81	24.99	18.00	16.79	10.96	5.90 +0.15 0	D09P81C4GV00LF	D09P81C6GV00LF
15	39.14	33.32	26.32	25.12	19.18	5.90 +0.15 0	D15P81C4GV00LF	D15P81C6GV00LF
25	53.03	47.04	40.04	38.84	33.12	5.70 +0.25 0	D25P81C4GV00LF	D25P81C6GV00LF
37	69.32	63.50	56.50	55.30	49.68	5.70 +0.25 0	D37P81C4GV00LF	D37P81C6GV00LF
Gold flash							0.76 μ gold/GxT	

GENERAL CHARACTERISTICS AND ROHS INFORMATIONS:

SEE DRAWING C01-8646-0001

mat'l. code —				surface ISO 1302 ✓		tolerance ISO 406 ISO 1101		projection 		product family D—SUB						
ltr	ecn no	dr	date	tolerances unless otherwise specified							title					
H	ELX-I-18050	MP	2014/06/23	angles linear			.0±.0.3		MALE CONNECTOR DELTA-D EUROPE RIGHT ANGLED PRESS FIT							
J	ELX-I-33101	GM	2019-04-01				.00±0.1									
K	ELX-I-34612	GM	2019-20-08		0°±2°		.000±0.05									
				dr	PESSON		1997/05/15			dwg no			sheet 1 of 1		size	
				engr	GREGAR M		2019-04-01			C01-8646-0543			A3			
				chr	MITHUN PAUL		2019-20-08									
				appd	SANOJ P K		2019-20-08			type Product Customer Drawing						
sheet index		revision sheet		K	1											