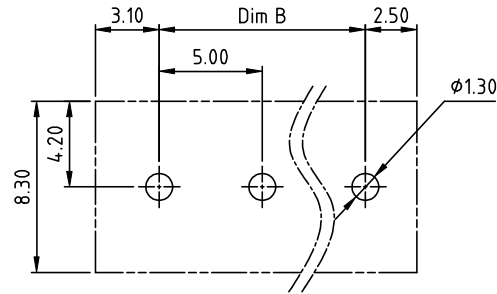
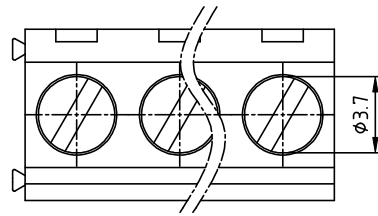
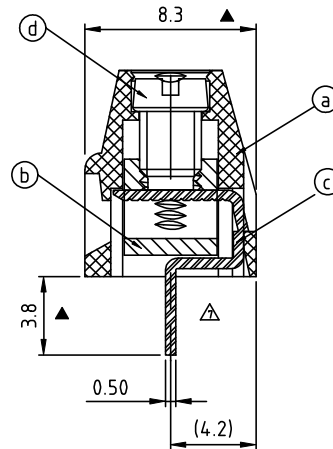
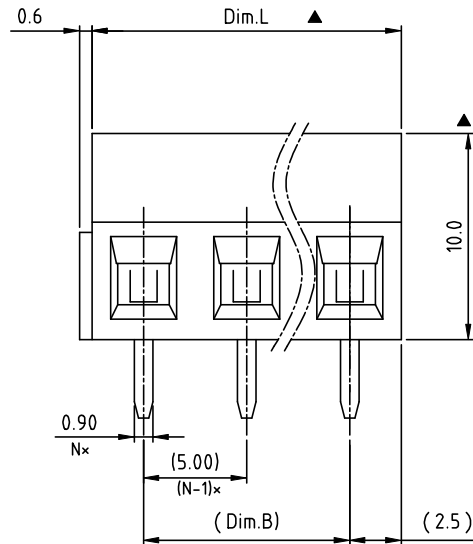


RoHS Compliant



P.C.B. LAYOUT

TOP VIEW



N = Number of poles

Dim L = N x 5.0

Dim B = (N - 1) x 5.0

	Dim L
2-6p	±0.15
7-12p	±0.25
13-18p	±0.35
19-24p	±0.40

Rev.	SIGN	DATE	DESCRIPTION	APPROVER
C	△	11.01'05	Standard spec is changed.	Marivn
D	△	01.18'07	Soldering temperature changed from 245° to 250°	Tason
D	△	01.18'07	Part NO is Changed	Tason
E	△	12.18'07	Screw is changed from M2.5 to M3.0	Marivn
F	△	08/26'09	Operating temperature changed from +105°C to +115°C	Aaron
F	△	08/26'09	And cULcs & VDE	Aaron
G	△	10/15'10	View revision	Aaron
H	△	09/15'14	update the drawing	Evan
I	△	11/06'19	Add the RoHS Compliant&Amphenol Logo.	Guoxue
I	△	11/06'19	Add the "Wave Soldering temperature: 260°C±5°C/5 Sec"	Guoxue
I	△	11/06'19	Safety Approval is change from cULus to UL.	Guoxue
I	△	11/06'19	Add the "Reference dimension"	Guoxue
I	△	11/06'19	Delelte the Dim.B.	Guoxue

THIS IS CAD DRAWING, DO NOT REVISE MANUALLY!!!

Material: ● Item① Terminal housing: Thermoplastic (UL 94V-0)
● Item② Clamp: Brass ,Ni plated
● Item③ Wire guard solder pin: Brass ,Tin plated
● Item④ Terminal screw: Steel Zinc plating"- "slot type

△ Electrical UL / VDE △

● Voltage rating: 300VAC/250VAC

● Current rating: 10A / 10A

● Wire range: 0.5-1.5mm²

● Solid wire(AWG): 16-26

● Stranded wire(AWG): 16-26

● Torque: 3.5Lb-In / 0.4N.m



△ ● Screw: M3.0

● Wire strip length: 5-6mm

● Withstanding Voltage: 1.6KV/2KV

△ ● Operating temperature: -40°C to +115°C

△ △ ● Wave Soldering temperature: 260°C±5°C/5 Sec

△ ● Safety Approval:   △

● Critical dimension: △

△ ● Reference dimension: (×) The dimensions of pitch are just for reference, take the actual assembly result as a judgment when inserting the terminal block into the PCB hole.

△ TO xx 01 x 2 xxxx G

No. of poles end stackable design

02 2 POLES

03 3 POLES

... ..

24 24 POLES

Color
0 Black (RAL9005)
2 Red (RAL3001/D)
3 Orange(RAL2011/P)
4 Yellow(RAL1018/A)
5 Green(RAL6018/T)
6 Blue (RAL5015/A)
8 Grey(RAL7035/D)
9 White(RAL1102)
C Green(RAL6018/U)

G RoHS compliant (lead<4%)
In copper Alloy

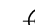
0000:"@Logo (Standard)
000A:"ANYTEK"Logo △
0091:"ANYTEK"Logo

Any special item by customer request, please contact sales department.

Amphenol
ANYTEK

CUSTOMER COPY

ALL RIGHTS RESERVED. REPRODUCTION OR ISSUE TO THIRD PARTIES IN ANY FORM WHATSOEVER IS NOT PERMITTED WITHOUT WRITTEN AUTHORITY FROM THE PROPRIETOR. PROPERTY OF ANYTEK TECHNOLOGY CO., LTD

TITLE	TO 5.0mm Series (2P-24P)						
PART NO.	TOxx01x2xxxxG			DWG NO.	8T00001		
APPROVED	CHECKED	DESIGNED	DRAWN	CUST NO.			Tolerance
		Guoxue 2019.11.06	Guoxue 2019.11.06		UNIT: mm	X. ±0.50	
					SCALE: NONE	X.X ±0.30	
				SHEET: 01/01	REV: I	X.XX ±0.10	
						X° ±1°	

SHEET: 01/01 REV.: I