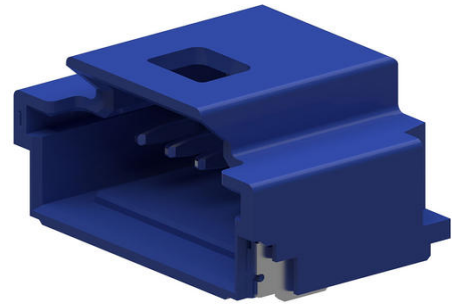




Part Number : [5015681247](#)
Series Number : 501568
Status : Active - Proprietary
Product Category : PCB Headers and Receptacles



Drawings

[5015681247_sd.pdf](#)

[5015681247_stp.zip](#)

[5015681247.dxf](#)

Specifications

[5013300000-AS-000.pdf](#)

[SPK-501568-001-001.pdf](#)


[SPK-501568-002-001.pdf](#)

[5013300000-PS-001.pdf](#)

[PS-501568-001-001.pdf](#)

Product Environment Compliance

Compliance

GADSL/IMDS	Compliant with Exemption 44; 33
China RoHS	 per SJ/T 11365-2006
EU ELV	Not Relevant
Low-Halogen Status	Not Low-Halogen per IEC 61249-2-21
REACH SVHC	Not Contained per D(2025)7771-DC (04 Feb 2026)
EU RoHS	Compliant per EU 2015/863

Compliance Statements

- EU RoHS
- REACH SVHC
- Low-Halogen

Industry Documents

- IPC 1752A Class C
- IPC 1752A Class D
- Molex Product Compliance Declaration
- IEC-62474
- chemSHERPA (xml)

Substances of Interest

- PFAS

EU RoHS Certificate of Compliance

Additional Product Compliance Information

Part Details

General

Status	Active - Proprietary
Category	PCB Headers and Receptacles
Series	501568
Description	1.00mm Pitch, Pico-Clasp PCB Header, Single Row, Right-Angle, Surface Mount, Tin Plated, Inner Positive Lock, 12 Circuits, Blue
Application	Signal, Wire-to-Board
Component Type	PCB Header
Product Name	Pico-Clasp
UPC	800756911311

Agency

UL	E29179
----	--------

Electrical

Current - Maximum per Contact	1.0A
Voltage - Maximum	100V AC (RMS)/DC

Physical

Breakaway	No
Circuits (Loaded)	12
Circuits (maximum)	12
Color - Resin	Blue

Durability (mating cycles max)	30
First Mate / Last Break	No
Glow-Wire Capable	No
Guide to Mating Part	No
Keying to Mating Part	No
Lock to Mating Part	Yes
Material - Metal	Phosphor Bronze
Material - Plating Mating	Tin
Material - Plating Termination	Tin
Material - Resin	Nylon
Net Weight	243.730/mg
Number of Rows	1
Orientation	Right Angle
Packaging Type	Embossed Tape on Reel
PCB Locator	No
PCB Retention	Yes
Pitch - Mating Interface	1.00mm
Polarized to Mating Part	Yes
Polarized to PCB	No
Shrouded	Shrouded
Stackable	No
Temperature Range - Operating	-40° to +105°C
Termination Interface Style	Surface Mount

Mates With / Use With

Mates with Part(s)

Description	Part Number
Pico-Clasp Low-Halogen Single Row Receptacle Housings	<u>501330</u>

This document was generated on Apr 28, 2026