

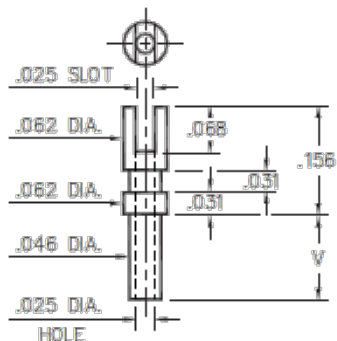


PRODUCT NUMBER: 2103-4-01-44-00-00-07-0

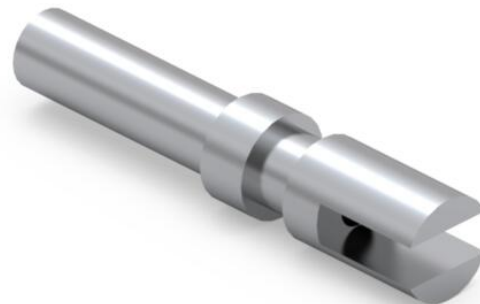
www.mill-max.com
DATA SHEET

2103-X-01-XX-00-00-07-0

Swage mount in .052 hole



Basic Part Number	Board Thickness	Length V
2103-1	.031	.055
2103-2	.062	.086
2103-3	.094	.117
2103-4	.125	.149



2103-4-01-44-00-00-07-0 SPECIFICATIONS

General Info		Materials	Technical Specs
Description ¹ :	Slotted Terminal Pin	Shell Material ⁴ :	Operating Temperature Range ⁶ :
Mounting Feature:	Swage Mount		- 55/+125° C
Mounting Hole:	.052" (1,321mm)	Shell Plating ⁵ :	Maximum Current:
Alternate Mounting:	N/A	300 μ" Silver over Copper	Application Specific
Packaging:	Packaged in Bulk		
RoHS ² :	Yes		
Product Lifecycle ³ :	Active		
Country Of Origin:	USA		

NOTES:

1. Standard Tolerances:
Lengths $\pm 0.005"$ (0,13)
Diameters: $\pm 0.002"$ (0,051)
Angles: $\pm 2^\circ$
2. Mill-Max products labeled with the RoHS symbol are compliant with all three ROHS Directives. All of our products previously described as RoHS (2002/95/EC) and RoHS-2 (2011/65/EC) are also compliant with RoHS-3 (2015/863/EU).
3. Part is Active and in Production, No Scheduled Obsolescence
4. Brass Alloy 360 per ASTM B 16, or 385 per ASTM B455
5. SILVER per ASTM B 700, Type 1 (99.9% min. silver), Grade B (Bright), Class S (anti-tarnish treatment); COPPER per ASTM B 734
6. Per IEC 60512-11-(4,-9,-10,-12)

ADDITIONAL NOTES AND SPECIFICATIONS

In the interest of improved design, quality and performance , Mill-Max reserves the right to make changes in its specifications without prior notice. Specifications and tolerances are provided wherever possible. The tolerance on dimensions of critical to function features is typically held tighter than the stated standard tolerances, such as press-fits, holes and lengths affecting the coplanarity of SMT products. Due to the wide variety of interconnects Mill-Max offers, the specific tolerances vary from product to product. If you need information regarding the tolerance of a particular part, please contact Technical Services.

RELATED LINKS AND DOCUMENTS

Engineering Notebook: (<https://www.mill-max.com/engineering-notebooks/printed-circuit-board-terminal-pins/introduction-to-swage-assembly>)

Engineering Notebook: (<https://www.mill-max.com/engineering-notebooks/printed-circuit-board-terminal-pins>)

Environmental Compliance: (<https://www.mill-max.com/rohs>)