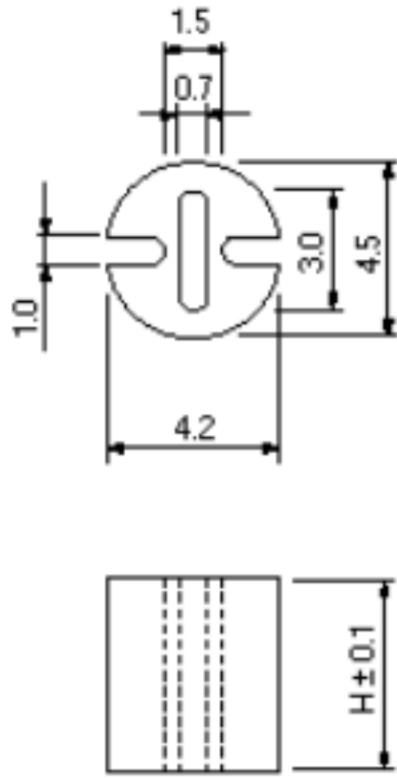


LM Series

all categories > through hole technology > led spacer > for bi-lead and tri-lead LED



**For Bi-lead and Tri-lead LED**

- This is for Bi-Lead and Tri-Lead LED.
- Color....Black
- Material....Thermo Plasticity Elastomer (UL94V-0)
- Recommended LED Head Size (phi mm)....3, 5
- Temperature Range (Degrees Celsius)....-40 to +125

[Save To Favorites](#)

[Download Catalog](#)

[Ask a Question](#)

[Pre-Production Quote Request](#)

[Request Sample](#)

[ADD TO CART](#)

>> request quote / information | >> download specs

N/O	H (mm)
LM-1	1
LM-1.5	1.5
LM-2	2
LM-2.5	2.5
LM-3	3
LM-3.5	3.5
LM-4	4
LM-4.5	4.5
LM-5	5
LM-5.5	5.5
LM-6	6
LM-6.5	6.5
LM-7	7
LM-7.5	7.5
LM-8	8
LM-8.5	8.5
LM-9	9
LM-9.5	9.5
LM-10	10
LM-11	11
LM-12	12
LM-13	13
LM-14	14
LM-15	15
LM-16	16
LM-17	17
LM-18	18
LM-19	19
LM-20	20

[Pre-Production Quote Request](#)