



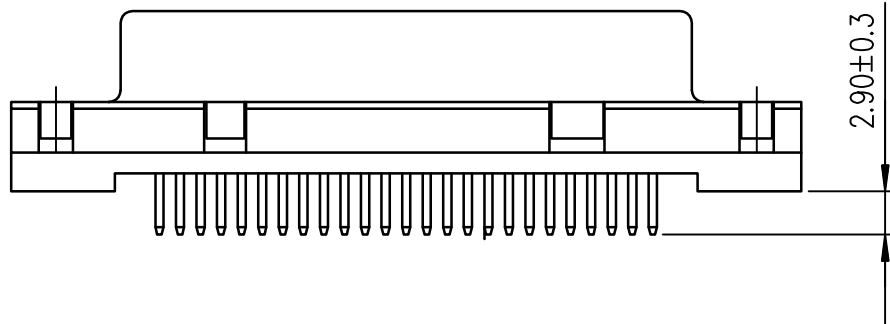
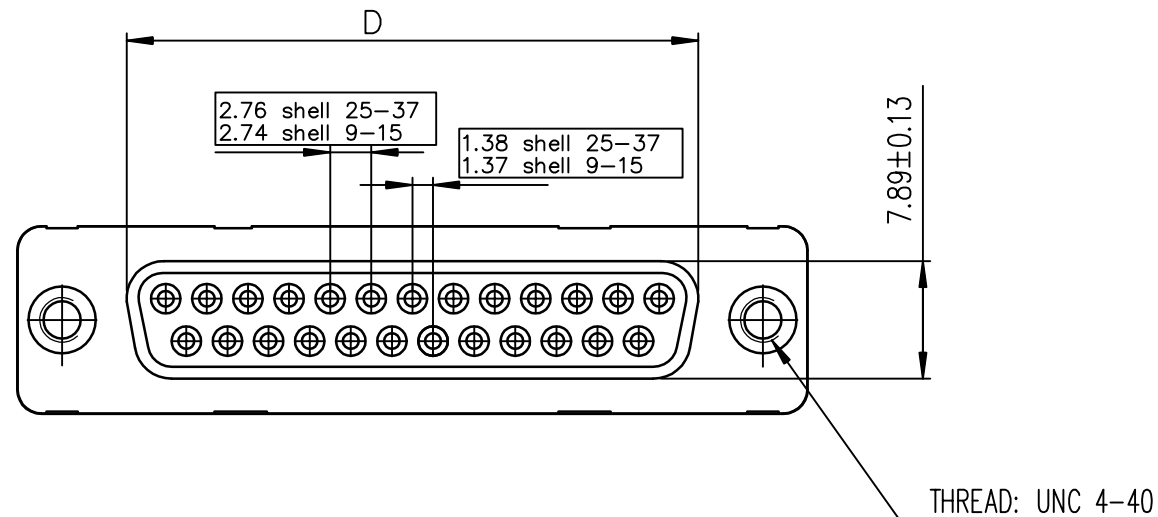
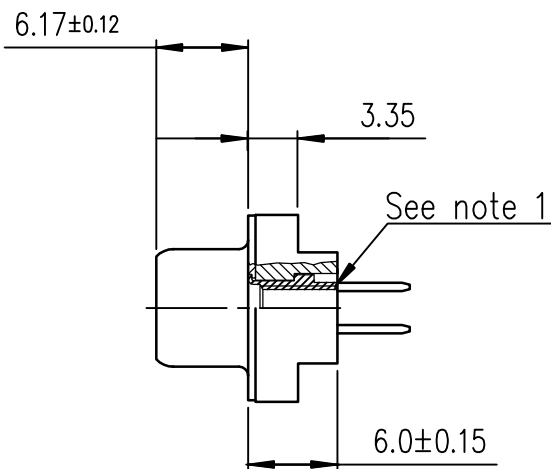
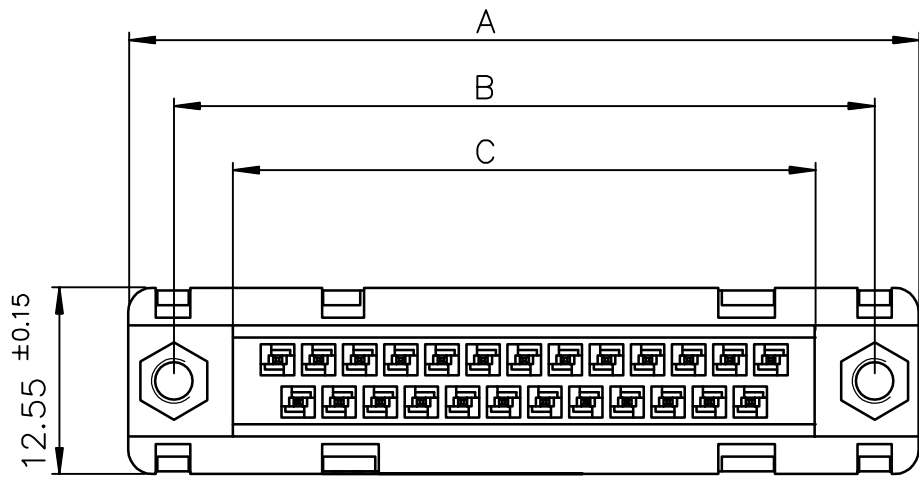
FCIconnect.com

Copyright FCI

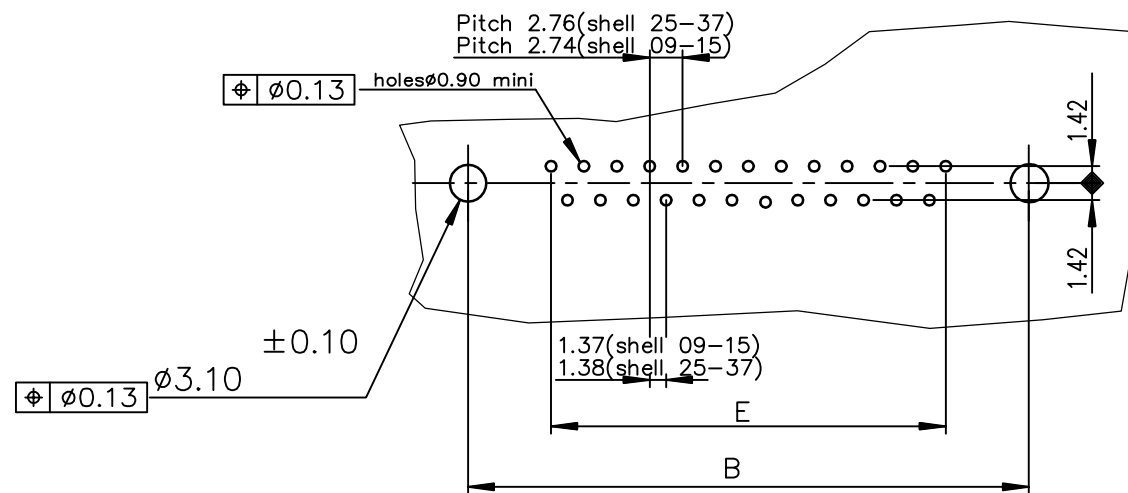
LEAD FREE PART NUMBER

SHELL	A±0.38	B±0.12	C±0.10	D±0.25	E±0.07	PART NUMBER
09	30.81	24.99	16.96	16.21	10.96	D09S24A.PX00LF
15	39.14	33.32	25.18	24.54	19.18	D15S24A.PX00LF
25	53.03	47.04	39.12	38.25	33.12	D25S24A.PX00LF
37	69.32	63.50	55.68	54.71	49.68	D37S24A.PX00LF

Plating: 4 --> Flash Au
Plating: 6 --> 0.76μ Au



PC card drilling dimensions(after plating)
(thickness 1.60±0.20mm)



Notes:

1) The nut can protrude above the surface of insulator but maintaining the footprint dimension 6.0±0.15 mm.

GENERAL CHARACTERISTICS AND ROHS INFORMATIONS:
SEE DRAWING C01-8646-0000

mat'l. code				surface	tolerance	projection	product family			
-				ISO 1302	ISO 406 ISO 1101		D-SUB			
ltr	ecn no	dr	date	tolerances unless otherwise specified		MM	title			
E	ELX-I-22878	AB	2015/01/06	angles	linear					
				0°±2'			FEMALE CONNECTOR STD EUROPE			
						scale 2:1	STRAIGHT SOLDER TYPE FOR PCB 1.6mm			
				dr	JOUBERT	1996/09/10	dwg no		sheet 1 of 1	size
				engr	ALIAS BABU	2015/01/06	C01-8646-0492			A3
				chr	MITHUN PAUL	2015/01/06	type Product Customer Drawing			
				app	BIJU K PAUL	2015/01/06				
sheet index	revision	E								
	sheet	1								