

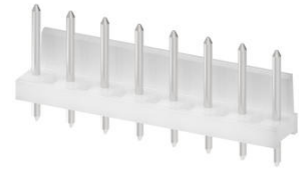
Part Number : [1730830008](#)

Product Description : KK 508 Header, Vertical, with Polarizing Backwall, Tin (Sn) Plating, Glow-Wire Capable, 8 Circuits

Series Number : 173083

Status : Active

Product Category : PCB Headers and Receptacles



Documents and Resources

Drawings

[1730830008_sd.pdf](#)

[PK-88596-1132-000.pdf](#)

3D Models and Design Files

[STEP AP242](#)

[SOLIDWORKS](#)

[Creo](#)

[Symbol and Footprint \(Multi-Format\)](#)

[SYM-173083-0008-001.zip](#)

Specifications


[AS-173083-0001-001.pdf](#)

[PS-173083-0001-001.pdf](#)

[TS-173083-0001-001.pdf](#)

Product Environment Compliance

Compliance

GADSL/IMDS	Compliant with Exemption 33
China RoHS	 per SJ/T 11365-2006
EU ELV	Not Relevant
Low-Halogen Status	Not Low-Halogen per IEC 61249-2-21
REACH SVHC	Contains 1,1'-(Ethane-1,2-diyl)bis[pentabromobenzene] per

	D(2025)7771-DC (04 Feb 2026)
EU RoHS	Compliant per EU 2015/863

Compliance Statements

- EU RoHS
- REACH SVHC
- Low-Halogen

Industry Documents

- IPC 1752A Class C
- IPC 1752A Class D
- Molex Product Compliance Declaration
- IEC-62474
- chemSHERPA (xml)

Substances of Interest

- PFAS

EU RoHS Certificate of Compliance

Additional Product Compliance Information

Part Details

General

Status	Active
Category	PCB Headers and Receptacles
Series	173083
Description	KK 508 Header, Vertical, with Polarizing Backwall, Tin (Sn) Plating, Glow-Wire Capable, 8 Circuits
Application	Power, Wire-to-Board
Comments	This Molex product is manufactured from material that has the following ratings, tested by independent agencies: a) A Glow Wire Ignition Temperature (GWIT) of at least 775 deg C per IEC 60695-2-13. b) A Glow Wire Flammability Index (GWFI) above 850 deg C per IEC 60695-2-12 and hence complies with the requirements set out in the International Standard IEC

	60335-1 5th edition - household and similar electrical appliances - safety, section 30 Resistance to heat and fire. The customers using this product must determine its suitability for use in their particular application through testing or other acceptable means as described in end-product glow-wire flammability test standard IEC 60695-2-11 and any applicable product end-use standard(s). If it is determined during the customer's evaluation of suitability, that higher performance is required, please contact Molex for possible product options.
Component Type	PCB Header
Product Name	KK 508
UPC	889056317283

Agency

UL	E29179
----	--------

Electrical

Current - Maximum per Contact	7.0A
Voltage - Maximum	250V

Physical

Breakaway	No
Circuits (Loaded)	8
Circuits (maximum)	8
Color - Resin	Natural
Durability (mating cycles max)	25
First Mate / Last Break	No
Flammability	94V-2
Glow-Wire Capable	Yes

Guide to Mating Part	No
Keying to Mating Part	No
Lock to Mating Part	Yes
Material - Metal	Brass
Material - Plating Mating	Tin
Material - Plating Termination	Tin
Material - Resin	Nylon
Net Weight	2.243/g
Number of Rows	1
Orientation	Vertical
Packaging Type	Bag
PCB Retention	No
PCB Thickness - Recommended	1.60mm
PC Tail Length	4.44mm
Pitch - Mating Interface	5.08mm
Pitch - Termination Interface	5.08mm
Plating min - Mating	2.500µm
Plating min - Termination	2.500µm
Polarized to Mating Part	Yes
Polarized to PCB	No
Shrouded	Partially Shrouded
Stackable	Yes
Temperature Range - Operating	-40° to +80°C
Termination Interface Style	Through Hole

Solder Process Data

Lead-Free Process Capability	N/A
------------------------------	-----

Mates With / Use With

Mates with Part(s)

Description	Part Number
5.08mm Pitch KK Crimp Housings	<u>91813</u>