



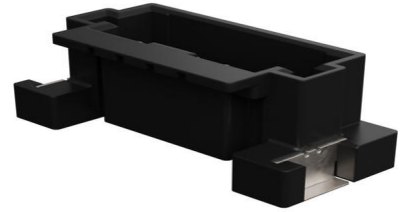
Part Number : [5600200621](#)

Product Description : DuraClik Wire-to-Board Header, Single Row, Vertical, 6 Circuits, Tin (Sn) Plating, Black

Series Number : 560020

Status : Active

Product Category : PCB Headers and Receptacles



Documents and Resources

Drawings

[5600200621_sd.pdf](#)

3D Models and Design Files

[STEP AP242](#)

[SOLIDWORKS](#)

[Creo](#)


[Symbol and Footprint \(Multi-Format\)](#)

Specifications

[PK-560020-002-JP-001.pdf](#)

Product Environment Compliance

Compliance

| | |
|--------------------|---|
| GADSL/IMDS | Compliant with Exemption 44; 33 |
| China RoHS |  per SJ/T 11365-2006 |
| EU ELV | Compliant per 2000/53/EC |
| Low-Halogen Status | Not Low-Halogen per IEC 61249-2-21 |
| REACH SVHC | Not Contained per D(2025)7771-DC (04 Feb 2026) |
| EU RoHS | Compliant per EU 2015/863 |

Compliance Statements

- EU RoHS

- REACH SVHC
- Low-Halogen

Industry Documents

- IPC 1752A Class C
- IPC 1752A Class D
- Molex Product Compliance Declaration
- IEC-62474
- chemSHERPA (xml)

Substances of Interest

- PFAS

EU RoHS Certificate of Compliance

Additional Product Compliance Information

Part Details

General

| | |
|----------------|--|
| Status | Active |
| Category | PCB Headers and Receptacles |
| Series | 560020 |
| Description | DuraClik Wire-to-Board Header, Single Row, Vertical, 6 Circuits, Tin (Sn) Plating, Black |
| Application | Automotive, Signal, Wire-to-Board |
| Comments | The Operating Temperature Range when used with DuraClik series 502351 is -40°C to +105°C. It is -40°C to 125°C when used with DuraClik ISL series 560123 or TPA series 505151. |
| Component Type | PCB Header |
| Product Name | DuraClik |
| UPC | 889056679862 |

Agency

| | |
|----|--------|
| UL | E29179 |
|----|--------|

Electrical

| | |
|-------------------------------|------------------|
| Current - Maximum per Contact | 3.0A |
| Voltage - Maximum | 125V AC (RMS)/DC |

Physical

| | |
|--------------------------------|--------------------------------|
| Breakaway | No |
| Circuits (Loaded) | 6 |
| Circuits (maximum) | 6 |
| Color - Resin | Black |
| Durability (mating cycles max) | 30 |
| First Mate / Last Break | No |
| Glow-Wire Capable | No |
| Keying to Mating Part | No |
| Lock to Mating Part | Yes |
| Material - Metal | Copper Alloy |
| Material - Plating Mating | Tin |
| Material - Resin | Polyamide (PA) |
| Net Weight | 0.836/g |
| Number of Rows | 1 |
| Orientation | Vertical |
| Packaging Type | Embossed Tape on Reel |
| PCB Locator | No |
| PCB Retention | Yes |
| Pitch - Mating Interface | 2.00mm |
| Pitch - Termination Interface | 2.00mm |
| Polarized to Mating Part | Yes |
| Polarized to PCB | Yes |
| Stackable | No |
| Temperature Range - Operating | -40° to +105°C, -40° to +125°C |
| Termination Interface Style | Surface Mount |

Mates With / Use With

Mates with Part(s)

| Description | Part Number |
|---|---------------|
| DuraClik Single Row Receptacle Housings | <u>502351</u> |
| DuraClik TPA Single Row Receptacle Housings | <u>505151</u> |

| | |
|--|---------------|
| DuraClik ISL Single Row Receptacle Housings | <u>560123</u> |
|--|---------------|

This document was generated on Apr 28, 2026