

DLW32PH122XK2#

“#” at the end indicates the package specification code.



< List of part numbers with package codes >

DLW32PH122XK2B DLW32PH122XK2L

Applications

| | |
|--------------------------|----------------------------------------------------------------------------------------------------------------------------------------------------------------------------------------------------------------------------------------------------------------------------------------------------------------------------------------------------------------------------------------------------------------------------------------|
| Unsuitable Applications | Please be sure to read and comply with these "Precautions for use." |
| Specific Applications | Automotive powertrain/safety equipment, Automotive infotainment/comfort equipment, Medical equipment [GHTF A/B/C] except for implant & surgery & auto injector Please refer to Our Website and specifications, etc. for information about the performance, functions, quality, management, and safety required for the above applications, and use Products after confirming the performance and reliability of the actual Product. |
| Recommended Applications | Automotive powertrain/safety equipment |

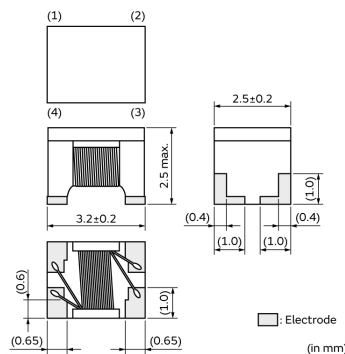
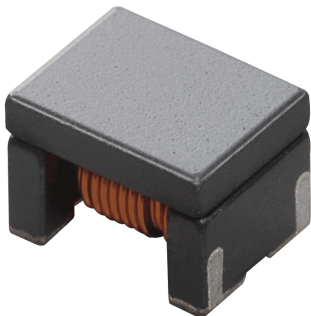
Packaging Information

| Packaging | Specifications | Standard Packing Quantity |
|-----------|---------------------|---------------------------|
| B | Bulk(Bag) | 500 |
| L | 180mm Embossed Tape | 1500 |

Features

1. It realizes high impedance characteristics at several tens of MHz to several GHz and is suitable for wideband common mode noise removal.
2. Low DC Resistance and a large Rated Current are suitable for common mode noise suppression of the power line.

Appearance & Shape



Attention

1. This datasheet is downloaded from the website of Murata Manufacturing Co., Ltd. Therefore, its specifications are subject to change or our products in it may be discontinued without advance notice. Please check with our sales representatives or product engineers before ordering.
2. This datasheet has only typical specifications because there is no space for detailed specifications.
Therefore, please review our product specifications or consult the approval sheet for product specifications before ordering.

DLW32PH122XK2#

“#” at the end indicates the package specification code.



Specifications

| | |
|---------------------------------------------|----------------------------------------------------------------------|
| Shape | SMD |
| Size Code (in mm) | 3225 |
| Size Code (in inch) | 1210 |
| Length | 3.2mm |
| Length Tolerance | ±0.2mm |
| Width | 2.5mm |
| Width Tolerance | ±0.2mm |
| Thickness | 2.5mm |
| Thickness Tolerance | max. |
| Common Mode Impedance (at 1GHz) | 900Ω |
| Common Mode Impedance (at 1GHz) Tolerance | (Typ.) |
| Common Mode Impedance (at 100MHz) | 1200Ω |
| Common Mode Impedance (at 100MHz) Tolerance | ±20% |
| Rated Current | 1200mA |
| Derating of Rated Current | Yes (Over 105°C) *For details, please check the derating diagram. |
| Rated Voltage | 60Vdc |
| Withstanding Voltage | 150Vdc |
| DC Resistance(max.) | 0.06Ω |
| DC Resistance | 0.05Ω±20% |
| Insulation Resistance(min.) | 10MΩ |
| Operating Temperature Range | -40°C to 125°C |
| Mass(typ.) | 0.073g |

| | |
|----------------------------------------------------------------|--------|
| Number of Circuit | 1 |
| Operating Temperature Range(Self-temperature rise is included) | No |
| Brand | Murata |

Attention

1.This datasheet is downloaded from the website of Murata Manufacturing Co., Ltd. Therefore, it's specifications are subject to change or our products in it may be discontinued without advance notice. Please check with our sales representatives or product engineers before ordering.

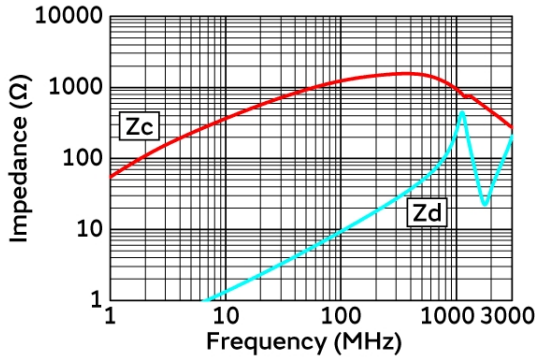
2.This datasheet has only typical specifications because there is no space for detailed specifications.

Therefore, please review our product specifications or consult the approval sheet for product specifications before ordering.

DLW32PH122XK2#

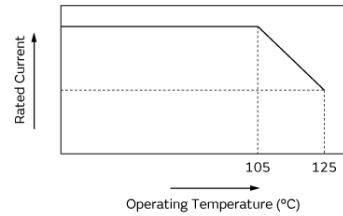
“#” at the end indicates the package specification code.

Product Data



In operating temperature exceeding +105°C, derating of current is necessary for this series.
Please apply the derating curve shown in chart according to the operating temperature.

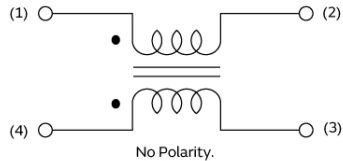
Derating of Rated Current



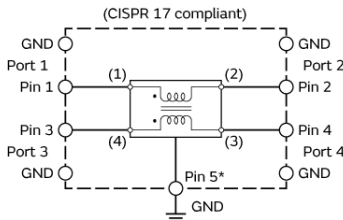
Impedance-Frequency Characteristics

Derating of Rated Current

Equivalent Circuit (Note 1)



Note1: The Port/Pin No. of the Simulation Model provided by our company is as follows.



S-parameter: Port □
SPICE model: Pin □ (Pin5* connect to GND)

Equivalent Circuit

Attention

1. This datasheet is downloaded from the website of Murata Manufacturing Co., Ltd. Therefore, its specifications are subject to change or our products in it may be discontinued without advance notice. Please check with our sales representatives or product engineers before ordering.
2. This datasheet has only typical specifications because there is no space for detailed specifications.
Therefore, please review our product specifications or consult the approval sheet for product specifications before ordering.