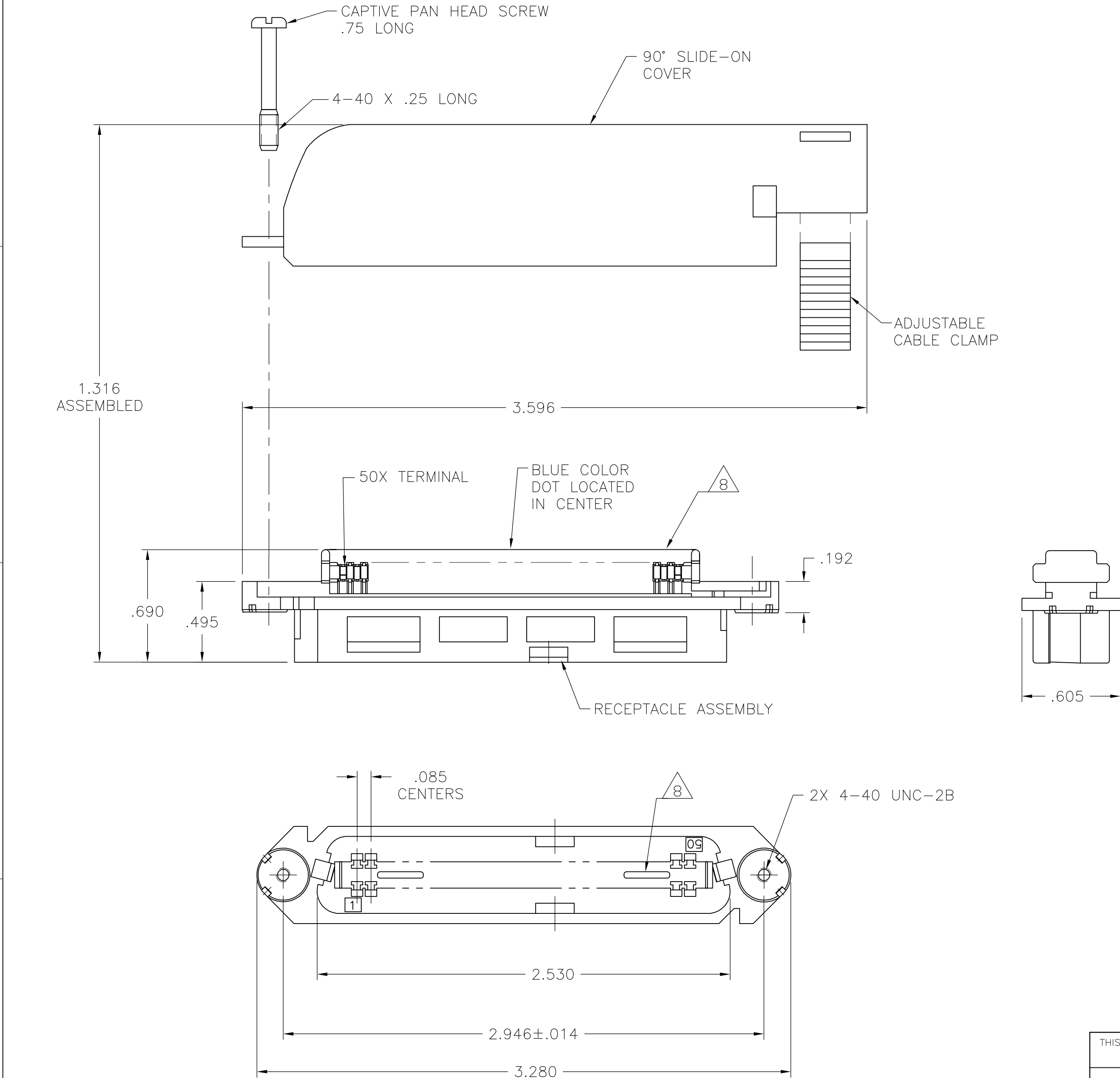


THIS DRAWING IS UNPUBLISHED.





RELEASED FOR PUBLICATION

© COPYRIGHT - BY TYCO ELECTRONICS CORPORATION. ALL RIGHTS RESERVED.

LOC	DIST	REVISIONS			
		P	LTR	DATE	DWN APVD
GP	00		B	REVISED PER ECO-08-007327	02OCT08 BM WM



1. THE CONTACT SURFACES OF THE TERMINALS ARE COATED WITH LUBRICANT.
2. ALL DIMENSIONS ARE MAXIMUM UNLESS OTHERWISE SPECIFIED.
3. MATERIAL:
HOUSING, COVER, AND CABLE CLAMP: POLYPHENYLENE OXIDE GRAY.
TERMINAL: HIGH STRENGTH COPPER ALLOY PLATED WITH .000030 MIN GOLD OR GOLD FLASH OVER PALLADIUM NICKEL PLATE, .000030 MIN TOTAL ON MATING SURFACES. .000050 MIN NICKEL UNDERPLATE ON ENTIRE TERMINAL.
4. COVER, SCREW & CABLE CLAMP SHIPPED UNASSEMBLED.
5. WIRE SIZE: 24-26 AWG SOLID 7 OR 24 AWG STRANDED COPPER CONDUCTORS, MAXIMUM INSULATION DIAMETER OF .045 IS ACCEPTABLE FOR MOST APPLICATIONS.
6. CABLE RANGE: .425 DIAMETER MAX.
7. 500 KITS BULK PACKAGED.
8. CORING IS AN OPTIONAL CONFIGURATION AND IS AT THE DISCRETION OF AMP.

THIS DRAWING IS A CONTROLLED DOCUMENT.			DWN B. MCMASTER 27OCT05		<div>Tyco Electronics Corporation Harrisburg, PA 17105-3608</div>			
			CHK W. MILLHIMES 27OCT05					
DIMENSIONS: INCHES		TOLERANCES UNLESS OTHERWISE SPECIFIED:		APVD W. MILLHIMES 27OCT05		NAME		
		0 PLC ± -		PRODUCT SPEC		RECEPTACLE KIT, 50 POSITION, B-SLOT, WITH 90 DEGREE COVER AND SCREW, CHAMP-LOK		
		1 PLC ± -		—				
		2 PLC ± -		APPLICATION SPEC				
		3 PLC ± -		—				
4 PLC ± -		ANGLES ± -		SIZE		CAGE CODE		
MATERIAL		FINISH		WEIGHT		DRAWING NO		
				—		A2 00779 C-5556006		
CUSTOMER DRAWING						RESTRICTED TO		
						—		
SCALE 2:1						SHEET 1 of 1		
						REV B		