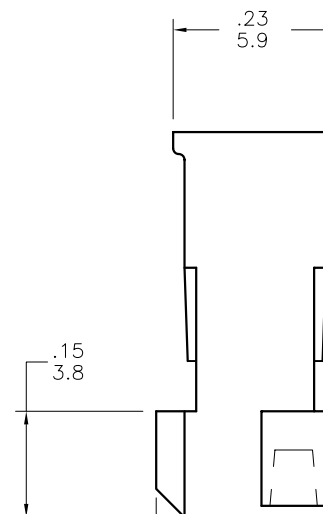
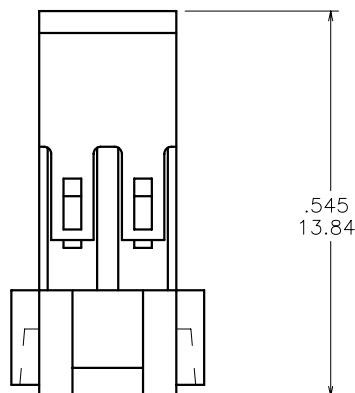


PRODUCT NUMBER	COLOR
78583-001	BLACK
78583-001LF	BLACK
78583-002	BLUE

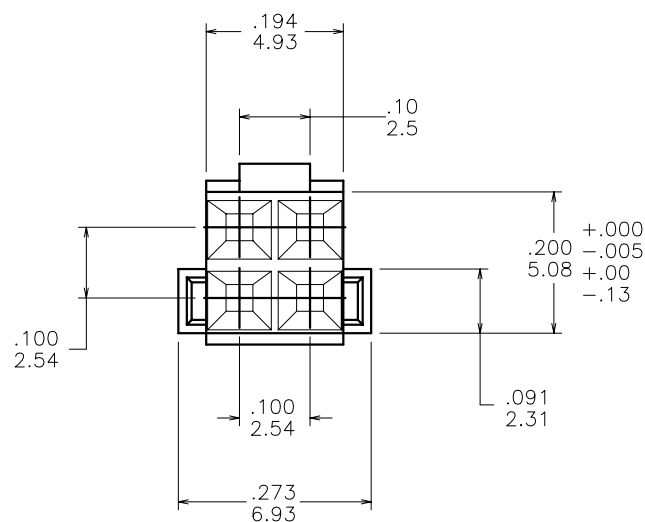
OBSOLETE

OBSOLETE

.04 X 45° CHAMFER  
1.0

## NOTES:

- MOLDING MATERIAL: POLYETHYLENE ETHER, COLOR: BLACK, UL 94V-0; BLUE, UL94-V-1.
- TO BE MATED WITH PIN .225±.015/5.72±.38 LONG.
- THIS HOUSING IS INTENDED FOR USE WITH MINI PV™ TERMINAL WITH 22-36 AWG WIRE.
- FOR APPLICATION INFORMATION SEE TA-531. PRODUCT SPECIFICATION: BUS-12-067.
- PRODUCT MEETS EUROPEAN UNION DIRECTIVES AND OTHER COUNTRY REGULATIONS AS DESCRIBED IN GS-22-008.
- THIS PRODUCT IS NOT INTENDED TO BE EXPOSED TO MANUFACTURING SOLDER PROCESSES.



mat'l. code	surface	tolerance	projection	product family
SEE NOTE 1	✓			PV HOUSINGS
ltr	ec'n no	dr	date	tolerances unless otherwise specified
J	v07-0534	HTB	2007-08-22	angles
-	-	-	-	linear
D	v91203	BKB	1999-06-25	0°±2'
E	v03-1362	PJ	2004-02-19	dr
F	v05-0488	HTB	2006-05-24	engr
G	v05-0717	TAB	2005-07-29	chr
H	v06-0447	HTB	2006-05-16	appd
sheet	revision	J		
index	sheet	1		



title  
MINI LATCH HOUSING  
DOUBLE ROW POLARIZED 2X2

dwg no  
78583

sheet 1 of 1  
size  
A3

type  
Product Customer Drawing