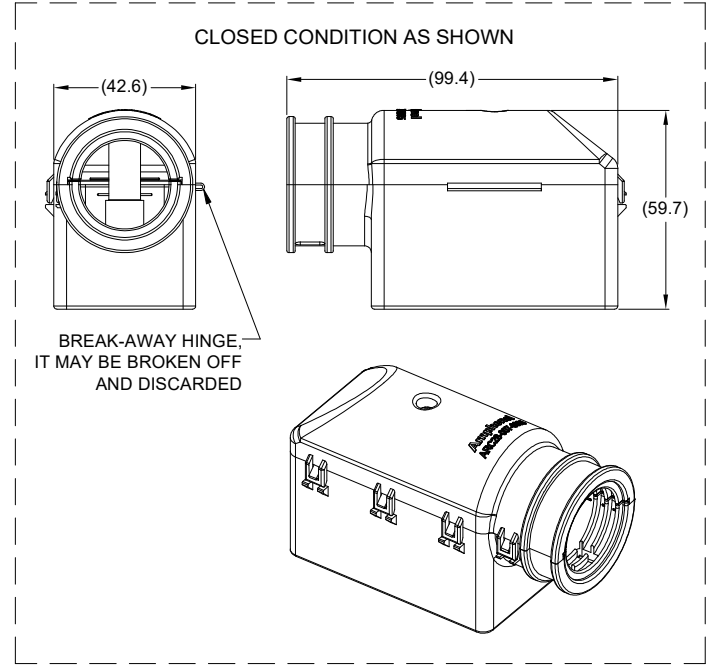
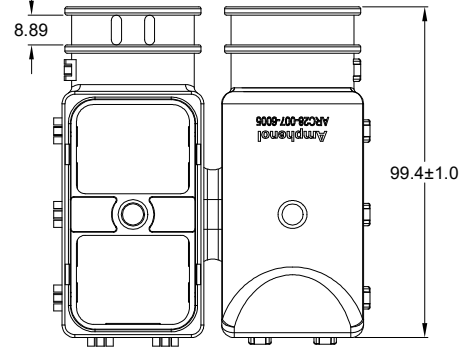
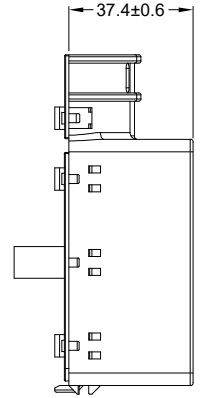
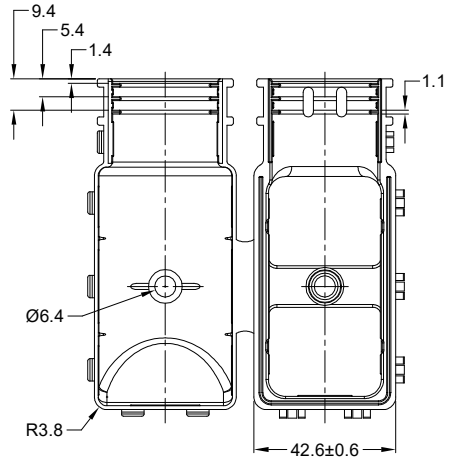
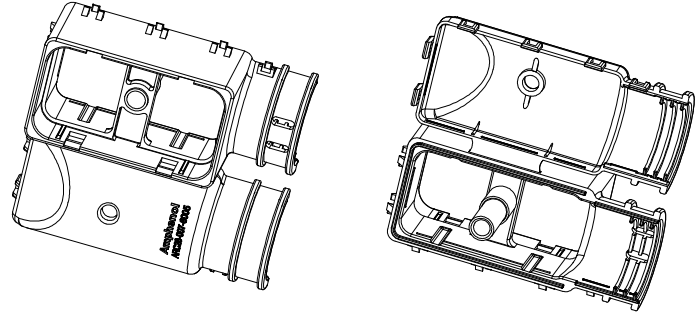
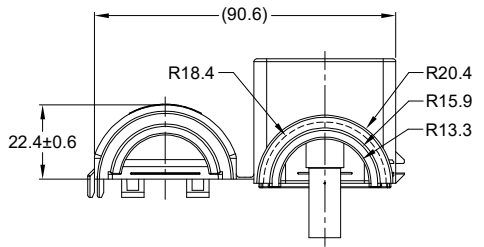


REVISIONS					
REV	ECO	DESCRIPTION	DATE	BY	APPR
A1	-	RELEASE DRAWING	30/JUL/25	KELIN	TOMMY



NOTES: UNLESS OTHERWISE SPECIFIED

1. MATERIAL: THERMOPLASTIC; COLOR: BLACK.
2. THIS PART SNAPS ONTO ARC26-60S\* (\*= 01,04,05,06,07).
3. RECOMMENDED CONVOLUTE TUBING SIZE: SAE AMS-T-81914-10 OR NW26. (ID=Ø25.4MM, OD=Ø31.75MM, TATED AT125°C )
4. RoHS COMPLIANT
5. ALL DIMENSIONS ARE FOR REFERENCE USE ONLY.

QUANTITY	ARC28-007-6005	REF:0528-007-6005	ITEM
QUANTITY	PART NUMBER	DESCRIPTION	ITEM
		90° BACKSHEL FOR 60 PIN PLUG,HORIZONTAL SIZE 20 CNT,ARC SERIES,BLACK	
<b>MATERIALS LIST</b>			
<b>UNLESS OTHERWISE SPECIFIED</b> 1) All dimensions are in metric(mm). 2) Tolerances are as follows: 1 PL DEC ±0.30 Fractions ±1/64 2 PL DEC ±0.15 Angles ±1° 3 PL DEC ±0.08 3) Note reference =		<b>SIGNATURES</b> DRAWN: <b>KELIN</b> CHECKED: <b>SULLEN</b> ENGINEER: APPROVAL: <b>TOMMY</b>	<b>DATE</b> 28/JUL/25 29/JUL/25 30/JUL/25
<b>MATERIAL SPECIFICATIONS:</b> WEIGHT:51.4g		<b>CUSTOMER:</b> THIS DRAWING IS SUPPLIED FOR INFORMATION ONLY. DESIGN FEATURES, SPECIFICATIONS AND PERFORMANCE DATA SHOWN HEREON ARE THE PROPERTY OF THE AMPHENOL CORPORATION. NO RIGHTS OF REPRODUCTION ARE IMPLIED. ALL DIMENSIONS ARE SUBJECT TO NORMAL MANUFACTURING VARIATIONS.	
<b>PROCESS SPECIFICATIONS:</b>		<b>SIZE</b> TYPE DWG NO: <b>ARC28-007-6005</b> <b>REVISION</b> <b>A1</b>	
<b>NEXT ASSY:</b>		SCALE: NONE SHEET 1 OF 1	

TITLE: 90° BACKSHEL FOR 60 PIN PLUG,HORIZONTAL SIZE 20 CNT,ARC SERIES,BLACK DWG NO: ARC28-007-6005 REV: A1 SH: 1 OF: 1