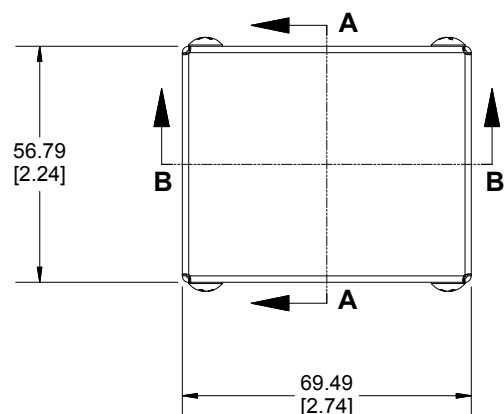
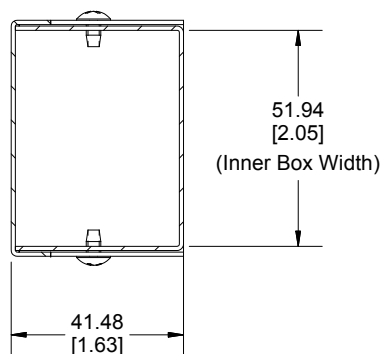


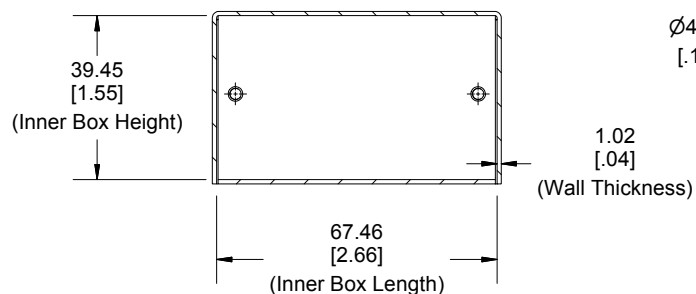
Top View of Assembly



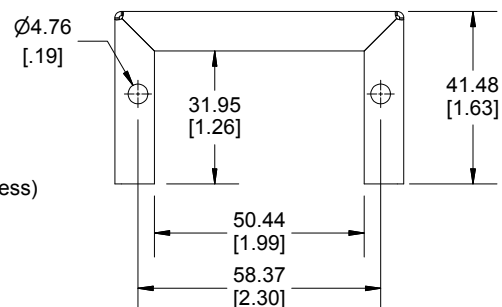
**SECTION A-A
End View of Assembly**



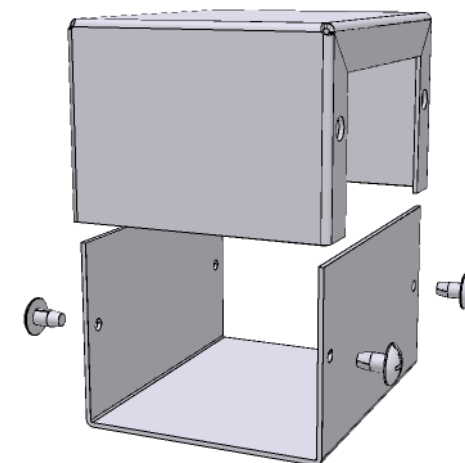
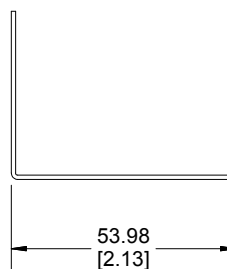
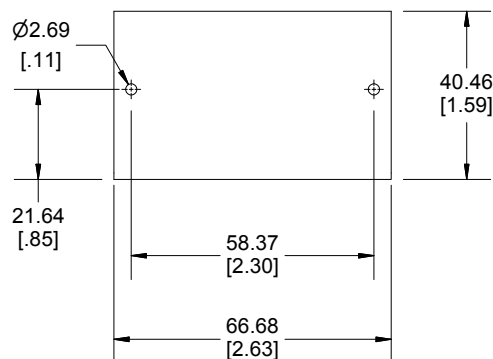
**SECTION B-B
Side View of Assembly**



Cover



Bottom



Enclosures can be Factory Modified (Milling, Drilling, Printing etc.)
Contact Factory mjm@hammondmg.com for quotes
Solid models of this enclosure available in STEP or IGES.

NOTE

Purchased assembly includes bottom, cover and 4 cover screws.
Bottom and cover are made from 0.04" Aluminum.

PART NUMBERS

1411B Enclosure

Natural Finish Enclosure

1411BU

ASA 61 Grey Enclosure

1411B

ACCESSORIES

Plated Cover Screws (Pkg 6)

1421J6

[6-32 x 1/4" Self-Tapping Screws]

Dimensions:
mm
[inches]



**HAMMOND
MANUFACTURING™**

1411B

www.hammondmg.com