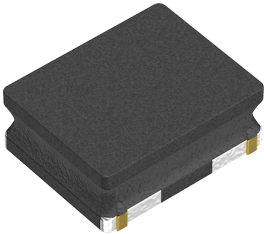


| | |
|--------------------------|--|
| Product Status | Obsolete |
| | Recommended Alternate Part No. : VLS252010HBX-1R0M-1 (Interchangeability is not guaranteed.) |
| | Discontinue Issue Date : Dec.3, 2019 |
| | Last Purchase Order Date : Sep.30, 2021 |
| | Last Shipment Date : Mar.31, 2022 |
| Applications | Commercial Grade |
| Feature | Wire WoundWire Wound |
| | ShieldMagnetic Shield |
| | Metal CoreMetal Core |
| Series Type | VLS-HBX |
| Brand | TDK |
| Environmental Compliance | <div><div>RoHS</div><div>REACH</div><div>Halogen Free</div><div>Lead Free</div></div> |



| Size | |
|------------------------------|----------------|
| Length(L) | 2.50mm ±0.20mm |
| Width(W) | 2.00mm ±0.20mm |
| Thickness Height | 1.00mm Max. |
| Recommended Land Pattern (A) | 0.60mm Nom. |
| Recommended Land Pattern (B) | 1.30mm Nom. |
| Recommended Land Pattern (C) | 2.00mm Nom. |

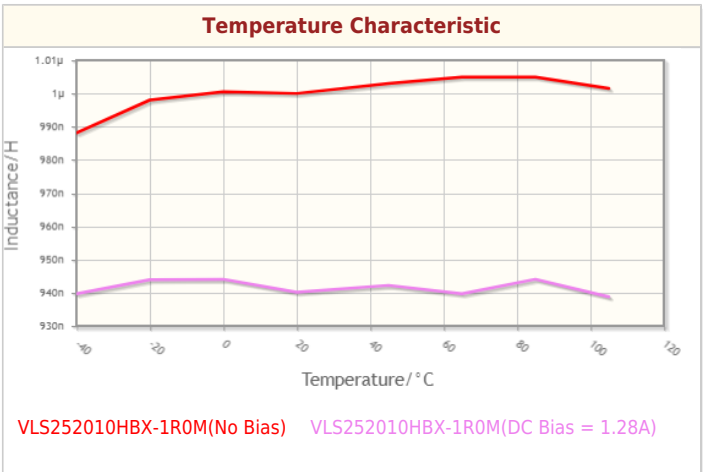
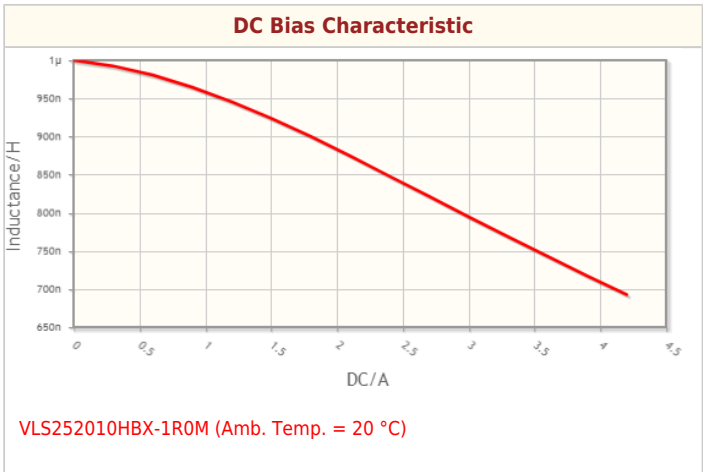
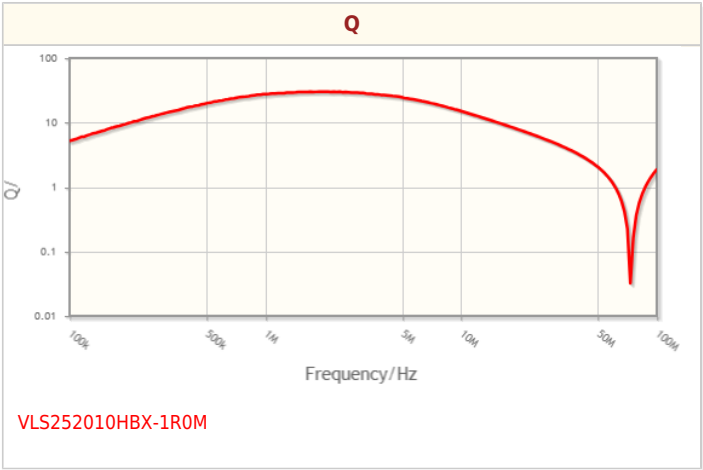
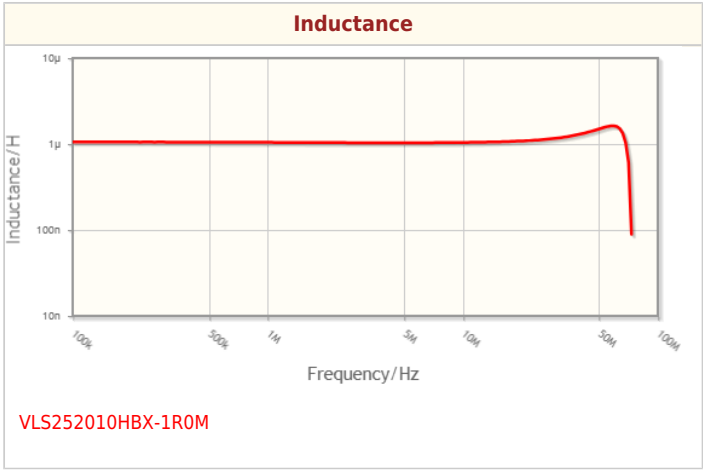
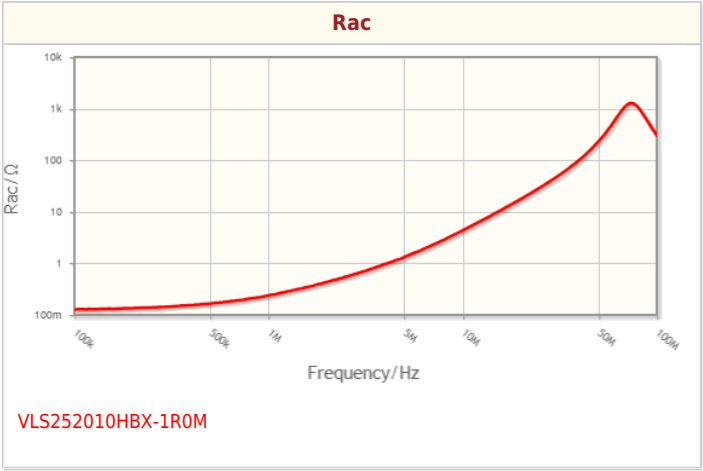
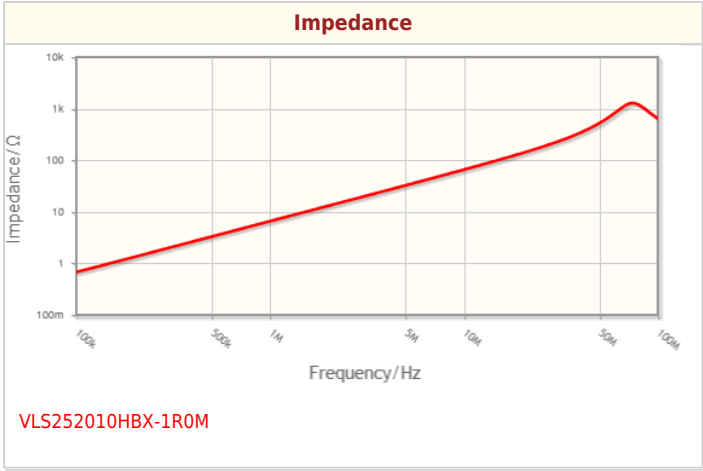
| Electrical Characteristics | |
|---|-------------------|
| Inductance | 1μH ±20% at 1MHz |
| Rated Current (L Change) [Typ.] | 3.57A (30% Down) |
| Rated Current (L Change) [Max.] | 3.22A (30% Down) |
| Rated Current (Temperature Rise) [Typ.] | 3A (40°C Rise) |
| Rated Current (Temperature Rise) [Max.] | 2.55A (40°C Rise) |
| DC Resistance [Typ.] | 54mΩ |
| DC Resistance [Max.] | 65mΩ |
| Rated Voltage [Max.] | |
| Self Resonant Frequency [Min.] | |
| Self Resonant Frequency [Typ.] | |
| Q [Min.] | |
| Q [Typ.] | |

| Other | |
|-----------------------|--|
| Operating Temp. Range | -40 to 105°C (Including Self-Temp. Rise) |

! Images are for reference only and show exemplary products.
! This PDF document was created based on the data listed on the TDK Corporation website.
! All specifications are subject to change without notice.

| | |
|------------------|---|
| Soldering Method | Reflow |
| AEC-Q200 | NO |
| Packing | Embossed (Plastic)Taping [180mm Reel, Tape width 8mm] |
| Package Quantity | 2000pcs |
| Weight | 0.026g |

Characteristic Graphs(This is reference data, and does not guarantee the products characteristics.)



Associated Images

