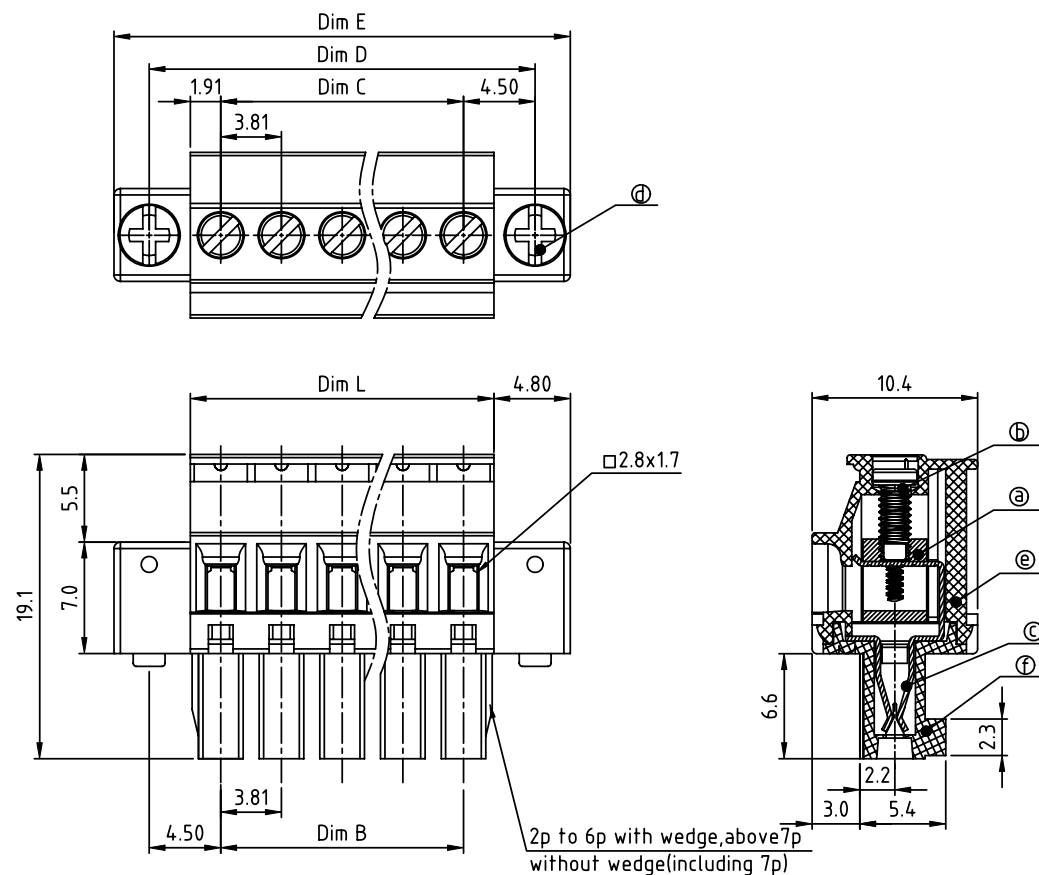


PRODUCT NUMBER	PITCH
TSxx31xD00J0G	3.81 mm



Material

- Item ① Clamp: Brass (CuZn) Ni plated
- Item ② Terminal screw: Steel Zinc plating "-" slot type
- Item ③ Female contact: PhBz Tin plated
- Item ④ With flange screw: Steel Zinc plating M2.5 "+/-" combination type
- Item ⑤ Top body: Thermoplastic (UL94V-0)
- Item ⑥ Bottom body: Thermoplastic (UL94V-0)

Electrical cULus/VDE

- Voltage rating: 300VAC/300VAC
- Current rating: 8A/10A
- Wire range: 1.5mm²
- Solid wire (AWG): 16-28
- Stranded wire (AWG): 16-28
- Torque: 1.7Lb-In./0.2Nm
- Screw: M2
- Wire strip length: 6-7mm
- Withstanding Voltage: 1.6KV/2.5KV
- Operating temperature: -40°C to +115°C
- Safety approval: cULus VDE

DIMENSION




N = Number of poles

Dim L	NX3.81
Dim B	(N-1)X3.81
Dim C	(N-1)X3.81
Dim D	(N-1)X3.81+9.0
Dim E	(N-1)X3.81+13.4

Poles	Tolerance
2p-6p	±0.15
7p-12p	±0.20
13p-16p	±0.25
17p-24p	±0.30

PART NO.: TS xx 31 x D 00J0 G

Solid block	No. of poles	Color	RoHS compliant
0	2	Black (RAL9005)	(lead<4%)
02	2 poles	Red (RAL3001/D)	In copper Alloy
03	3 poles	Orange (RAL2011/P)	
...	...	4 Yellow (RAL1018/A)	
24	24 poles	5 Green (RAL6018/T)	
		6 Blue (RAL5015/A)	
		8 Grey (RAL7035/D)	
		9 White (RAL1102)	
		C Green (RAL6018/U)	

mat'l. code				surface ASME Y14.5 ✓		tolerance ASME Y14.5		projection 		product family TERMINAL BLOCK																	
ltr ecn no dr date				tolerances unless otherwise specified								title TERMINAL BLOCK															
				angles		X.±0.5		scale		PLUGGABLE PLUG,HOOK ON BACK SIDE,WITH FLANGE																	
				0.1°		X.X±0.3																					
				X'±1°		X.XX±0.1																					
				dr		EVIN ZHONG		041914				dwg no				sheet 1 of 1				size							
				engr		EVIN ZHONG		041914				TSxx31xD00J0G				A											
				chr		HANKE FENG		041914																			
				appd		SHI JUN		041914																			
sheet index		revision sheet		A 1																							