

SPECIFICATIONS:

MATERIALS:

SHELL: NICKEL OR TIN PLATED STEEL
 INSULATOR: PBT +30% GF, UL 94V-0, BLACK
 CONTACTS: COPPER ALLOY, GOLD PLATED

ELECTRICALS:

CURRENT RATING: 5 AMPS
 CONTACT RESISTANCE: 15 mOHMS MAX
 INSULATOR RESISTANCE: 1000 MOHMS MIN
 VOLTAGE: 500V AC FOR 1 MINUTE
 WORKING VOLTAGE: 250 VAC
 TEMPERATURE: -50°C TO +100°C

171-YYY-10YLYY1

SERIES _____
 POSITIONS _____
 009 _____
 015 _____
 025 _____
 037 _____
 050 _____
 GENDER _____
 1 = MALE
 TERMINATION _____
 0 = SOLDER CUP
 SHELL PLATING _____
 2 = TIN (DISCONTINUED)
 3 = NICKEL (GROUND INDENTS)
 HARDWARE OPTIONS _____
 00 = NO HARDWARE
 01 = .098" 4-40 CN (SOLDER SIDE)
 02 = .236" 4-40 CN (SOLDER SIDE)
 03 = .236" 4-40 CN (MATING SIDE)
 05 = .237" 4-40 BOARD LOCK (.063" PCB)
 91 = .237" 4-40 JACK SCREW / BOARD LOCK (.063" PCB)
 PLATING OPTIONS _____
 1 = GOLD FLASH
 2 = 30u" GOLD MATING AREA // GF TAILS

| DIMENSIONS (in/mm) | | | | | | |
|--------------------|-------|-------|-------|-------|-------|-------|
| POS. | A | B | C | D | E | F |
| 9 | 1.213 | 0.984 | 0.666 | 0.756 | 0.329 | 0.496 |
| | 30.80 | 24.99 | 16.92 | 19.20 | 8.36 | 12.60 |
| 15 | 1.541 | 1.312 | 0.994 | 1.091 | 0.329 | 0.496 |
| | 39.15 | 33.32 | 25.25 | 27.70 | 8.36 | 12.60 |
| 25 | 2.087 | 1.853 | 1.534 | 1.618 | 0.329 | 0.496 |
| | 53.00 | 47.04 | 38.96 | 41.10 | 8.36 | 12.60 |
| 37 | 2.728 | 2.500 | 2.181 | 2.256 | 0.329 | 0.496 |
| | 69.30 | 63.50 | 55.42 | 57.30 | 8.36 | 12.60 |
| 50 | 2.638 | 2.406 | 2.079 | 2.169 | 0.436 | 0.602 |
| | 67.00 | 61.00 | 52.80 | 55.10 | 11.07 | 15.30 |

WILL ACCEPT 28-20 AWG CONDUCTORS

UNITS = INCHES [MM] DO NOT SCALE FROM DRAWING

RoHS COMPLIANT



THESE DRAWINGS AND SPECIFICATIONS ARE THE PROPERTY OF NorComp AND SHALL NOT BE REPRODUCED, COPIED OR USED AS THE BASIS FOR THE MANUFACTURE OR SALE OF APPARATUS WITHOUT WRITTEN PERMISSION.

DRAWN:
J. KADEL
 DATE:
07/24/2018

NorComp

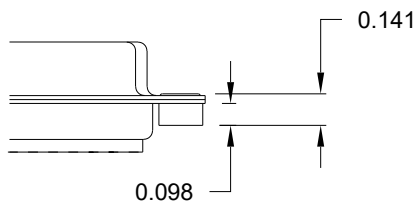
SCALE: NTS SHEET 1 OF 2 REV 16

DWG NO. **171-YYY-10YLYY1**

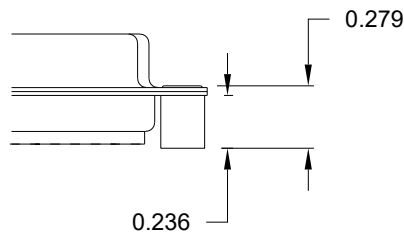
TOLERANCE:
ALL DIMENSIONS ARE ± 0.010

ALL CLINCH-NUTS ARE 4-40 INTERNAL THREADS

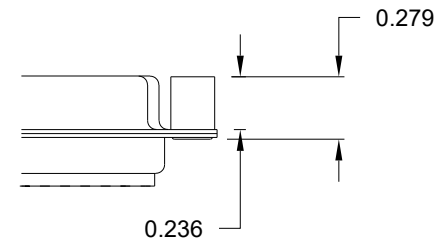
01 0.098" (SOLDER SIDE)



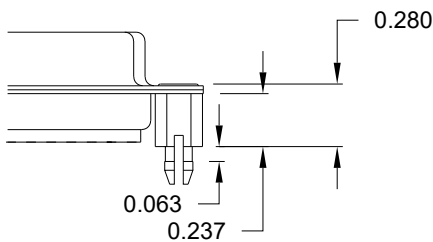
02 0.236" (SOLDER SIDE)



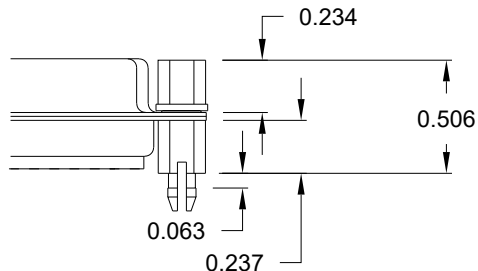
03 0.236" (MATING SIDE)



05 0.237" (SOLDER SIDE)



91 0.237" (SOLDER SIDE)



NOTE: 4-40 FEMALE SCREW LOCK IS REMOVABLE

RoHS COMPLIANT

UNITS = INCHES

DO NOT SCALE FROM DRAWING



THESE DRAWINGS AND SPECIFICATIONS ARE THE PROPERTY OF NorComp AND SHALL NOT BE REPRODUCED, COPIED OR USED AS THE BASIS FOR THE MANUFACTURE OR SALE OF APPARATUS WITHOUT WRITTEN PERMISSION.

DRAWN:

J. KADEL

DATE:

07/24/2018

NorComp

SCALE:

NTS

SHEET

OF

2

2

REV

16

DWG NO.

171-YYY-10YLYY1