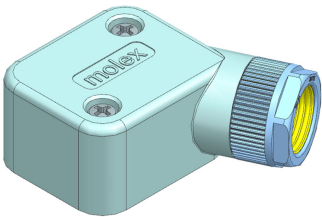




Part Number : [2077521002](#)  
Product Description : Stacked SMEC  
Receptacle Upper Connector Kit, Single Type,  
Short Screw  
Series Number : 207752  
Status : Active  
Product Category : Connector Housings



## Documents & Resources

Drawings  
[2077521002\\_sd.pdf](#)


3D Models and Design Files  
[2077521002\\_stp.zip](#)

Specifications  
[2077520000-AS-001.pdf](#)  
[2077529200-SPK-201.pdf](#)  
[2092170000-PS-001.pdf](#)

Tooling Specifications  
[2117393702ATP-E-000.pdf](#)  
[2117425500ATP-000.pdf](#)  
[2117393702ATP-J-000.pdf](#)  
[2117425500ATP-J-000.pdf](#)

## Product Environment Compliance

### Compliance

GADSL/IMDS	Not Relevant
China RoHS	
EU ELV	Not Relevant
Low-Halogen Status	Not Low-Halogen per IEC 61249-2-21
REACH SVHC	Not Contained per D(2024)7663-DC (21 Jan 2025)
EU RoHS	Compliant per EU 2015/863

### [Multiple Part Product Compliance Statements](#)

- Eu RoHS
- REACH SVHC
- Low-Halogen

#### Multiple Part Industry Compliance Documents

- IPC 1752A Class C
- IPC 1752A Class D
- Molex Product Compliance Declaration
- IEC-62474
- chemSHERPA (xml)

#### EU RoHS Certificate of Compliance

---

## Part Details

### General

Status	Active
Category	Connector Housings
Series	207752
Description	Stacked SMEC Receptacle Upper Connector Kit, Single Type, Short Screw
Application	Ground, Power, Sealed, Signal, Wire-to-Wire
Product Name	Stacked SMEC
UPC	195842053113

### Physical

Circuits (maximum)	9
Color - Resin	Black
Gender	Receptacle
Glow-Wire Capable	No
Material - Resin	Synthetic Resin
Net Weight	5168.147/mg
Number of Rows	2
Packaging Type	Carton
Panel Mount	N/A
Pitch - Mating Interface	2.00mm
Temperature Range - Operating	-40° to +105°C

---

## Mates With / Use With

### Mates with Part(s)

Description	Part Number
Mates With	Stacked SMEC Plug Housing Assembly

### Use with Part(s)

Description	Part Number
Stacked SMEC Receptacle Upper Housing Crimp Terminal, Short Type, 26 AWG, Reel	<u>2077525210</u>

---

This document was generated on Apr 26, 2025

---