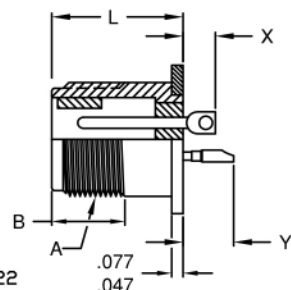
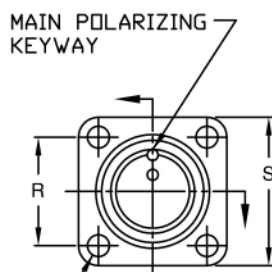


# MINIATURE HERMETIC ELECTRONIC CONNECTORS-DS SERIES

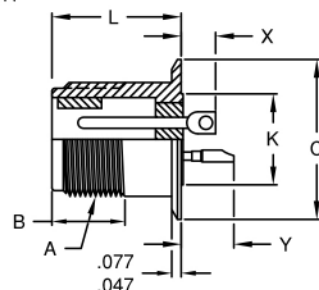
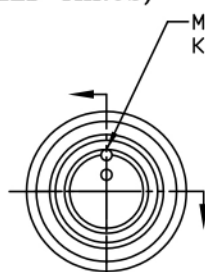
## MIL-DTL-5015 TYPE, COMMERCIAL EQUAL HERMETIC GLASS-TO-METAL SEALED (VACUUM / PRESSURE FEED THRU)



4 HOLES  
.120 $\pm$ .005 - SHELL SIZES 8 THRU 22  
.147 $\pm$ .005 - SHELL SIZE 28

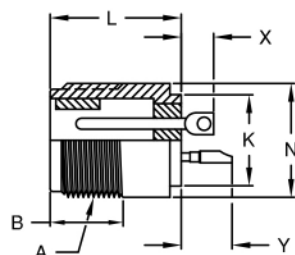
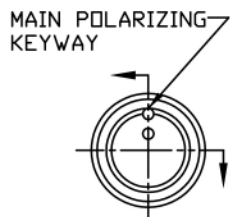
### DS02H - 111 SQUARE FLANGE MOUNT CONNECTORS (MS3142 CLASS H TYPE)

PART NO.	S $\pm$ .031	R T.P. C-C	L MAX.	B MIN. THD.	A THREAD CLASS-2A †
DS02H-10SL-*-111	1.000	.719	.730	.375	.625-24 UNEF
DS02H-12S-*-111	1.094	.812	.730	.375	.750-20 UNEF
DS02H-14S-*-111	1.188	.906	.730	.375	.875-20 UNEF
DS02H-16S-*-111	1.281	.969	.730	.375	1.000-20 UNEF
DS02H-18-*-111	1.375	1.062	.915	.625	1.125-18 UNEF
DS02H-20-*-111	1.500	1.156	.915	.625	1.250-18 UNEF
DS02H-22-*-111	1.625	1.250	.915	.625	1.375-18 UNEF
DS02H-28-*-111	2.000	1.562	.915	.625	1.750-18 UNS
CONTACT SIZE 16		X MAX. .219		Y MAX. .375	



### DS02H - 251 ROUND FLANGE MOUNT CONNECTORS (MIS3143 CLASS H TYPE)

PART NO.	K $\pm$ .010	C $\pm$ .010	L MAX.	B MIN. THD.	A THREAD CLASS-2A †
DS02H-10SL-*-251	.490	.875	.730	.375	.625-24 UNEF
DS02H-12S-*-251	.646	1.000	.730	.375	.750-20 UNEF
DS02H-14S-*-251	.709	1.125	.730	.375	.875-20 UNEF
DS02H-16S-*-251	.834	1.250	.730	.375	1.000-20 UNEF
DS02H-18-*-251	.959	1.375	.915	.625	1.125-18 UNEF
DS02H-20-*-251	1.146	1.500	.915	.625	1.250-18 UNEF
DS02H-22-*-251	1.240	1.625	.915	.625	1.375-18 UNEF
DS02H-28-*-251	1.615	2.000	.915	.625	1.750-18 UNS
CONTACT SIZE 16		X MAX. .219		Y MAX. .375	



### DS02H - 001 FLANGELESS MOUNT CONNECTORS

PART NO.	K $\pm$ .010	N +.000 -.062	L MAX.	B MIN. THD.	A THREAD CLASS-2A †
DS02H-10SL-*-001	.490	.656	.730	.375	.625-24 UNEF
DS02H-12S-*-001	.646	.782	.730	.375	.750-20 UNEF
DS02H-14S-*-001	.709	.906	.730	.375	.875-20 UNEF
DS02H-16S-*-001	.834	1.032	.730	.375	1.000-20 UNEF
DS02H-18-*-001	.959	1.156	.915	.625	1.125-18 UNEF
DS02H-20-*-001	1.146	1.282	.915	.625	1.250-18 UNEF
DS02H-22-*-001	1.240	1.406	.915	.625	1.375-18 UNEF
DS02H-28-*-001	1.615	1.782	.915	.625	1.750-18 UNS
CONTACT SIZE 16		X MAX. .219		Y MAX. .375	

\* ADD DESIRED INSERT ARRANGEMENT.

▼ INSERT ARRANGEMENT IS SHOWN IN NORMAL POSITION.

† AFTER PLATING, SUBJECT TO ACCEPTANCE USING A BASIC CLASS 3A GO GAGE.

OTHER SHELL SIZES, PIN PATTERNS AND INSERT POSITIONS MAY BE AVAILABLE - CONSULT FACTORY.

MATERIAL: STANDARD IS CRS SHELL, 52 NICKEL ALLOY PINS AND NO INTERFACIAL SEAL.

STANDARD PIN IS EYELET TYPE. OTHER PIN TYPES ALSO AVAILABLE

(SOLDER CUP, STRAIGHT, THERMOCOUPLE) - CONSULT FACTORY.

STANDARD FINISH IS TIN PLATED SHELL AND PINS.

OTHER FINISHES ALSO AVAILABLE (GOLD, NICKEL, OLIVE DRAB, etc.) - CONSULT FACTORY.

SPECIALS CAN BE SUPPLIED TO MEET CUSTOMER SPECIFICATIONS - CONSULT FACTORY.

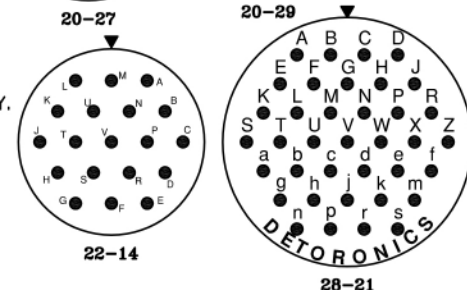
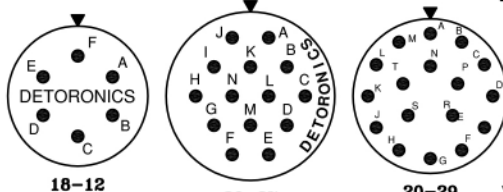
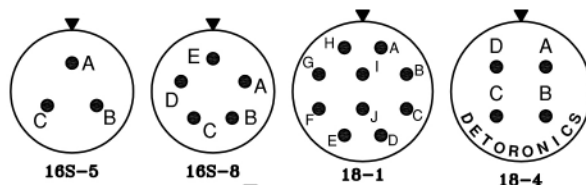
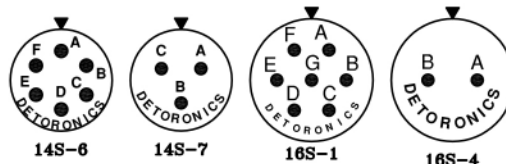
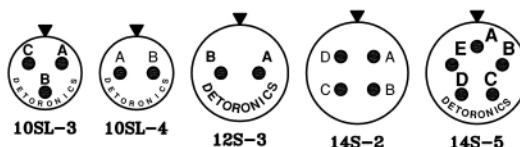
OUR CONNECTORS MATE WITH ANY PLUG WITH SOCKET CONTACTS WHICH MEET THE DIMENSIONAL REQUIREMENTS OF MIL-DTL-5015 AND MS3106.

#### GENERAL SPECIFICATIONS

AIR LEAKAGE: 1x10<sup>-6</sup> CM<sup>3</sup>/SEC AT 15psi

INSULATION RESISTANCE: 5,000 megohms AT 500VDC

OPERATING TEMPERATURE: -67°F TO +347°F (-55°C TO +175°C)



#### ENGAGING FACE PIN INSERTS

#### Detoronic Corporation

13071 ROSECRANS AVE, SANTA FE SPRINGS, CA 90670

TELE: (626) 579-7130 FAX: (626) 579-1936

www.detoronic.com