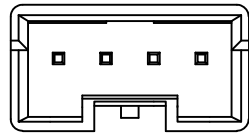
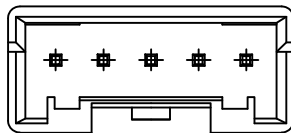


APPROVED: \_\_\_\_\_  
DATE: \_\_\_\_\_ TITLE: \_\_\_\_\_

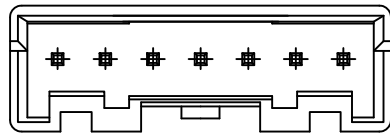
Rev	AWO #	Description	Date	Appr
-		RELEASED	2/02/10	
A		REVISED SHAPE	12/22/12	
B		REVISED DIM.	2/5/14	AY
C		UPDATE DRAWING	9/24/20	AYLL1



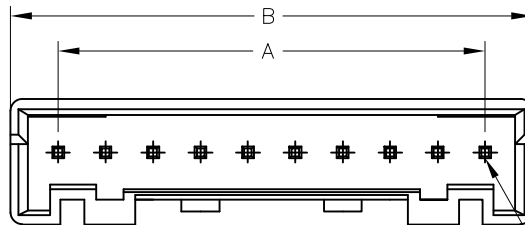
2~4P



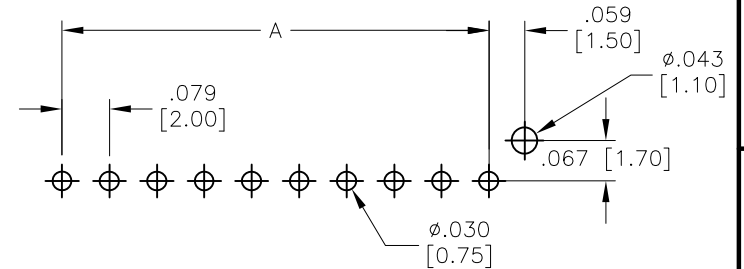
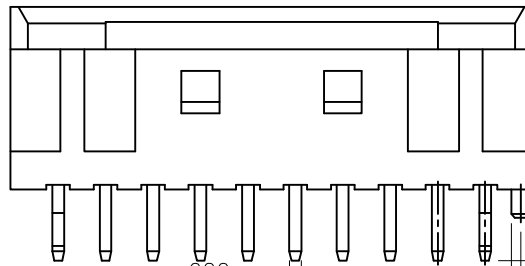
5~6P



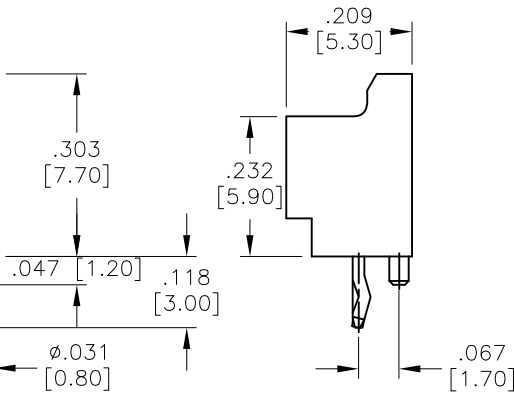
7~9P



10P-15P



RECOMMENDED PCB LAYOUT



SPECIFICATIONS:

Material:

Insulator: PBT, glass reinforced, rated UL 94V-0

Insulator color: White

Contacts: Brass

Plating:

Tin over Copper underplate overall

Electrical:

Voltage rating: 250 AC/DC

Current rating: 3A AC/DC max AWG#22

Contact resistance: 20 mohms max

Insulation resistance: 1000 Mohms min

Dielectric withstanding voltage: 800 VAC for 1 minute

Temperature Rating:

Operating temperature: -25°C to +85°C

Environmental:

Lead free, RoHS compliant



Positions: 02 thru 15

A = .079 [2.00] x No. of Spaces

B = .079 [2.00] x No. of Spaces + .157 [4.00]

UNLESS OTHERWISE SPECIFIED  
ALL DIMENSIONS ARE INCHES [MM]  
TOLERANCES: EXCEPT AS NOTED

INCHES		HOLES	
.X	± .10	Ø.X	± .10
.XX	± .020	Ø.XX	± .015
.XXX	± .015	Ø.XXX	± .010

APPROVALS		DATE
DRAWN	DY	2/02/10
CHECKED		
APPROVED		

**ADAM**  
**TECH**  
INTERCONNECTS

909 Rahway Avenue,  
Union, NJ 07083  
Phone: 908-687-5000  
Fax: 908-687-5710

TITLE  
.079 [2.00] SHROUDED HEADER  
STRAIGHT, PCB

SIZE X	PART NO. 2SH-H-XX-TS	REV. C
REF: S00015T	SCALE: NTS	SHEET 1 OF 1