

VL2 PPC 9000 EX - Panel PC

1050364

<https://www.phoenixcontact.com/us/products/1050364>



Please be informed that the data shown in this PDF document is generated from our online catalog. Please find the complete data in the user documentation. Our general terms of use for downloads are valid.



ATEX/IECEx compliant and UL listed, IP65-rated Valueline® industrial panel PC (PPC) with a fully-sealed convection booster and Intel® Core™ i7-6822EQ processor. Up to 16 GB of RAM. Mass storage options include HDD and SSD. A single optional PCI or PCIe slot is available.

Your advantages

- State-of-the-art operating concepts, thanks to multi-touch support
- Easy to maintain, thanks to easily accessible components
- Fully sealed IP30 convection booster for maximum cooling performance
- ATEX/IECEx Certified
- Attractive industrial design to upgrade your system
- Easily removable rotating or solid-state hard drives in a variety of sizes
- Robust and sturdy, thanks to glass front suitable for industrial use
- Flexible extension via optional PCI or PCIe slot
- Panel PC (PPC): IP65 rating in front panel and IP20 rating in back
- Unprecedented power, responsiveness, and energy-efficiency of an Intel® Core™ i7 processor
- Configurable as a panel PC (PPC)

Commercial data

Item number	1050364
Packing unit	1 pc
Minimum order quantity	1 pc
Note	Made to order (non-returnable)
Sales key	DR20
Product key	DRBAAB
Catalog page	Page 493 (C-6-2019)
Weight per piece (including packing)	22.22 g
Weight per piece (excluding packing)	22.22 g
Customs tariff number	84715000
Country of origin	TW

VL2 PPC 9000 EX - Panel PC

1050364

<https://www.phoenixcontact.com/us/products/1050364>



Technical data

Product properties

Product type	Panel PC
Computer data	
Processor	Intel® Core™ i7-6822EQ 2 GHz/2.8 GHz
Operating system	without operating system
	Windows® 7 Professional SP1 (64-Bit), German
	Windows® 7 Professional SP1 (64-bit), English
	Windows® 7 Ultimate SP1 (64 bit), Multi-language
	Windows® 7 Ultimate SP1 (32-bit), Multi-language
	Windows® 7 Professional SP1 (32-bit), English
	Windows® 7 Professional SP1 (32-bit), German
	Windows® Embedded Standard 7 SP1 (32-bit), Multi-language
	Windows® Embedded Standard 7 SP1 (64-bit), Multi-language
	Windows® 10 IoT Enterprise LTSC 2019 (64-bit), Multi-language
RAM	4 GB DDR4 SODIMM
	8 GB DDR4 SODIMM
	16 GB DDR4 SODIMM
Data storage system	without data storage
	SSD (SLC), 4 GB
	SSD (SLC), 8 GB
	SSD (SLC), 16 GB
	SSD (SLC), 32 GB
	2.5" HDD, 160 GB (SATA)
	2.5" SSD, 150 GB
	2.5" SSD, 240 GB
Cooling	2.5" SSD, 480 GB
	Fully-sealed IP30 convection booster
PCI option 1	without slot
	PCI
	PCI x4
Raid system	without RAID system
	0, 1
Slots	PCI/PCIe optional
Display	
Display type	39.6 cm / 15.6"-TFT
	47 cm / 18.5" TFT
	54.6 cm / 21.5"-TFT
Screen resolution	1366 x 768 Pixel(s) (WXGA), 15.6" TFT; 18.5" TFT

VL2 PPC 9000 EX - Panel PC



1050364

<https://www.phoenixcontact.com/us/products/1050364>

	1920 x 1080 Pixel(s) (Full HD)
Touch technology	projective-capacitive, ten-touch control
Display lighting type	LED
Brightness	300 cd/m², typical (adjustable)
MTBF	> 50000 h (Dependent on configuration)
Color spectrum	16.7 million colors
Graphics card	Intel® HD Graphics 530

System properties

User software	without user software
	Visu+

Electrical properties

Service life of battery	5 years (typical)
-------------------------	-------------------

Supply

Supply voltage	24 V DC
Supply voltage range	Includes all tolerances and ripple
Power supply unit	24 V DC ±20 %
Max. current consumption	5.2 A

Real-time clock

Realtime clock	Yes (battery-backed)
----------------	----------------------

Interfaces

Interfaces	1x COM (RS-232/422/485)
	2x USB 2.0
	2x USB 3.0
Optional interfaces	Without optional interface
	2x COM (RS-232), 1x COM (RS-232/422/485)
Monitor output	2x DisplayPort
Network	2x Ethernet (10/100/1000 Mbps), RJ45
LAN chipset	Intel® I210-AT

Dimensions

Installation dimensions

Width / Height / Installation depth	394.4 mm / 263.2 mm / (Panel cutout for 15.6-in. display)
	455 mm / 303.2 mm / (Panel cutout for 18.5-in. display)
	522 mm / 344 mm / (Panel cutout for 21.5-in. display)

Environmental and real-life conditions

Ambient conditions

Degree of protection	IP65 (Front)
	IP30 (back)
	IP65 (front), IP30 (back)

VL2 PPC 9000 EX - Panel PC



1050364

<https://www.phoenixcontact.com/us/products/1050364>

Ambient temperature (operation)	0 °C ... 45 °C (with HDD)
	-20 °C ... 50 °C (with SSD)
Ambient temperature (storage/transport)	-40 °C ... 70 °C
Permissible humidity (operation)	5 % ... 95 % (non-condensing)
Permissible humidity (storage/transport)	5 % ... 95 % (non-condensing)
Shock	DIN EN 60068-2-27
Vibration (operation)	1g with SSD, 0.5g with HDD, according to EN 60068-2-6

Mounting

Mounting type	Front mounting
---------------	----------------

VL2 PPC 9000 EX - Panel PC



1050364

<https://www.phoenixcontact.com/us/products/1050364>

Approvals

To download certificates, visit the product detail page: <https://www.phoenixcontact.com/us/products/1050364>



UL Listed

Approval ID: E238705-20151130



cUL Listed

Approval ID: E238705-20151130



cUL Listed

Approval ID: FILE E 238705



UL Listed

Approval ID: E238705-D1000-3/A1



cUL Listed

Approval ID: E238705-D1000-3/A1



UL Listed

Approval ID: FILE E 238705



IECEx

Approval ID: IECEx UL 18.0054X



cUL Listed

Approval ID: FILE E 196811



UL Listed

Approval ID: FILE E 196811



ATEX

Approval ID: DEMKO 18 ATEX 1949X



ATEX

Approval ID: DEMKO 20 ATEX 2306X

VL2 PPC 9000 EX - Panel PC

1050364

<https://www.phoenixcontact.com/us/products/1050364>



cULus Listed

VL2 PPC 9000 EX - Panel PC



1050364

<https://www.phoenixcontact.com/us/products/1050364>

Classifications

ECLASS

ECLASS-11.0	19200103
ECLASS-12.0	19200103
ECLASS-13.0	19200103

ETIM

ETIM 9.0	EC001414
----------	----------

UNSPSC

UNSPSC 21.0	43211500
-------------	----------

VL2 PPC 9000 EX - Panel PC

1050364

<https://www.phoenixcontact.com/us/products/1050364>



Environmental product compliance

EU RoHS	
Fulfills EU RoHS substance requirements	Yes
Exemption	6(a), 6(a)-I, 7(a), 7(c)-I
China RoHS	
Environment friendly use period (EFUP)	EFUP-10
	An article-related China RoHS declaration table can be found in the download area for the respective article under "Manufacturer declaration". For all articles with EFUP-E, no China RoHS declaration table issued and required.
EU REACH SVHC	
REACH candidate substance (CAS No.)	Lead(CAS: 7439-92-1)

VL2 PPC 9000 EX - Panel PC

1050364

<https://www.phoenixcontact.com/us/products/1050364>



Accessories

WES2009 / WES7 RECOVERY USB - Software package

2400303

<https://www.phoenixcontact.com/us/products/2400303>



Operating system recovery kit for Windows® Embedded 2009 and Windows Embedded 7 operating systems. Kit includes a USB drive.

VL2 4 GB SLC SSD SATA KIT - Memory

2400335

<https://www.phoenixcontact.com/us/products/2400335>



4 GB, 2.5" SATA SSD kit with tray for VL2... industrial PPC and BPC products

VL2 PPC 9000 EX - Panel PC

1050364

<https://www.phoenixcontact.com/us/products/1050364>



VL2 8 GB SLC SSD SATA KIT - Memory

2400336

<https://www.phoenixcontact.com/us/products/2400336>

8 GB, 2.5" SATA SSD kit with tray for VL2... industrial PPC and BPC products

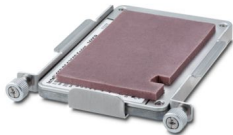


VL2 16 GB SLC SSD SATA KIT - Memory

2400337

<https://www.phoenixcontact.com/us/products/2400337>

16 GB, 2.5-inch SATA SSD kit with tray for VL2... industrial PPC and BPC products



VL2 PPC 9000 EX - Panel PC

1050364

<https://www.phoenixcontact.com/us/products/1050364>



VL2 32 GB SLC SSD SATA KIT - Memory

2400338

<https://www.phoenixcontact.com/us/products/2400338>

32 GB, 2.5-inch SATA SSD kit with tray for VL2... industrial PPC and BPC products



DP TO VGA ADPTR - Adapter

2400173

<https://www.phoenixcontact.com/us/products/2400173>

DisplayPort to VGA video adapter



VL2 PPC 9000 EX - Panel PC

1050364

<https://www.phoenixcontact.com/us/products/1050364>



DP TO DVI ADPTR - Adapter

2400174

<https://www.phoenixcontact.com/us/products/2400174>

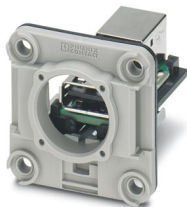
DisplayPort to DVI-i video adapter



CUC-V06-F1PGY-UBA/UBBB - Panel mounting frames

1411904

<https://www.phoenixcontact.com/us/products/1411904>



USB socket insert, 4-pos., USB socket type A to USB socket type B, socket type A to panel mounting frame side, for the Freenet system in the panel mounting frame, IP20 terminal outlet, 19" patch panel, and service interface

VL2 PPC 9000 EX - Panel PC

1050364

<https://www.phoenixcontact.com/us/products/1050364>



VS-04-C-SDA/SDB/1,8 - USB cable

1405578

<https://www.phoenixcontact.com/us/products/1405578>



USB cable, with USB connectors at both ends, assembled connector type: A on B, length:1.8 m

VS-08-SD-F - Protective cover

1652606

<https://www.phoenixcontact.com/us/products/1652606>



Protective cover, IP67, flat design, to cover the contact insert in the panel mounting frame, color: gray

VL2 PPC 9000 EX - Panel PC

1050364

<https://www.phoenixcontact.com/us/products/1050364>



VL2 480 GB SSD KIT - Memory

2403834

<https://www.phoenixcontact.com/us/products/2403834>

480 GB, 2.5-inch SATA SSD kit with tray for VL2... industrial PPC and BPC products



VL 2.0M DP CABLE - Connecting cable

2404774

<https://www.phoenixcontact.com/us/products/2404774>

DisplayPort (DP) cable (2 m) for use with industrial computers



VL2 PPC 9000 EX - Panel PC

1050364

<https://www.phoenixcontact.com/us/products/1050364>



VL2 THERMAL PAD: 9MM 2.5" SATA - Accessories

2403290

<https://www.phoenixcontact.com/us/products/2403290>



Replacement thermal heat transfer pad for 9.0 mm to 9.4 mm drives on VL2...
2000/3000/7000

VL2 THERMAL PAD: 7MM 2.5" SATA - Accessories

2403289

<https://www.phoenixcontact.com/us/products/2403289>



Replacement thermal heat transfer pad for 6.5 mm to 7.0 mm drives on VL2...
2000/3000/7000

VL2 PPC 9000 EX - Panel PC

1050364

<https://www.phoenixcontact.com/us/products/1050364>



VL2 SATA TRAY - EMPTY - Removable hard drive tray

2403291

<https://www.phoenixcontact.com/us/products/2403291>



Mass storage tray for HDD/SSD installation in a Phoenix Contact IPC. Tray style D is compatible with VL2...PC...

IPC MOUNTING BLOCK STYLE B - Panel-mount flange

2403288

<https://www.phoenixcontact.com/us/products/2403288>



IPC mounting block style B. Compatible with VL2 PPC 2000/3000/7000/9000 and BL PPC 1000/3000/7000/9000 mounting. Includes three mounting blocks.

VL2 PPC 9000 EX - Panel PC



1050364

<https://www.phoenixcontact.com/us/products/1050364>

MSTB 2,5/ 3-STF-5,08 - PCB connector

1777992

<https://www.phoenixcontact.com/us/products/1777992>



PCB connector, nominal cross section: 2.5 mm², color: green, nominal current: 12 A, rated voltage (III/2): 320 V, contact surface: Tin, contact connection type: Socket, number of potentials: 3, number of rows: 1, number of positions: 3, number of connections: 3, product range: MSTB 2,5/..-STF, pitch: 5.08 mm, connection method: Screw connection with tension sleeve, screw head form: L Slotted, conductor/PCB connection direction: 0 °, locking clip: - without locking clip, plug-in system: COMBICON MSTB 2,5, locking: Screw locking mechanism, mounting: Screw flange, type of packaging: packed in cardboard

Phoenix Contact 2024 © - all rights reserved

<https://www.phoenixcontact.com>

Phoenix Contact USA
586 Fulling Mill Road
Middletown, PA 17057, United States
(+717) 944-1300
info@phoenixcon.com