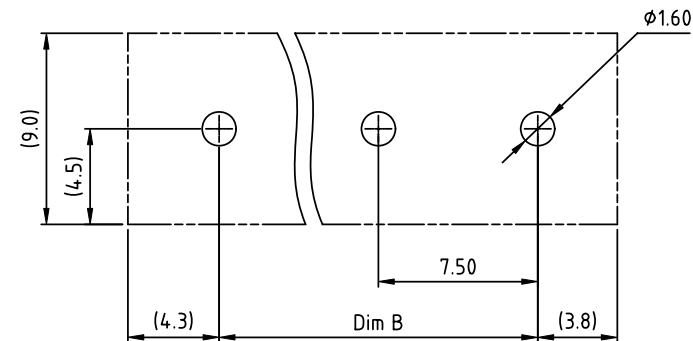
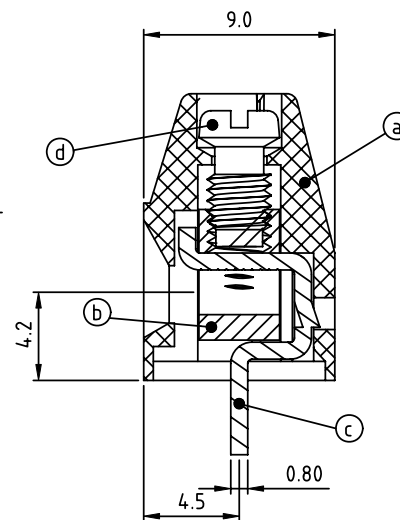
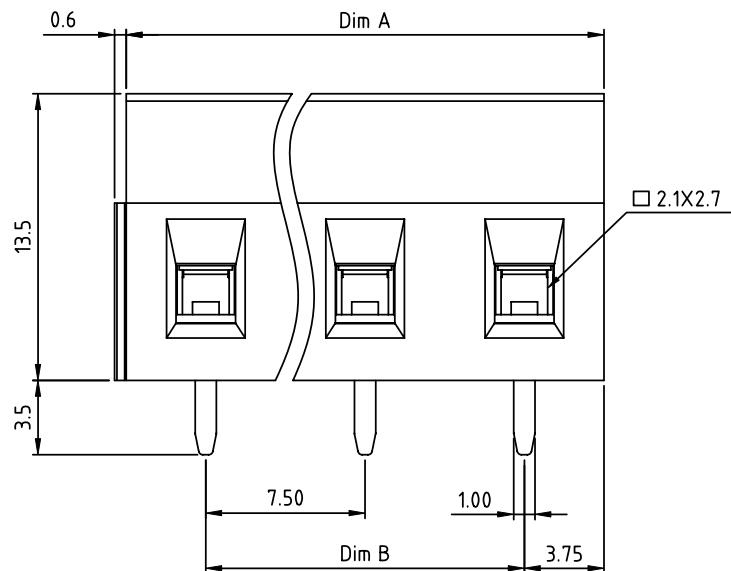
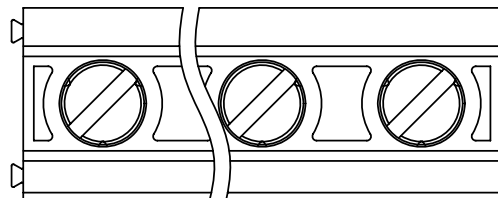


PRODUCT NUMBER	PITCH
Vlx41x200J0G	7.50 mm




RECOMMENDED P.C.B LAYOUT
TOP VIEW

Material:

- Item ① Terminal housing : Thermoplastic (UL 94V-0)
- Item ② Clamp : Brass ,Ni plated
- Item ③ Solder pin : Brass ,Tin plated
- Item ④ Terminal screw: Steel Zinc plating"- "slot type

Electrical cULus/FIMKO

- Voltage rating: 300VAC/300VAC
- Current rating: 16A/17.5A
- Wire range: 1.5mm²
- Solid wire(AWG): 12-28
- Stranded wire(AWG): 12-28
- Torque: 3.5Lb-In./0.5Nm
- Screw: M3
- Wire strip length: 6-7mm
- Withstanding Voltage: 1.6KV/2.5KV
- Operating temperature: -40°C to +115°C
- Soldering temperature: 260°C±5°C/5 Sec
- Safety Approval: 

DIMENSION

Dim A	N×7.5
Dim B	(N-1)×7.5

N=Number of poles

Poles	Tolerance
2p-6p	±0.15
7p-12p	±0.25
13p-16p	±0.35

PART NO.: VI xx 4 1 x 2 00J0 G

End stackable

No. of poles

02 2 poles

03 3 poles

... ..

16 16 poles

Color

0 Black (RAL9005)

2 Red (RAL3001/D)

3 Orange(RAL2011/P)

4 Yellow(RAL1018/A)

5 Green(RAL6018/T)

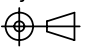
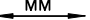

6 Blue (RAL5015/A)

8 Grey(RAL7035/D)

9 White(RAL1102)

C Green(RAL6018/U)

RoHS compliant
(lead<4%)
In copper Alloy

mat'l. code				surface ASME Y14.5 ✓		tolerance ASME Y14.5		projection 		product family TERMINAL BLOCK													
ltr ecn no dr date				tolerances unless otherwise specified								title TERMINAL BLOCK											
				linear angles		X.±0.5		scale		RISING CLAMP,180D WIRE INLET,END STACKABLE													
						X.X±0.3																	
				X°±1°		X.XX±0.1																	
				dr		EVIN ZHONG		040914				dwg no				sheet 1 of 1				size			
				enr		EVIN ZHONG		040914				Vlxx41x200J0G				A							
				chr		HANKE FENG		040914															
				appd		SHI JUN		040914															
sheet index		revision sheet		A		1																	