



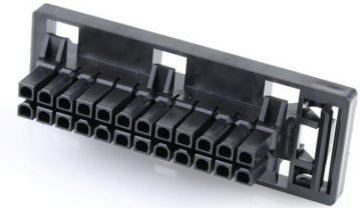
Part Number : [445160012](#)

Product Description : Mini-Fit BMI Receptacle Housing, 4.20mm Pitch, Dual Row, Panel Mount, Slide-and-Lock, Polyester UL 94V-0, 24 Circuits

Series Number : 44516

Status : Active

Product Category : Connector Housings



Documents and Resources

Drawings

[445160012_sd.pdf](#)

[PK-44516-002-000.pdf](#)

3D Models and Design Files

[STEP AP242](#)

[SOLIDWORKS](#)

[Creo](#)

Specifications

[PS-45750-001-001.pdf](#)

[55560002-PS-CH-000.pdf](#)

[55560002-PS-ES-000.pdf](#)


[55560002-PS-SK-000.pdf](#)

[PS-5556-002-001.pdf](#)

[TS-5556-002-001.pdf](#)

Product Environment Compliance

Compliance

GADSL/IMDS	Not Relevant
China RoHS	 per SJ/T 11365-2006
EU ELV	Not Relevant
Low-Halogen Status	Not Low-Halogen per IEC 61249-2-21

REACH SVHC	Not Contained per D(2025)7771-DC (04 Feb 2026)
EU RoHS	Compliant per EU 2015/863

Compliance Statements

- EU RoHS
- REACH SVHC
- Low-Halogen

Industry Documents

- IPC 1752A Class C
- IPC 1752A Class D
- Molex Product Compliance Declaration
- IEC-62474
- chemSHERPA (xml)

Substances of Interest

- PFAS

EU RoHS Certificate of Compliance

Additional Product Compliance Information

Part Details

General

Status	Active
Category	Connector Housings
Series	44516
Description	Mini-Fit BMI Receptacle Housing, 4.20mm Pitch, Dual Row, Panel Mount, Slide-and-Lock, Polyester UL 94V-0, 24 Circuits
Application	Power, Wire-to-Board, Wire-to-Wire
Comments	Current = 13A max. per circuit when header is mated to a receptacle loaded with 45750 series terminals crimped to 16 AWG wire. See Molex product specification PS-45750-001 for additional current derating information.
Product Name	Mini-Fit BMI

UPC	756054224441
-----	--------------

Agency

CSA	LR19980
UL	E29179

Physical

Circuits (maximum)	24
Color - Resin	Black
Gender	Receptacle
Glow-Wire Capable	No
Keying to Mating Part	No
Lock to Mating Part	No
Material - Resin	Polyester
Net Weight	9.300/g
Number of Rows	2
Packaging Type	Tray
Panel Mount	Yes
Pitch - Mating Interface	4.20mm
Pitch - Termination Interface	4.20mm
Polarized to Mating Part	Yes
Stackable	No
Temperature Range - Operating	-40° to +105°C

Solder Process Data

Lead-Free Process Capability	N/A
------------------------------	-----

Mates With / Use With

Mates with Part(s)

Description	Part Number
Mini-Fit BMI Right-Angle Dual Row Headers	<u>42404</u>
Mini-Fit BMI Vertical Dual Row Headers	<u>42440</u>

Mini-Fit BMI Dual Row Plug Housings	<u>42475</u>
Mini-Fit BMI Right-Angle Dual Row Headers	<u>43759</u>
Mini-Fit BMI Right-Angle Dual Row Headers	<u>43810</u>
Mini-Fit BMI Vertical Dual Row Headers	<u>43879</u>
Mini-Fit BMI Vertical Dual Row Headers	<u>44068</u>

Use with Part(s)

Description	Part Number
Pre-Crimped Lead Mini-Fit Female-to-Mini-Fit Female, Tin (Sn) Plating, 150.00mm Length, 18 AWG, Red	<u>797580001</u>
Pre-Crimped Lead Mini-Fit Female-to-Mini-Fit Female, Tin (Sn) Plating, 300.00mm Length, 18 AWG, Red	<u>797580009</u>
Mini-Fit Female Crimp Terminals	<u>5556</u>
Mini-Fit Plus Female Crimp Terminals	<u>45750</u>
Mini-Fit HCS Female Crimp Terminals	<u>44476</u>

This document was generated on May 21, 2026