



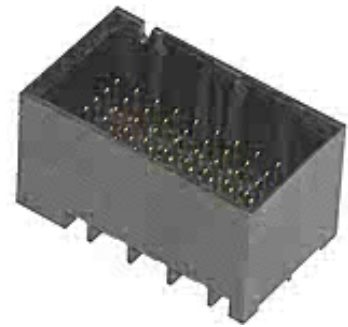
Part Number : [764551127](#)

Product Description : Impact 100 Ohm 2 Pair Vertical Backplane Header, Unguided, Dual Endwall, 10 Columns, 60 Circuits, Pin Length 4.90mm, Plated Through Hole Dimension 0.39mm, Lead-Free

Series Number : 76455

Status : Active

Product Category : Backplane Connectors



Documents and Resources

Drawings

[764551127 sd.pdf](#)

[PK-70873-761-001.pdf](#)

[PK-70873-7704-001.pdf](#)

3D Models and Design Files

[STEP AP242](#)

[SOLIDWORKS](#)

[Creo](#)

[SYM-76455-1127-001.zip](#)

Specifications

[AS-76060-990-001.pdf](#)

[AS-76060-9999-001.pdf](#)

[PS-76060-999-001.pdf](#)


[TS-76460-0001-001.pdf](#)

Tooling Specifications

[ATS-622018692-001.pdf](#)

Product Environment Compliance

Compliance

GADSL/IMDS	Compliant with Exemption 44; 34; 33
China RoHS	 per SJ/T 11365-2006

EU ELV	Not Relevant
Low-Halogen Status	Low-Halogen per IEC 61249-2-21
REACH SVHC	Not Contained per D(2025)6375-DC (05 Nov 2025)
EU RoHS	Compliant per EU 2015/863

Compliance Statements

- EU RoHS
- REACH SVHC
- Low-Halogen

Industry Documents

- IPC 1752A Class C
- IPC 1752A Class D
- Molex Product Compliance Declaration
- IEC-62474
- chemSHERPA (xml)

Substances of Interest

- PFAS

EU RoHS Certificate of Compliance

Additional Product Compliance Information

Part Details

General

Status	Active
Category	Backplane Connectors
Series	76455
Description	Impact 100 Ohm 2 Pair Vertical Backplane Header, Unguided, Dual Endwall, 10 Columns, 60 Circuits, Pin Length 4.90mm, Plated Through Hole Dimension 0.39mm, Lead-Free
Application	Conventional
Component Type	PCB Header
Product Name	Impact
UPC	884982002203

Agency

CSA	LR19980
UL	E29179

Electrical

Current - Maximum per Contact	0.75A
Data Rate	25.0 Gbps
Impedance	100Ω
Shielded	No
Shield Type	N/A
Voltage - Maximum	30V AC (RMS)/DC

Physical

Circuits (Loaded)	60
Circuits (maximum)	60
Color - Resin	Black
Durability (mating cycles max)	200
First Mate / Last Break	No
Flammability	94V-0
Guide to Mating Part	No
Keying to Mating Part	None
Material - Metal	High Performance Alloy (HPA)
Material - Plating Mating	Gold
Material - Plating Termination	Tin
Material - Resin	High Temperature Thermoplastic
Net Weight	2.144/g
Number of Columns	10
Number of Pairs	2
Number of Rows	6
Orientation	Vertical
Packaging Type	Tray
PCB Locator	No
PCB Retention	None
PCB Thickness - Recommended	1.00mm
PC Tail Length	1.40mm
Pitch - Mating Interface	1.90mm

Pitch - Termination Interface	1.90mm
Plating min - Mating	0.762µm
Polarized to PCB	No
Stackable	No
Temperature Range - Operating	-55° to +85°C
Termination Interface Style	Through Hole - Compliant Pin

Solder Process Data

Lead-Free Process Capability	N/A
------------------------------	-----

Mates With / Use With

Mates with Part(s)

Description	Part Number
Impact 100 Ohm 2 Pair Right-Angle Daughtercard Receptacles	<u>76460</u>

Use with Part(s)

Description	Part Number
GbX Backplane Guide Pins	<u>75234</u>

Application Tooling

This document was generated on Dec 12, 2025