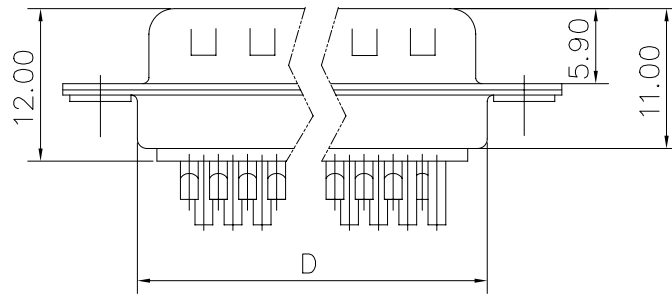
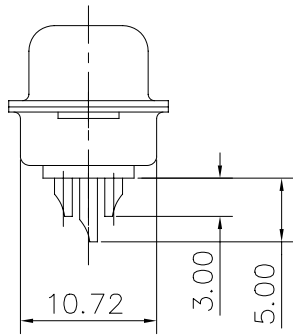
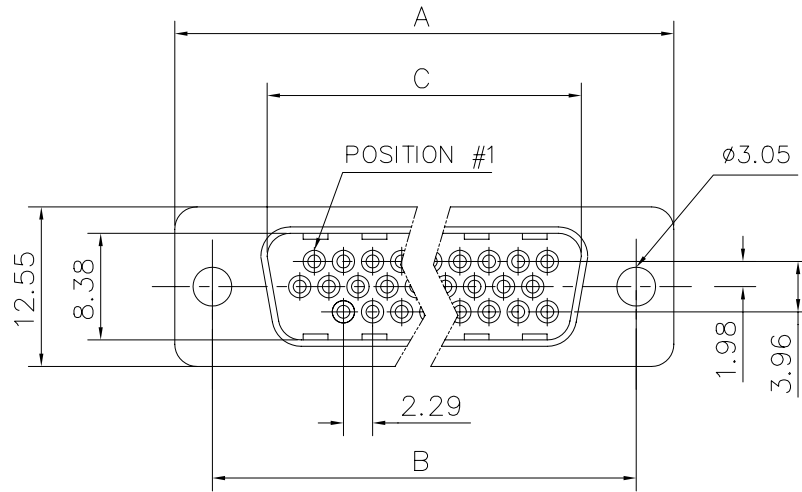


This document is the property of Amphenol Corporation and is delivered on the express condition that it is not to be disclosed, reproduced or used, in whole or in part, for manufacture or sale by anyone other than Amphenol Corporation without its prior consent, & that no right is granted to disclose or to use any information in this document.



Customer drawing

DIM.S				
	SHELL	A	B	C
15	30.84	24.99	16.92	19.28
26	39.24	33.32	24.70	27.51
44	53.04	47.04	38.96	41.30
62	69.32	63.50	55.42	57.71

REVISIONS				
SYM	ECN	DESCRIPTION	DATE	APPROVED
1			12/06/07	

D-SUB TECHNICAL DATA

SHELL : Steel 2.5um (100u") min tin over 1.25um (50u") min nickel
 BODY : Glass filled thermoplastic.
 Flame retardant to UL94 V-0 Color Black

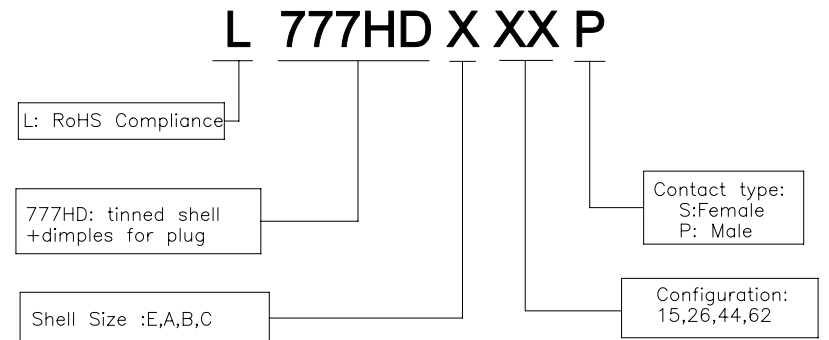
CONTACTS : Brass
 0.4um(15u") min. gold over 1.25um(50u") min. nicke on mating area
 2.5um(100u") min. tin over 1.25um(50u") min. nicke on solder area

ELECTRICAL : Voltage rating : 300 V RMS at 50 Hz
 Current rating 3A.
 Insulation resistance >1000 M Ohms
 Contact resistance 20 mOhms max.

CLIMATIC : Temperature range -55 °C up to 125°C

MARKING : Amphenol...(Series No.)
 Commercial reference
 Manufacturing date

PRODUCT CODE



UNLESS OTHERWISE SPECIFIED TOLERANCES		APPROVAL		DATE	Amphenol®
	U.S.	METRIC	DRAWN	Sunny.Li	
.X	+/-	0.50	CHECKED	tk.wang	12/06/07
.XX	+/-	0.30	CHECKED		
.XXX	+/-	0.20	CHECKED		
FRACTIONS	+/-				
ANGLES	+/-	2'			
FOR MATERIALS AND FINISHES SEE NOTES		DRAWING FILE :		TITLE	
REMOVE SHARP EDGES		ANGLE OF PROJECTION		Stamped and Formed Connector, HD series	
DIMENSIONS		SCALE		DRAWING NO.	
U.S. INCHES		NONE		A4	
METRIC MM		SHEET 1 OF 1		REV. 1	
				C L777HDXXXXP	