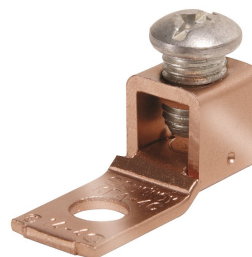


KPA8CUP, Mech. Terminal for Copper, 1-Hole, Unplated

By Burndy
Catalog # [KPA8CUP](#)

Mech. Pressure Bar Style Copper, 1-Hole, #10 Stud, #14 Sol-6 Str, Unplated



Features

- High copper alloy terminal (unplated) for joining a wide range of cable to equipment pads or terminal blocks
- Tongue and body are 1-piece design, pressure bar equalizes pressure over the conductor and prevents the screw from cutting into the cable

Application

For Joining A Wide Range Of Copper Cable To Equipment Pads Or Terminal Blocks

Specifications

Certification - UL Recognized	No
Buy American Compliant	No
Certification - cULus	No
EU RoHS Indicator	Yes
Industry Standard(s)	UL 486A-486B
Certification - ETL	No
Standards - Industry Standards Met	UL 486A-486B
Standards - RoHS Compliance Status	CM
UL Listed	Yes
Certification - CSA Approved	Yes

Conductor

Conductor - Copper Str Size	<ul style="list-style-type: none"> • 14 AWG • 12 AWG • 10 AWG • 9 AWG • 8 AWG • 7 AWG • 6 AWG
Conductor Size	14-8 AWG
Conductor - Copper Solid Size	<ul style="list-style-type: none"> • 14 AWG • 13 AWG • 12 AWG • 11 AWG • 10 AWG • 9 AWG • 8 AWG • 7 AWG • 6 AWG
Conductor - Copper Solid Size Range	14 AWG-6 AWG

Conductor Type	<ul style="list-style-type: none"> • CU C Str-Size • CU C Solid-Size
Conductor - Copper Str Size Range	14 AWG-6 AWG

Configuration

Physical Attribute - Number of Screws	1
Physical Attribute - Number of Holes	1
Connector Type	Terminal

Dimensions

Dimension - Pad Width inch	0.38 in
Package Height	0.000 in
Dimension - Height mm	20.6 mm
Dimension - Height inch	0.81 in
Dimension - Height fraction	64/79 in
Package Weight	0.000 lb.
Package Length	0.000 in
Package Width	0.000 in
Dimension - L Length Overall mm	26 mm
Dimension - Hole Size mm	5 mm
Dimension - Hole Size inch	0.20 in
Dimension - Strip Length inch	15/32
Dimension - Stud Size inch	#10
Dimension - Bolt Size fraction	#10
Dimension - Width mm	10 mm
Dimension - Width inch	0.38 in
Dimension - D inch	0.56 in
Dimension - N inch	0.22 in
Dimension - Length Overall inch	1.04 in

Force Related

Installation Torque Recommended in-lb	35
---------------------------------------	----

General

Trade Name	SCRULUG™
Physical Attribute - Screw Type	Slot
Plated	N
Sub Brand	SCRULUG
UPC	781810354353

Type	Bolted Lugs & Terminals	Minimum Pack Quantity	1
Material	Copper	Pallet Quantity	50400
Plating Type	Unplated	Carton Quantity	100
Hardware Type	# 12-24 SLOT		
UPC 14 Digit GTIN	00781810354353		

Product Assets

[Catalog \[English\]](#)

Logistics



A Hubbell brand

© 2026 Hubbell Incorporated. All rights reserved
BRDY-KPA8CUP-SPEC-EN | REV 5/2026