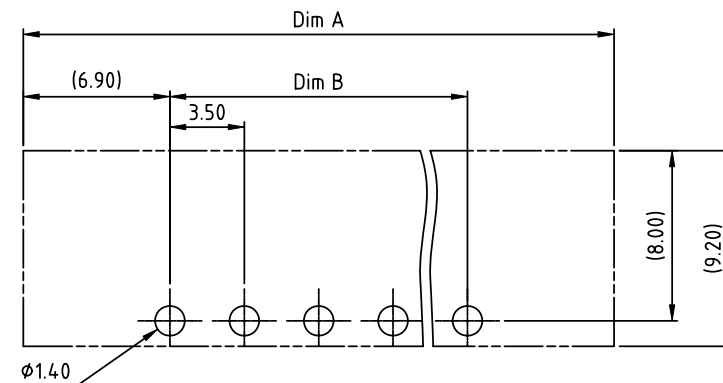
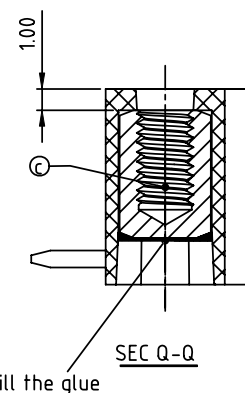
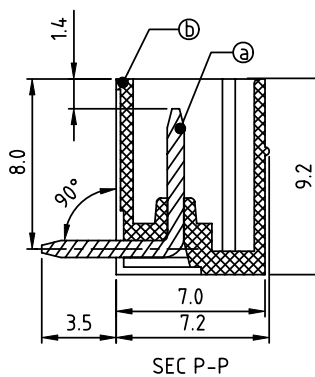
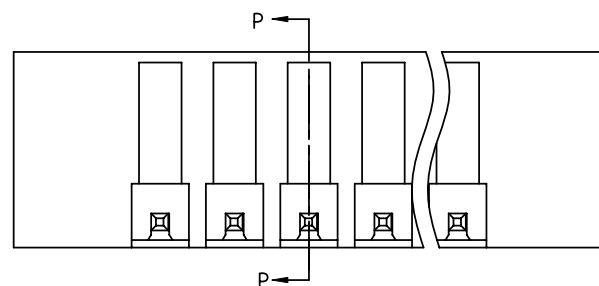
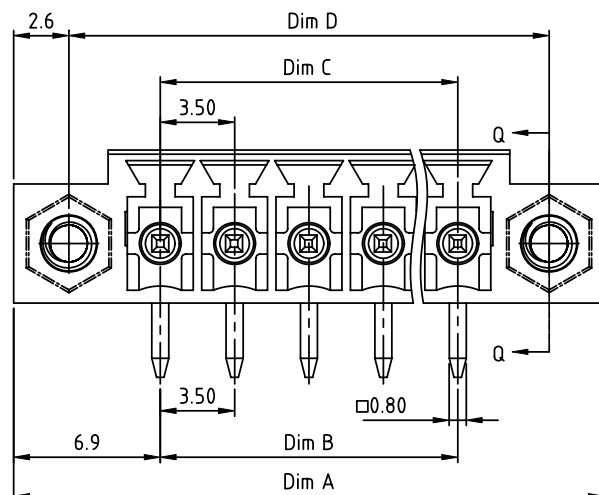


PRODUCT NUMBER	PITCH
OQxx15x100J0G	3.50 mm



RECOMMENDED P.C.B LAYOUT
TOP VIEW

Material:

- Item ① Male contact pin: Copper Tin plated
- Item ② Terminal housing: Thermoplastic (UL94V-0)
- Item ③ Flange nut: Brass M2.5

Electrical:

cULus /VDE

- Voltage rating: 300V/300V
- Current rating: 10A/10.5A
- Withstanding Voltage: 1.6 KV/2.5KV
- Operating temperature: -40°C to +115°C
- Soldering temperature: 260°C±5°C/5 Sec
- Safety Approval: cULus VDE

DIMENSION

Dim A	(N-1)×3.5+13.8
Dim B&C	(N-1)×3.5
Dim D	(N-1)×3.5+8.6

N= Number of poles

poles	Tol
2p-6p	±0.15
7p-12p	±0.20
13p-16p	±0.25
17p-24p	±0.30

PART NO.: OQ xx 1 5 x 1 00J0 G

No. of poles
02 2 poles
03 3 poles
...
24 24 poles

Body Color
0 Black (RAL9005)
2 Red (RAL3001/D)
3 Orange(RAL2011/P)
4 Yellow(RAL1018/A)
5 Green(RAL6018/T)
6 Blue (RAL5015/A)
8 Grey(RAL7035/D)
9 White(RAL1102)
C Green(RAL6018/U)

RoHS compliant
(lead<4%)
In copper Alloy

mat'l. code				surface	tolerance	projection	product family		
litr ecn no dr date				ASME Y14.5	ASME Y14.5		TERMINAL BLOCK		
				tolerances unless otherwise specified		MM	title		
				angles	X.±0.5		TERMINAL BLOCK		
				parallel	X.X±0.3		PLUGGABLE SOCKET, WITH FLANGE, RIGHT ANGLE		
				X'±1°	X.XX±0.1	scale	dwg no		
				dr	HANKE FENG 032614		sheet 1 of 1 size		
				engr	HANKE FENG 032614		OQxx15x100J0G		
				chr	SHI JUN 032614		A4		
				appd	SHI JUN 032614		type		
							CUSTOMER Drawing		
sheet index	revision	sheet	A						