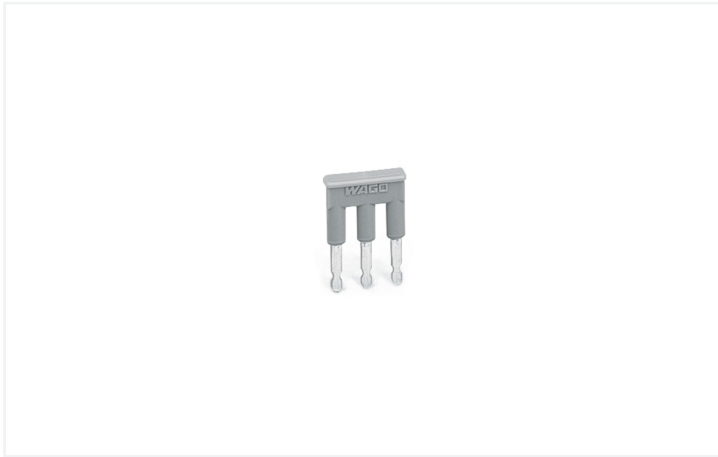


Data Sheet | Item Number: 280-483

Jumper; 3-way; insulated; gray

<https://www.wago.com/280-483>



Color: ■ gray

Electrical data

Ratings per IEC/EN

Rated current	24 A
---------------	------

Physical data

Width	15 mm / 0.591 inches
Height	4 mm / 0.157 inches
Depth	19.2 mm / 0.756 inches
Jumper assignment	1-2-3

Material data

Note (material data)	Information on material specifications can be found here
Color	gray
Insulation material (main housing)	Polyamide (PA66)
Fire load	0.009 MJ
Weight	1.4 g

Commercial data

PU (SPU)	200 (25) pcs
Packaging type	Box
Country of origin	DE
GTIN	4044918787147
Customs tariff number	85366990990

Product Classification	
UNSPSC	39121421
eCl@ss 10.0	27-14-11-40
eCl@ss 9.0	27-14-11-40
ETIM 9.0	EC000489
ETIM 10.0	EC000489
ECCN	NO US CLASSIFICATION

Environmental Product Compliance	
RoHS Compliance Status	Compliant, No Exemption

Downloads

Environmental Product Compliance

Compliance Search	
Environmental Product Compliance 280-483	↓

Documentation

Bid Text			
280-483	19.02.2019	xml 2.54 KB	↓
280-483	27.04.2017	doc 24.00 KB	↓

CAD/CAE-Data

CAD data	
2D/3D Models 280-483	↓

CAE data	
EPLAN Data Portal 280-483	↓
WSCAD Universe 280-483	↓
ZUKEN Portal 280-483	↓

1 Compatible Products

1.1 Optional Accessories

1.1.1 Tool

1.1.1.1 Operating tool

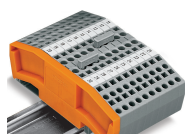


Item No.: 280-433

Operating tool; made of insulating material; 3-way; white

Installation Notes

Commoning



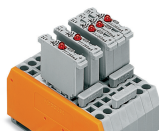
Commoning using comb-style jumper bars.
Push comb-style jumper bars down until fully inserted.

Commoning



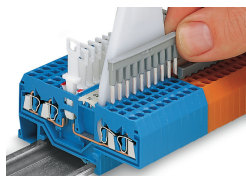
4-conductor through terminal blocks, angled type, formation of groups with 3-way, comb-style jumper bars

Commoning



Carrier terminal blocks with component plugs, alternate comb-style jumper bars, 3-way comb-style jumper bar

Commoning



Commoning front-entry disconnect terminal blocks via comb-style jumper bar using a 10-pole operating tool