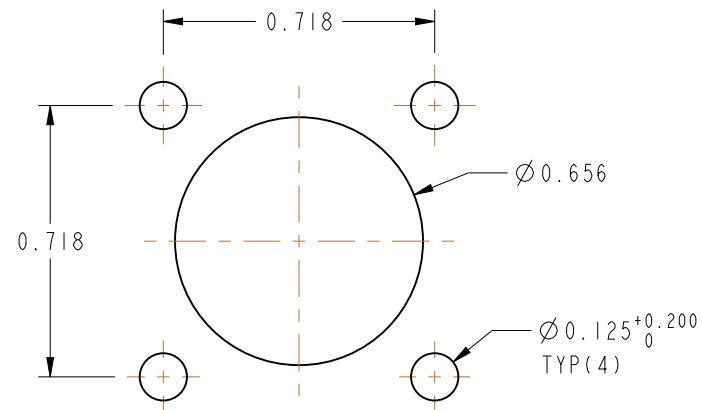
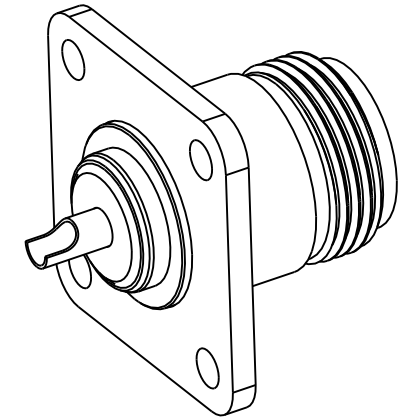


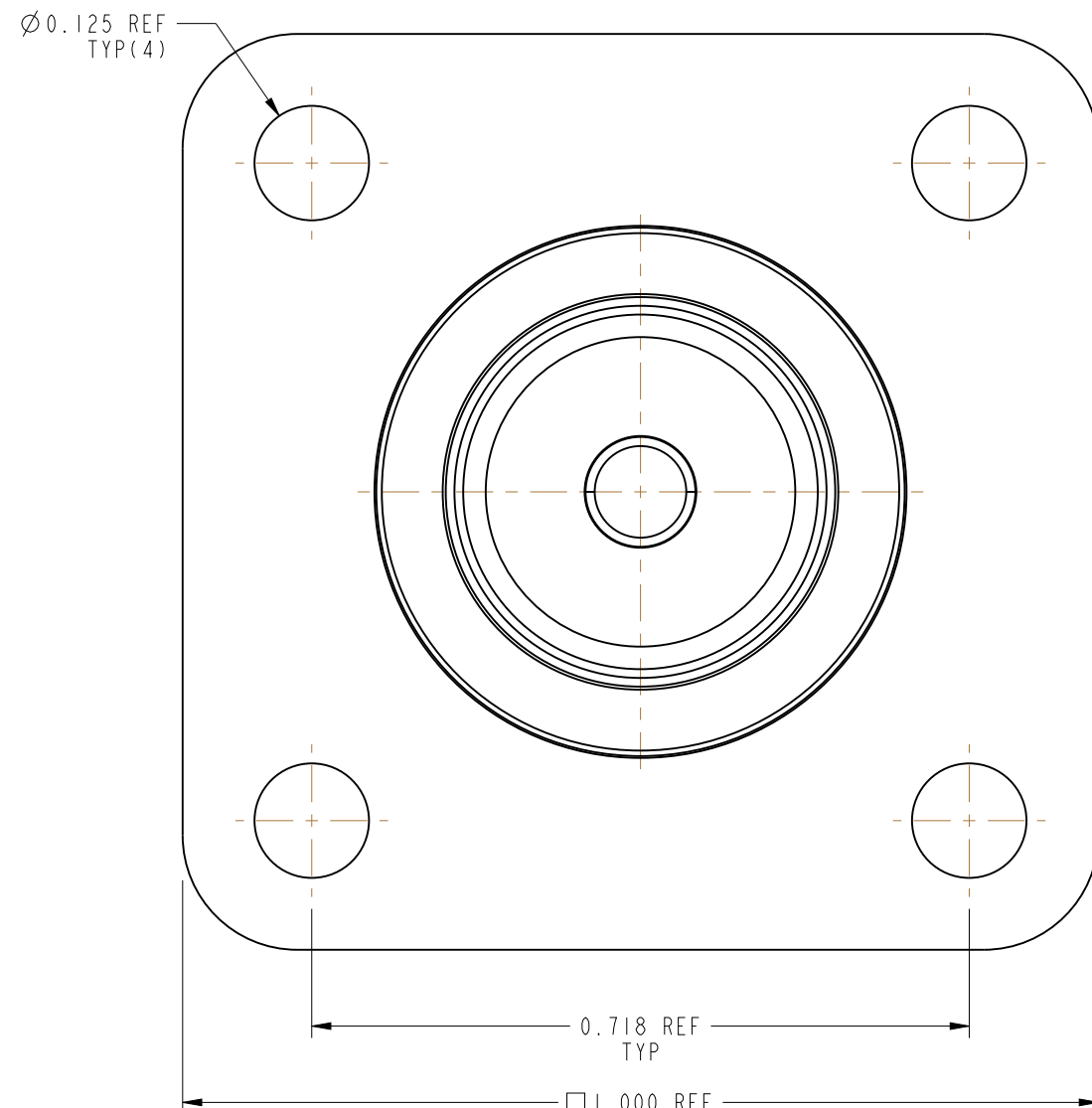
1. MATERIALS AND FINISHES:
BODY - BRASS, SILVER PLATING
CONTACT - BeCu, GOLD PLATING
INSULATOR - PTFE , NATURAL
2. ELECTRICAL:
A. IMPEDANCE: 50 OHM
3. MECHANICAL:
A. DURABILITY: 500 CYCLES/MIN.
B. TEMPERATURE RANGE: -65° C TO +165° C
4. PACKAGING:
A. QUANTITY: SINGLE PACK
B. MARKING: BAG TO BE MARKED
"AMPHENOL RF, 82-368, AND DATE CODE"



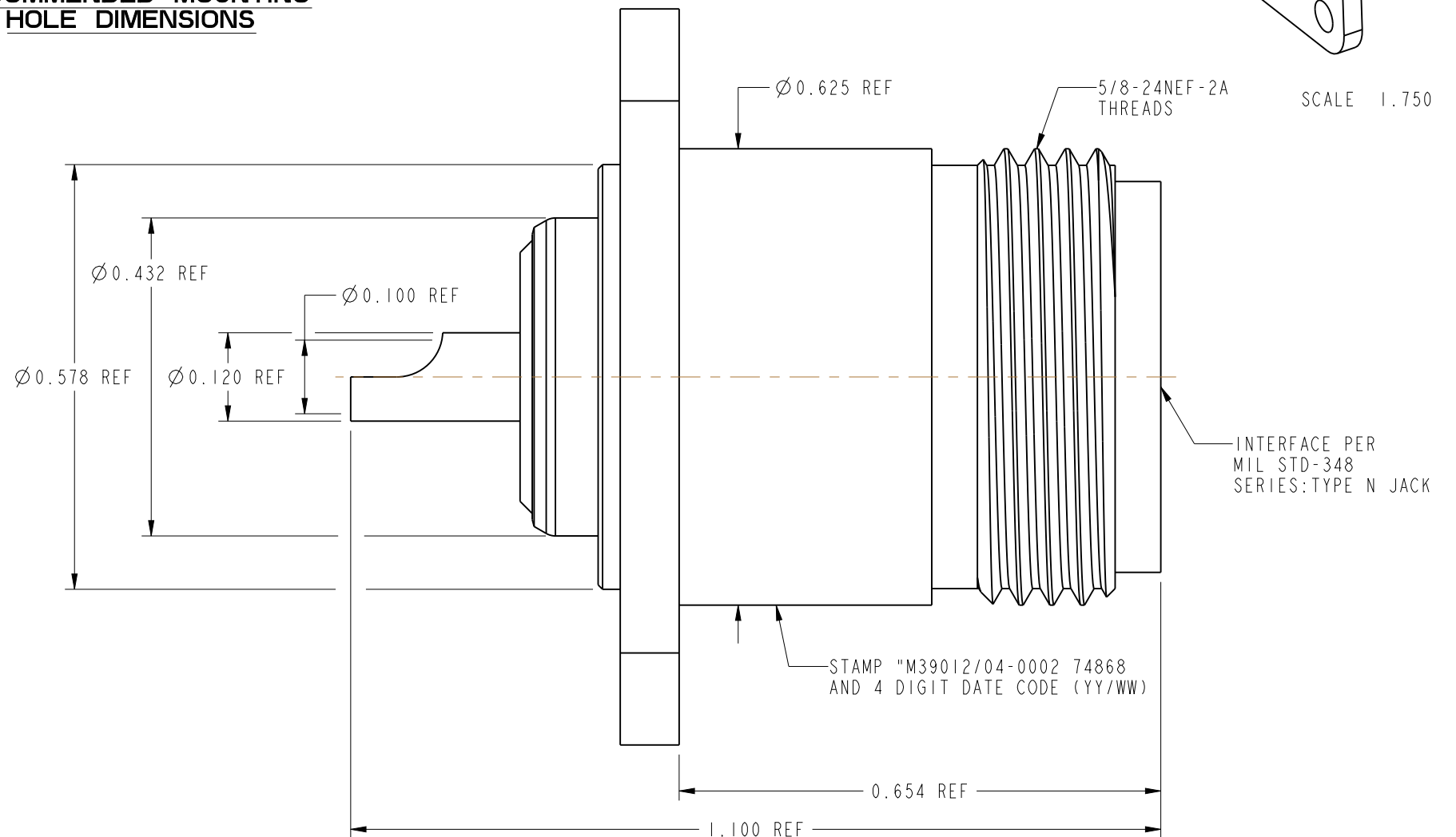
MIL-C-39012 INSPECTION



SCALE 1.750



RECOMMENDED MOUNTING HOLE DIMENSIONS



CUSTOMER OUTLINE DRAWING

ALL OTHER SHEETS ARE FOR INTERNAL USE ONLY

UNLESS OTHERWISE SPECIFIED, DIMENSIONS ARE IN INCHES AND TOLERANCES ARE: 2 PLACE DECIMAL 3 PLACE DECIMAL ANGLES ±.015 (0,381 mm) ±.005 (0,127 mm) ± 1°	MATERIAL SEE NOTES	DRAWN KARTHIK R	DATE 03-Oct-13	TITLE N PANEL JACK RECEPTACLE		Amphenol RF www.amphenolrf.com	
ENGINEER O. BARTHELMES		DATE 11/18/13					
APPROVED O. BARTHELMES		DATE 11/18/13					
REFERENCE EPA 802151-51 MS39012/04-0002 MOTOROLA 09D84301T01 CONFIGURATION LEVEL: In Work		CAD FILE	DWG SIZE B		REV V	DRAWING NO.82-368	
FINISH					ITEM NO.82-368		
					PART NO.82-368		