

| REVISIONS | | | | |
|-----------|-----|---------------------|----------|-------------|
| REV | ECO | DESCRIPTION | DATE | BY APPR |
| A1 | - | RELEASE NEW DRAWING | 20/SEP24 | KELIN TOMMY |



| PART NUMBER | REF |
|---------------------|------------|
| ARC20-50P01-BM01SP1 | DR20-50P01 |



| PART NUMBER | REF |
|---------------------|------------|
| ARC20-50P03-BM01SP1 | DR20-50P03 |



| PART NUMBER | REF |
|---------------------|------------|
| ARC20-50P05-BM01SP1 | DR20-50P05 |



| PART NUMBER | REF |
|---------------------|------------|
| ARC20-50P07-BM01SP1 | DR20-50P07 |



| PART NUMBER | REF |
|---------------------|------------|
| ARC20-50P09-BM01SP1 | DR20-50P09 |



| PART NUMBER | REF |
|---------------------|------------|
| ARC20-50P02-BM01SP1 | DR20-50P02 |



| PART NUMBER | REF |
|---------------------|------------|
| ARC20-50P04-BM01SP1 | DR20-50P04 |



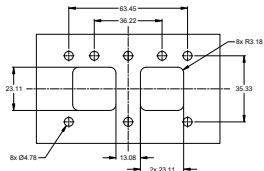
| PART NUMBER | REF |
|---------------------|------------|
| ARC20-50P06-BM01SP1 | DR20-50P06 |



| PART NUMBER | REF |
|---------------------|------------|
| ARC20-50P08-BM01SP1 | DR20-50P08 |



| PART NUMBER | REF |
|---------------------|------------|
| ARC20-50P10-BM01SP1 | DR20-50P10 |



RECOMMENDED PANEL CUT OUT

-FOR REFERENCE ONLY-
THICKNESS 2.0MM
INTERNAL SEALING SURFACE FINISH TO BE ∇ OR BETTER \square 0.13

| QUANTITY | ARC20-50Px-BM01SP1 | DESCRIPTION | ITEM |
|---|--------------------------------------|--|---|
| | | | |
| MATERIALS LIST | | | |
| UNLESS OTHERWISE SPECIFIED: 1) All dimensions are in millimeters 2) Tolerances are as follows: 1 PL DEC: ±0.30 Flatness ±1.00 2 PL DEC: ±0.10 Angles ±1° 3 PL DEC: ±0.08 3) Note reference: | | DESIGN APPROVED: KELIN 19/SEP24 CHECKED: SULEN 20/SEP24 DRAWN: APPROVAL: TOMMY 20/SEP24 CUSTOMER: THIS DRAWING IS SUPPLIED FOR INFORMATION ONLY. DESIGN FEATURES, SPECIFICATIONS AND PERFORMANCE DATA SHOWN HEREON ARE THE PROPERTY OF THE AMPHENOL CORPORATION. NO RIGHTS OF REPRODUCTION ARE GRANTED. ALL DIMENSIONS ARE SUBJECT TO NORMAL MANUFACTURING VARIATIONS. | Amphenol Site Systems - www.amphenol-site.com 44724 Morley Drive Clinton Township, MI 48036 50 POS, RECEPTACLE, PIN, ARC SERIES W/ BOARD LOCK, KEYED, BLK, SELECTIVE PLATED |
| MATERIAL SPECIFICATIONS: WEIGHT: 50g | PROCESS SPECIFICATIONS: REF: NONE | SIZE: B TYPE: C- PART: ARC20-50Px-BM01SP1 | REV: A1 SHEET: 2 OF 2 |