



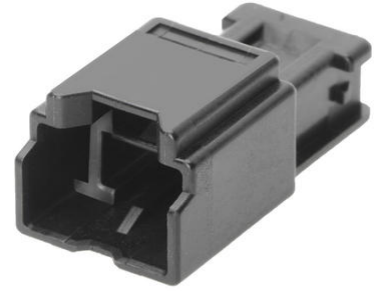
Part Number : [2137192021](#)

Product Description : 2.00mm Pitch, Micro-Lock Plus Plug Crimp Housing, Single Row, 2 Circuits, UL 94V-0, Black

Series Number : 213719

Status : Active

Product Category : Connector Housings



Documents and Resources

Drawings

[2137192021_sd.pdf](#)

3D Models and Design Files

[STEP AP242](#)

[SOLIDWORKS](#)

[Creo](#)

[2137192021.dxf](#)

Specifications

[5055700001-A03.pdf](#)

[2137199200-SPK-200.pdf](#)

[5055700003-PS-000.pdf](#)

Product Environment Compliance

Compliance

GADSL/IMDS	Not Relevant
China RoHS	 per SJ/T 11365-2006
EU ELV	Not Relevant
Low-Halogen Status	Low-Halogen per IEC 61249-2-21
REACH SVHC	Not Contained per D(2025)7771-DC (04 Feb 2026)
EU RoHS	Compliant per EU 2015/863

[Compliance Statements](#)

- EU RoHS
- REACH SVHC
- Low-Halogen

Industry Documents

- IPC 1752A Class C
- IPC 1752A Class D
- Molex Product Compliance Declaration
- IEC-62474
- chemSHERPA (xml)

Substances of Interest

- PFAS

EU RoHS Certificate of Compliance

Additional Product Compliance Information

Part Details

General

Status	Active
Category	Connector Housings
Series	213719
Description	2.00mm Pitch, Micro-Lock Plus Plug Crimp Housing, Single Row, 2 Circuits, UL 94V-0, Black
Application	Power, Wire-to-Wire
Keyword	Micro-Lock Plus 2.0
Product Name	Micro-Lock Plus
UPC	193264756339

Agency

UL	E29179
----	--------

Physical

Circuits (maximum)	2
Color - Resin	Black
Flammability	94V-0
Gender	Plug
Glow-Wire Capable	No
Keying to Mating Part	No

Lock to Mating Part	Yes
Material - Resin	Polyamide (PA)
Net Weight	1021.530/mg
Number of Rows	1
Packaging Type	Bag
Panel Mount	No
Pitch - Mating Interface	2.00mm
Polarized to Mating Part	Yes
Temperature Range - Operating	-40° to +105°C

Mates With / Use With

Mates with Part(s)

Description	Part Number
2.00mm Pitch, Micro-Lock Plus Single Row Receptacle Housings	<u>505570</u>

Use with Part(s)

Description	Part Number
2.00mm Pitch Micro-Lock Plus Male Crimp Terminals	<u>213720</u>

This document was generated on Apr 29, 2026