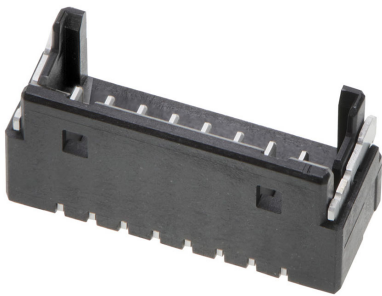




**Part Number :** [2140940080](#)  
**Product Description :** OneBlade Header,  
1.00mm Pitch, Single Row, Vertical, Surface  
Mount, Tin (Sn) Plating, Friction Lock, 8  
Circuits, Tape and Reel  
**Series Number :** 214094  
**Status :** Active  
**Product Category :** PCB Headers and  
Receptacles



## Documents & Resources


**Drawings**  
[2140940080\\_sd.pdf](#)

**3D Models and Design Files**  
[2140940080.dxf](#)  
[2140940080.pdf](#)  
[2140940080\\_stp.zip](#)

**Specifications**  
[2140949200-SPK-200.pdf](#)  
[2140920000-PS-000.pdf](#)

## Product Environment Compliance

### Compliance

GADSL/IMDS	Compliant with Exemption 44
China RoHS	
EU ELV	Not Relevant
Low-Halogen Status	Not Low-Halogen per IEC 61249-2-21
REACH SVHC	Not Contained per D(2024)6225-DC (07 Nov 2024)
EU RoHS	Compliant per EU 2015/863

### Multiple Part Product Compliance Statements

- Eu RoHS
- REACH SVHC
- Low-Halogen

## Multiple Part Industry Compliance Documents

- IPC 1752A Class C
- IPC 1752A Class D
- Molex Product Compliance Declaration
- IEC-62474
- chemSHERPA (xml)

## EU RoHS Certificate of Compliance

---

### Part Details

#### General

Status	Active
Category	PCB Headers and Receptacles
Series	214094
Description	OneBlade Header, 1.00mm Pitch, Single Row, Vertical, Surface Mount, Tin (Sn) Plating, Friction Lock, 8 Circuits, Tape and Reel
Application	Signal, Wire-to-Board
Component Type	PCB Header
Product Name	OneBlade
UPC	195842620803

#### Agency

UL	E29179
----	--------

#### Electrical

Current - Maximum per Contact	2.5A
Voltage - Maximum	100V AC (RMS)/DC

#### Physical

Breakaway	No
Circuits (Loaded)	8
Circuits (maximum)	8
Color - Resin	Black
Durability (mating cycles max)	30
First Mate / Last Break	No
Glow-Wire Capable	No

Guide to Mating Part	No
Keying to Mating Part	None
Lock to Mating Part	Yes
Mated Height	6.50mm
Material - Metal	Brass
Material - Plating Mating	Matte Tin
Material - Plating Termination	Matte Tin
Material - Resin	Polyamide
Net Weight	261.730/mg
Number of Rows	1
Orientation	Vertical
Packaging Type	Embossed Tape on Reel
PCB Locator	No
PCB Retention	Yes
Pitch - Mating Interface	1.00mm
Pitch - Termination Interface	1.00mm
Plating min - Mating	1.000µm
Plating min - Termination	1.000µm
Polarized to Mating Part	Yes
Polarized to PCB	Yes
Robotic Placement	Vacuum Pick-Up Area
Temperature Range - Operating	-40° to +105°C
Termination Interface Style	Surface Mount

---

## Mates With / Use With

### Mates with Part(s)

Description	Part Number
OneBlade Single Row Receptacle Housings	<u>214092</u>

---

This document was generated on Feb 08, 2025