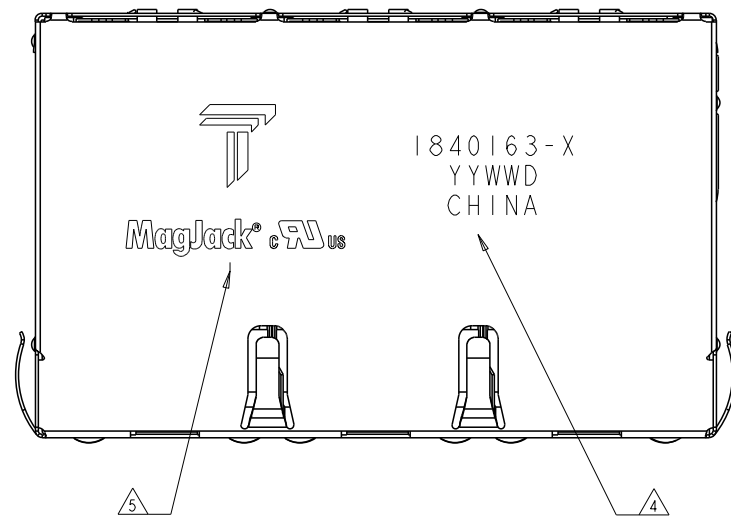
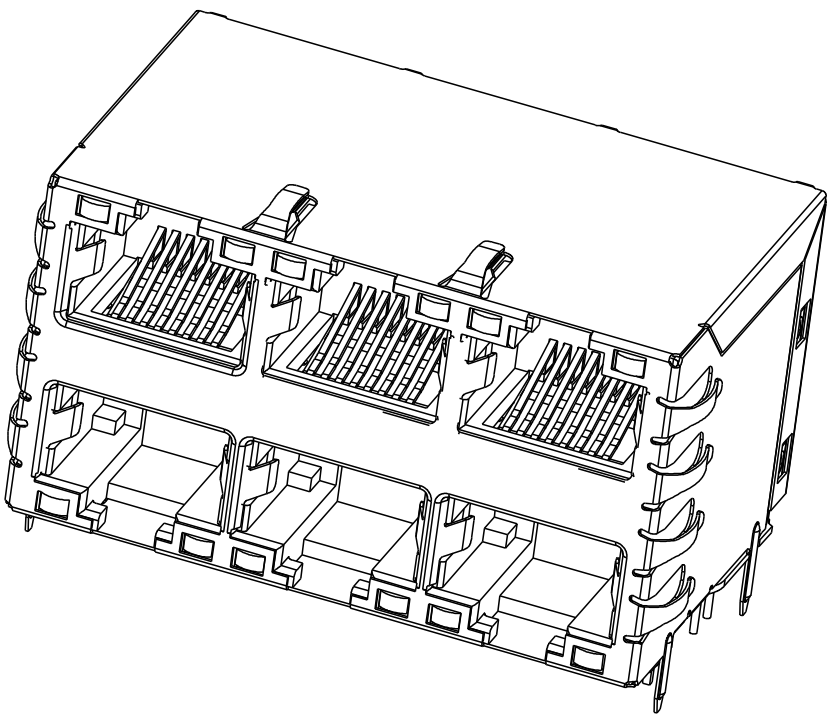


THIS DRAWING AND THE SUBJECT MATTER SHOWN THEREON ARE CONFIDENTIAL AND THE PROPERTY OF BEL/STEWART/TRP CONNECTOR AND SHALL NOT BE REPRODUCED, COPIED, OR USED IN ANY MANNER WITHOUT THE WRITTEN CONSENT OF TRP CONNECTOR.

PRODUCT MAY BE PROTECTED BY ONE OR MORE OF THE FOLLOWING US PATENTS:
5736910 5939955 6425781 6428361 6554638 6840817 7123117
7429195 7717749 7808751 6217391 6149050 7924130

REVISIONS				
#	LYR	DESCRIPTION	DATE	OWN APVD
D		EC-1411035 COMPANY LOGO CHANGE	11FEB2015	TR TY



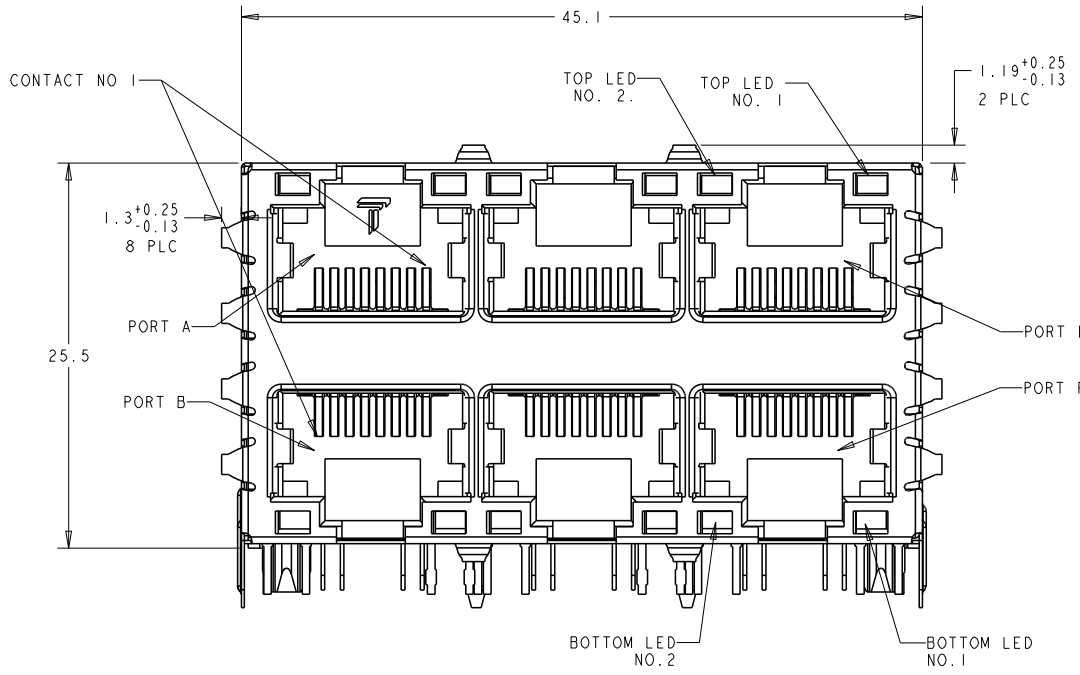
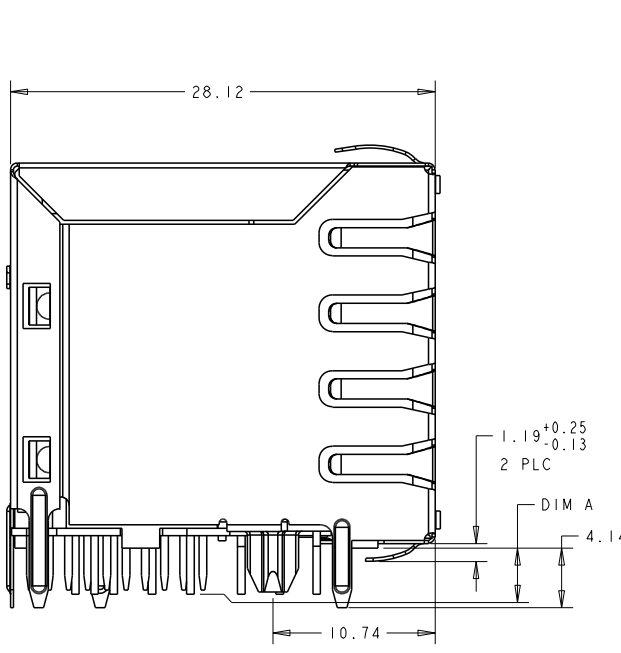
1. MATERIALS: PLASTIC HOUSING: BLACK, THERMOPLASTIC
FLAMMABILITY RATING UL 94V-0
SHIELD: BRASS, PREPLATED WITH 0.76um MIN SEMI-BRIGHT NICKEL,
POST DIPPED WITH 2.54um MIN SAC SOLDER ON SOLDER TAILS,
CONTACTS: PHOSPHOR BRONZE, 1.27um MIN OVERALL NICKEL
UNDERPLATE WITH SELECT 1.27um MIN GOLD AT MATING INTERFACE
AND 2.54um MIN MATTE TIN ON SOLDER TAILS.
LED: DIFFUSED EPOXY LENS, CARBON STEEL LEAD FRAME
LEADS PREPLATED WITH 2.03um MIN SILVER OVER 1.02um MIN NICKEL
UNDERPLATE OVER 1.02um MIN COPPER UNDERPLATE. POST-PLATED WITH
2.54um MIN MATTE TIN AND/OR SAC SOLDER DIP OR PURE TIN SOLDER DIP
INTERNAL MAGNETICS PC BOARDS: HIGH TEM. PCB, TG>170°C
2. MAGNETICS
-APPLICATION: 10/100/1000 BASE-T
-IMPEDANCE: 100 OHMS
-TURNS RATIO (CHIP:CABLE): 1:1 ALL FOUR PAIRS
-OPEN CIRCUIT INDUCTANCE (OCL): 350uH MIN @100kHz, 0.1VRMS,
8mADC BIAS FROM 0°C TO 70°C, ALL FOUR PAIRS
-ALL FOUR PAIRS BJ-DIRECTIONAL
-PERFORMANCE @ 25°C:
INSERTION LOSS (IL): 1.1dB MAX FROM 0.5MHz TO 100MHz
RETURN LOSS (RL): 18dB MIN FROM 0.5MHz TO 40MHz
12-20LOG(f/80)dB MIN FROM 40.1MHz TO 100MHz
CROSSTALK ATTENUATION: 35dB MIN FROM 0.5MHz TO 40MHz
33-20LOG(f/50)dB MIN FROM 40.1MHz TO 100MHz
COMMON MODE REJECTION RATIO (CMRR): 30dB MIN FROM 0.5MHz TO 100MHz
-ISOLATION VOLTAGE: 2250VDC (MAX) FOR 60 SECS WITH RISE TIME OF 500V/SEC
AND WITH ALL PORTS CONNECTED
3. THE MAGNETICS ARE SYMMETRICAL AND SUPPORT AUTO-MDI/MDIX.
4. PART NUMBER, DATE CODE AND COUNTRY OF ORIGIN LOCATED IN THE APPROXIMATE AREA SHOWN. DATE CODE: YYWW, "YY" IS YEAR, "WW" IS WEEK, "D" IS DAY OF WEEK, WITH SUNDAY=1
5. AGENCY APPROVAL LOGO AND TRP LOGO TO BE LOCATED IN THE APPROXIMATE AREA SHOWN.
6. LEDS ARE DRIVEN WITH CONSTANT CURRENT AT APPROX 20mA
LED COLOR:

DOMINANT WAVELENGTH (λD): GREEN 568 nm TYP. @IF=20mA
FORWARD VOLTAGE (VF): GREEN 2.2V TYP. @ IF=20mA

DOMINANT WAVELENGTH (λD): YELLOW 588 nm TYP. @IF=20mA
FORWARD VOLTAGE (VF): YELLOW 2.1V TYP. @ IF=20mA

DOMINANT WAVELENGTH (λD): ORANGE 605 nm TYP. @IF=20mA
FORWARD VOLTAGE (VF): ORANGE 2.1V TYP. @ IF=20mA

7. DATUM AND BASIC DIMENSION ESTABLISHED BY CUSTOMER.
8. BASIC DIMENSION ESTABLISHED BY CUSTOMER, BUT NOT TO BE GREATER THAN 5.08.
9. RJ45 CAVITY CONFORMS TO FCC RULES AND REGULATION PART 68 SUBPART F
10. OPERATING TEMPERATURE: 0°C TO +70°C.
11. THESE PARTS ARE RECOMMENDED FOR WAVE SOLDERING PROCESS,
PREHEAT TEMPERATURE IS 120°C TO 160°C, 120 SECONDS TO 180 SECONDS,
PEAK SOLDERING TEMPERATURE IS 260°C MAX, 10 SECONDS MAX
12. WELDING ALL SIGNAL PINS WITH BOTTOM PCB



3.04	GRN/ORA	GRN/ORA	GRN/ORA	GRN/ORA	1840163-7
3.04	GREEN	GRN/ORA	GREEN	GRN/ORA	1840163-6
3.04	GRN/YEL	GREEN	GRN/YEL	GREEN	1840163-5
3.04	GRN/YEL	GRN/YEL	GRN/YEL	GRN/YEL	1840163-4
3.04	GREEN	YELLOW	GREEN	YELLOW	1840163-3
3.04	YELLOW	GREEN	GREEN	YELLOW	1840163-2
3.04	GREEN	GREEN	GREEN	GREEN	1840163-1
DIM A	BOTTOM LED NO. 2	BOTTOM LED NO. 1	TOP LED NO. 2	TOP LED NO. 1	PART NO.

THIS DRAWING IS A CONTROLLED DOCUMENT.

DIMENSIONS: mm

TOLERANCES UNLESS OTHERWISE SPECIFIED:
0 PLC ±0.25
1 PLC ±0.25
2 PLC ±0.25
3 PLC ±0.25
4 PLC ±0.25
ANGLES
APPLICATION SPEC

PRODUCT SPEC 108-104004

APPROVALS
OWN TOMMY REN 28MAY2007
CHK KEITH ZHU 28MAY2007
APVD TEDDY XIONG 28MAY2007

MODEL NAME MAGJACK STACK NON-PoE

DESC 2X3 S8G56 GIGABIT W/ LED

SIZE A1

CAGE CODE C=1840163

RESTRICTED TO

CUSTOMER DRAWING

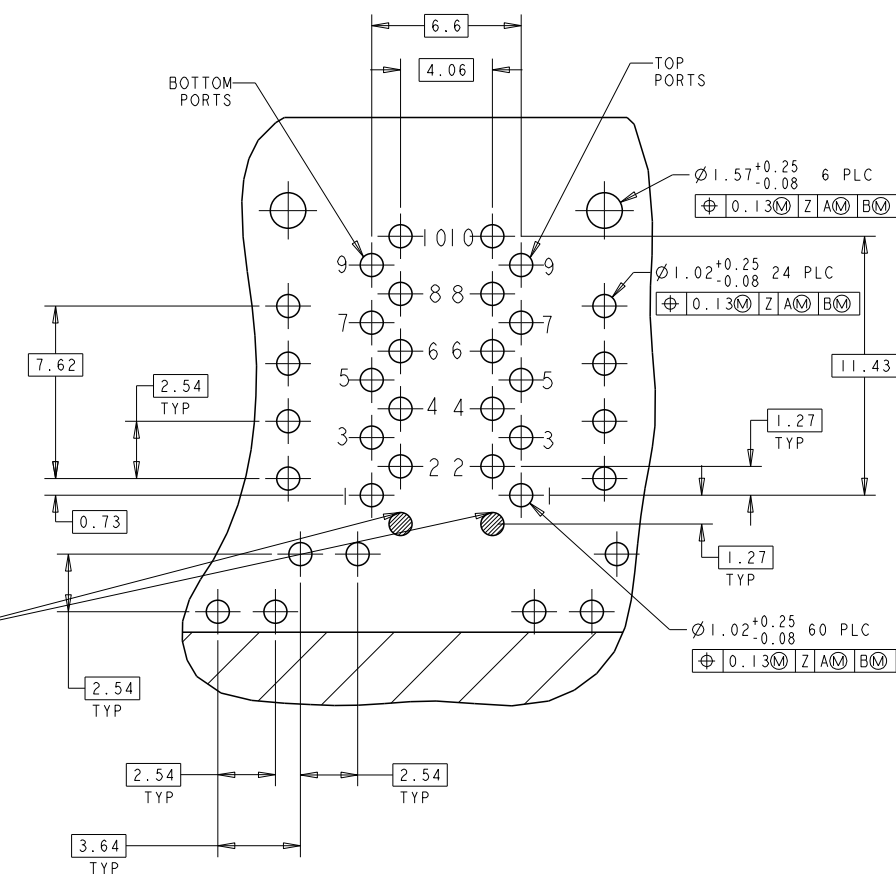
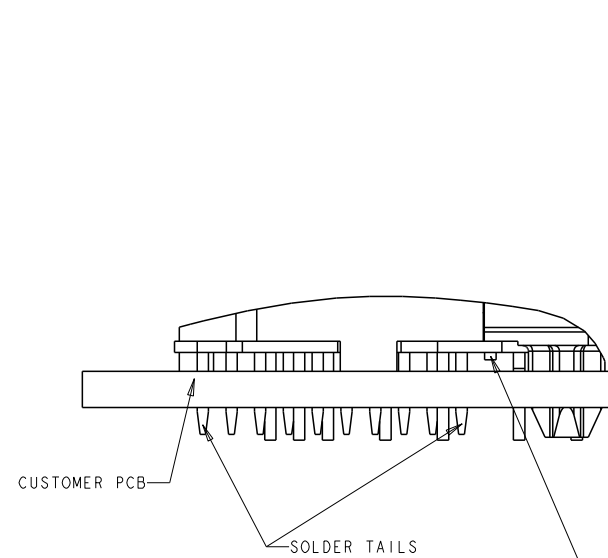
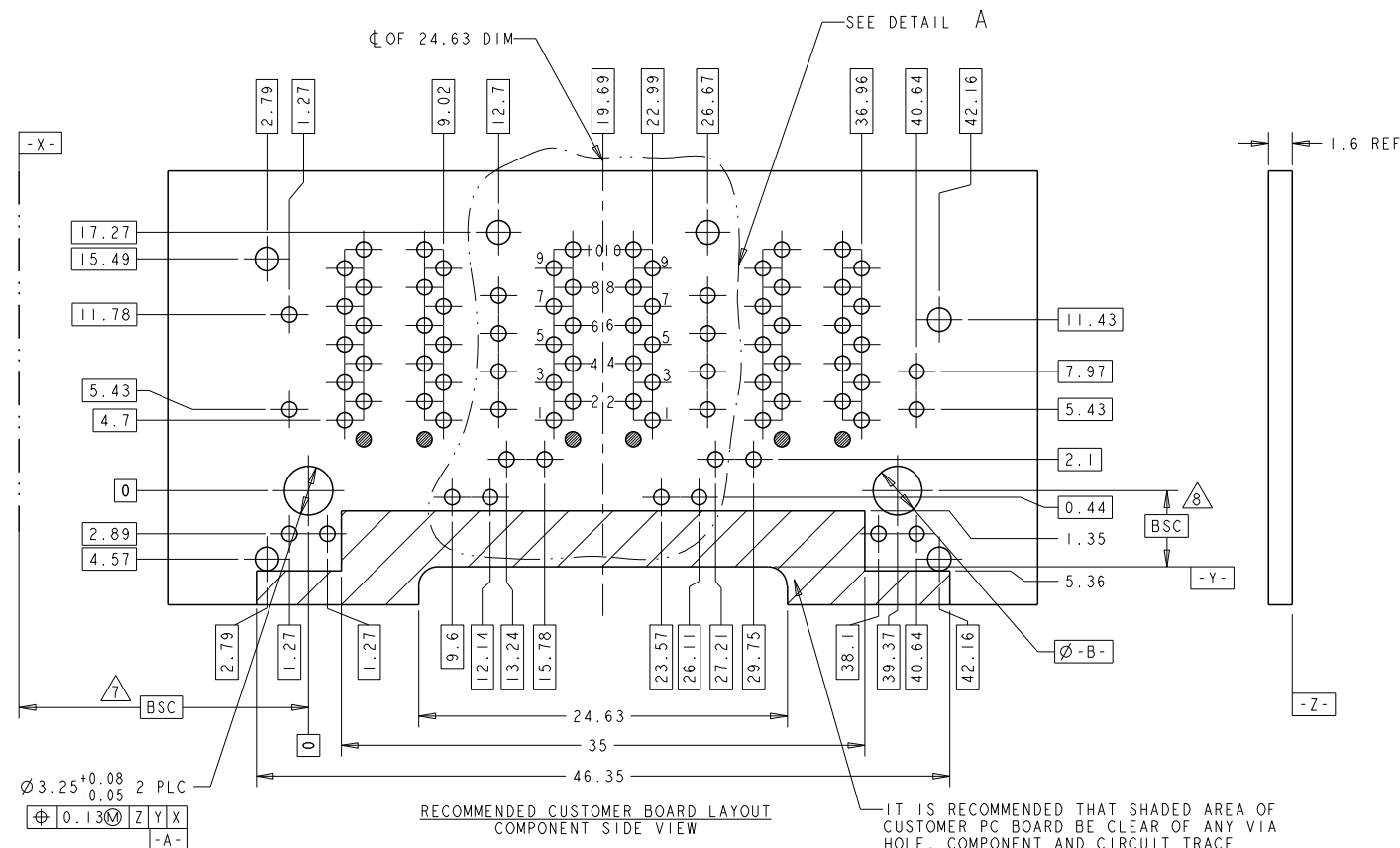
SCALE 2:1

SHEET 1 OF 3

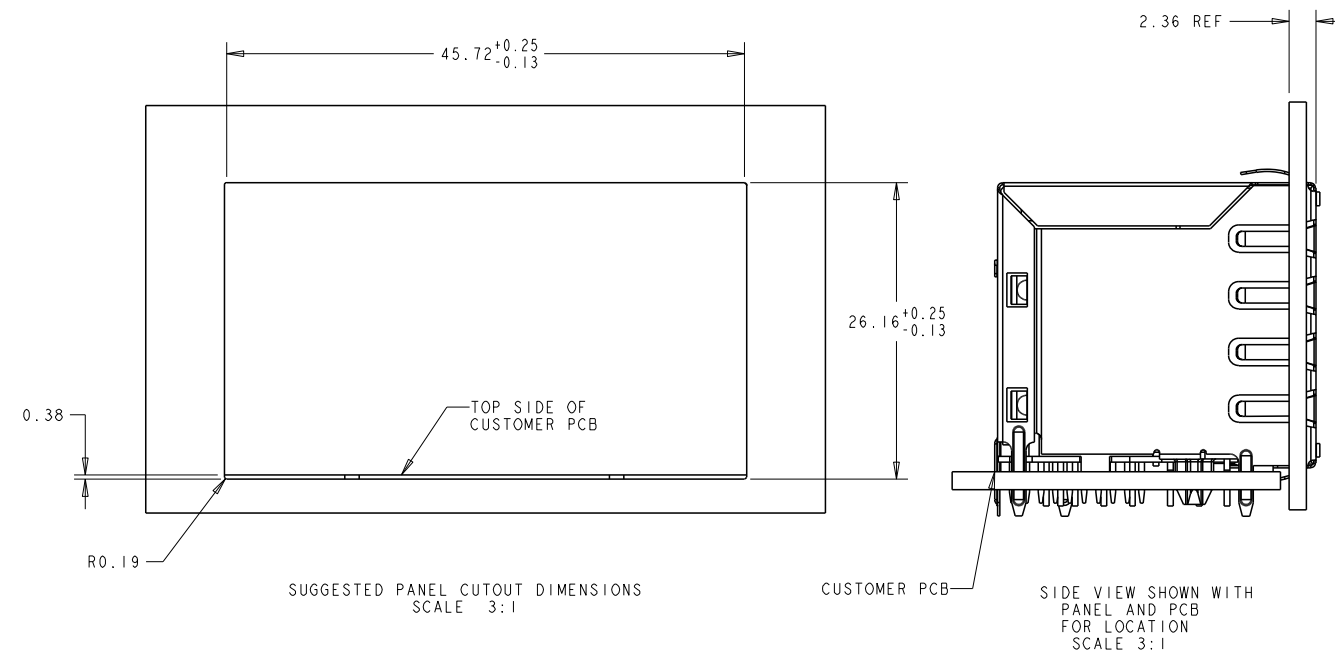
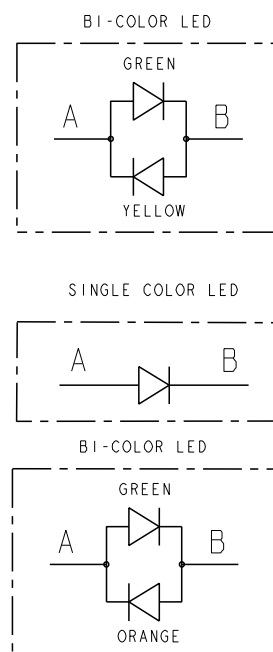
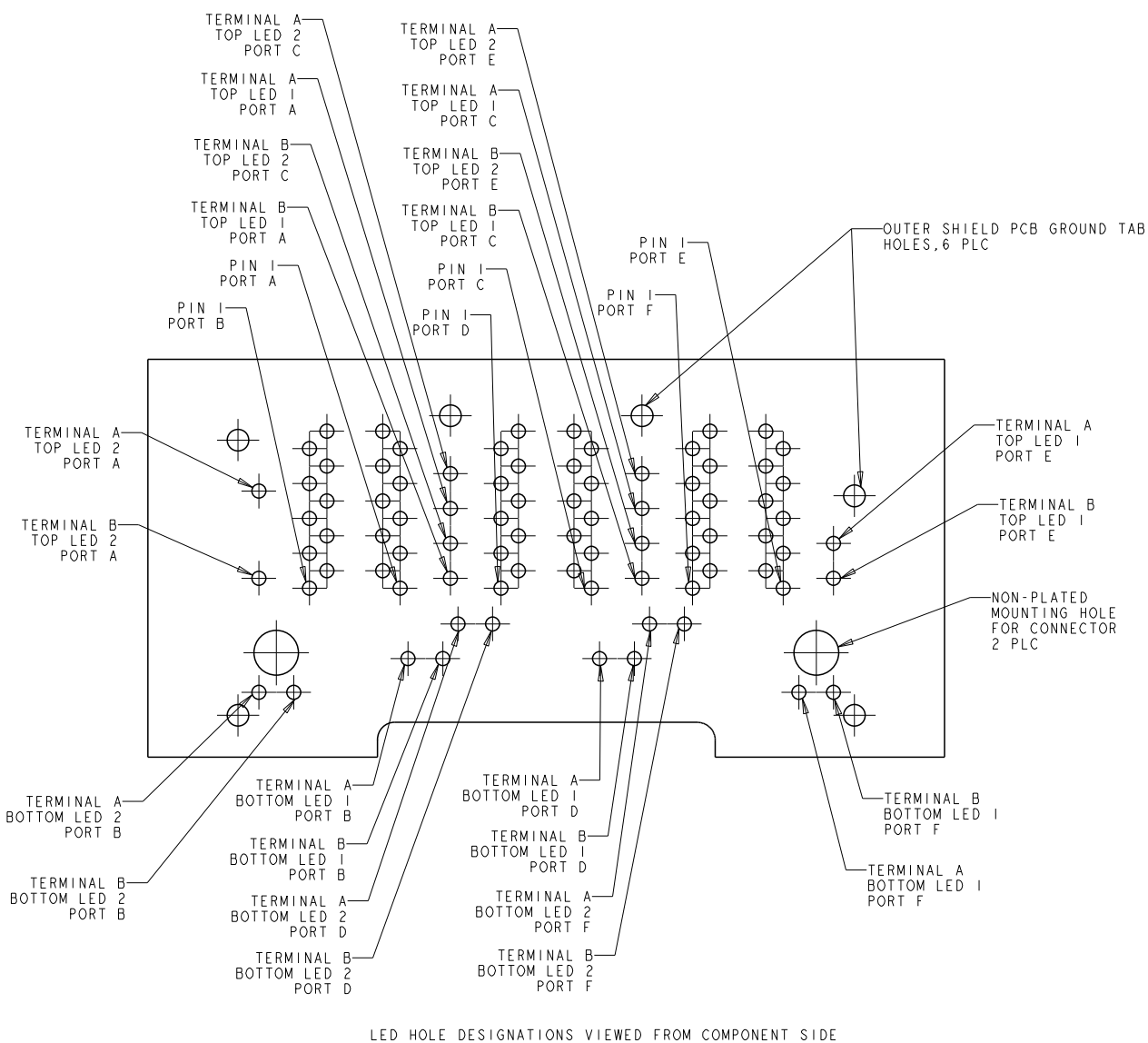
REV D



trp CONNECTOR a bel group

DONGGUAN CHINA



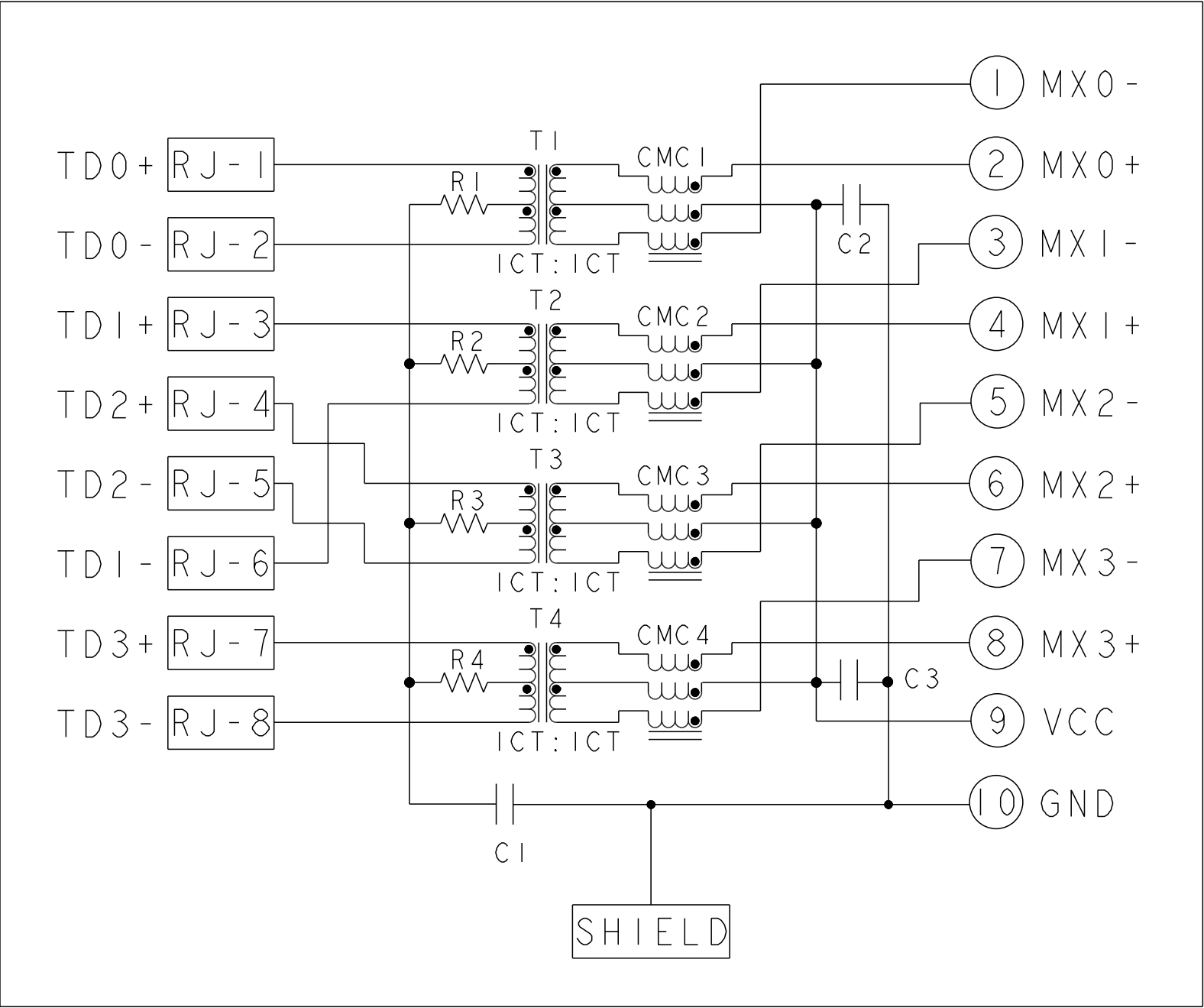
PIN DESIGNATION
3 PLC
DETAIL A
SCALE 6:1



THIS DRAWING IS A CONTROLLED DOCUMENT.		OWN TOMMY REN 28MAY2007	 trp CONNECTOR a bel group	DONGGUAN CHINA		
DIMENSIONS:		CHK KEITH ZHU 28MAY2007				
TOLERANCES UNLESS OTHERWISE SPECIFIED:		APPD TEDDY XIONG 28MAY2007				
mm		MODEL NAME				
	0 PLC ±0.25 1 PLC ±0.25 2 PLC ±0.25 3 PLC ±0.25 4 PLC ±0.25	MAGJACK STACK NON-PoE	DESC 2X3 S8G56 GIGABIT W/ LED			
PRODUCT SPEC 108-104004	APPLICATION SPEC -	SIZE A1	CAGE CODE	DRAWING NO C=1840163	RESTRICTED TO -	
		CUSTOMER DRAWING	SCALE 2:1	SHEET 2	OF 3	REV D

S8G56 GIGABIT CIRCUIT^{△△}

TOP AND BOTTOM PORTS

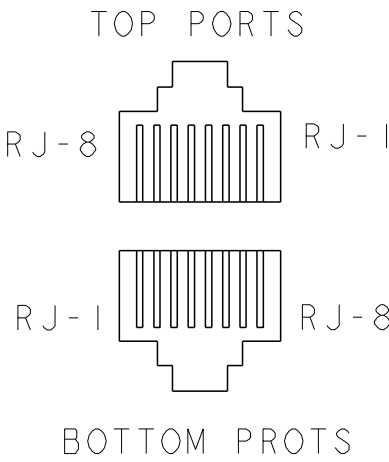


PIN DESIGNATION



(REPEAT FOR EACH VERTICAL PAIR OF PORTS)



RJ CABLE
CONTACTS



C1 = 1000pF, 2kV, X7R DECOUPLING CAP
C2 - C3 = 10nF, 50V, CAPACITORS
R1-R4 = 75 Ohms, 1/16 W, RESISTORS

THIS DRAWING IS A CONTROLLED DOCUMENT.		DWN: TOMMY REN 28MAY2007			trp a bel group	DONGGUAN CHINA
DIMENSIONS: mm		CHK: KEITH ZHU 28MAY2007				
TOLERANCES UNLESS OTHERWISE SPECIFIED:		APPD: TEDDY XIONG 28MAY2007				
		MODEL NAME				
0 PLC ±0.25 1 PLC ±0.25 2 PLC ±0.25 3 PLC ±0.25 4 PLC ±0.25 ANGLES ±°		MAGJACK STACK NON-PoE		2X3 S8G56 GIGABIT W/ LED		
PRODUCT SPEC 108-104004		APPLICATION SPEC		SIZE A1	CAGE CODE C=1840163	DRAWING NO. -
CUSTOMER DRAWING				SCALE 2:1	SHEET 3 of 3	REV D