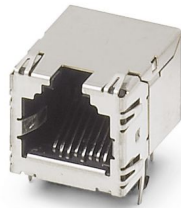


1653087

<https://www.phoenixcontact.com/us/products/1653087>

Please be informed that the data shown in this PDF document is generated from our online catalog. Please find the complete data in the user documentation. Our general terms of use for downloads are valid.



RJ45 PCB connectors, design: RJ45, degree of protection: IP20, number of positions: 8, 1 Gbps, CAT5 (IEC 11801:2002), material: Metal, connection method: THT wave, cable outlet: straight

Your advantages

- Through-hole technology (THT) provides high mechanical stability when connecting the female connector to the PCB
- The extended temperature range from -25°C to +80°C enables use in demanding applications
- Safe transmission due to shielding

Commercial data

Item number	1653087
Packing unit	5 pc
Minimum order quantity	5 pc
Sales key	AB12
Product key	ABNADC
Catalog page	Page 85 (C-2-2013)
GTIN	4017918970031
Weight per piece (including packing)	7.02 g
Weight per piece (excluding packing)	7 g
Customs tariff number	85366930
Country of origin	JP

# VS-08-BU-RJ45-6/LH-1 - RJ45 PCB connectors



1653087

<https://www.phoenixcontact.com/us/products/1653087>

## Technical data

### Product properties

Type	RJ45
Product type	Data connector (device side)
Number of positions	8
Type of packaging	PE bag
Housing shield springs	Yes
Connection profile	RJ45
Number of slots	1
Type	Socket
Shielded	yes
Cable outlet	straight

### Insulation characteristics

Overvoltage category	I
Degree of pollution	2

### Electrical properties

Rated voltage (III/2)	72 V DC
Rated voltage (III/3)	72 V (DC)
Rated surge voltage	1.5 kV DC
Rated surge voltage (III/3)	1.5 kV
Rated surge voltage	1 kV DC
Rated current	1 A
Insulation resistance	> 500 MΩ
Test voltage	1 kV DC
Test voltage Core/Core	1 kV DC
Test voltage Core/Shield	1.50 kV DC
Contact resistance per contact pair	max. 230 mΩ
Transmission medium	Copper
Transmission speed	1 Gbps

### Connection data

#### Connection technology

Connection method	THT wave
-------------------	----------

### Dimensions

Width	17.6 mm
Height	18.1 mm
Length	21 mm
Installed height	13.80 mm
Orientation to	90.00 °

# VS-08-BU-RJ45-6/LH-1 - RJ45 PCB connectors



1653087

<https://www.phoenixcontact.com/us/products/1653087>

Data pin length	3.60 mm
-----------------	---------

## Material specifications

Material	Au (1,27 µm/50 µ")
	Ni
	Au
	Ni
	Copper alloy
Flammability rating according to UL 94	V0
Contact material	Phosphor bronze
Contact surface material	Gold
Contact carrier material	PBT
Housing material	Metal

## Cable/line

Test voltage Core/Core	1 kV DC
Test voltage Core/Shield	1.50 kV DC
Halogen-free	no

## Mechanical properties

### Mechanical data

Insertion/withdrawal cycles	> 750
Insertion force per signal contact	< 20.00 N
Extraction force per signal contact	< 20 N

## Environmental and real-life conditions

### Ambient conditions

Degree of protection	IP20
Ambient temperature (operation)	-25 °C ... 80 °C
Ambient temperature (storage/transport)	-25 °C ... 80 °C

## Mounting

Mounting type	PCB mounting
---------------	--------------

### Processing notes

Classification temperature T <sub>c</sub>	260 °C
---	--------

# VS-08-BU-RJ45-6/LH-1 - RJ45 PCB connectors

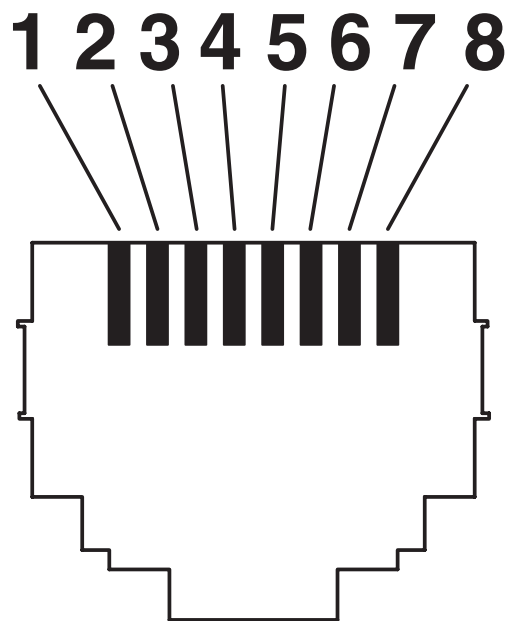
1653087

<https://www.phoenixcontact.com/us/products/1653087>



## Drawings

### Schematic diagram



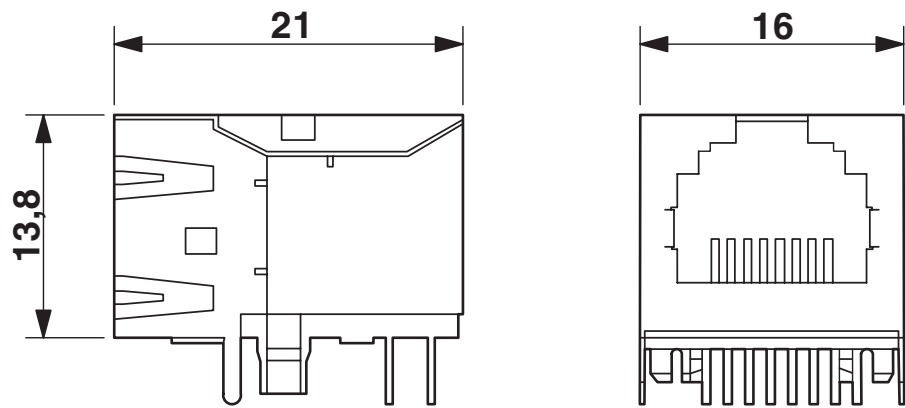
VS-08-BU-RJ45-6/LH-1 - RJ45 PCB connectors



1653087

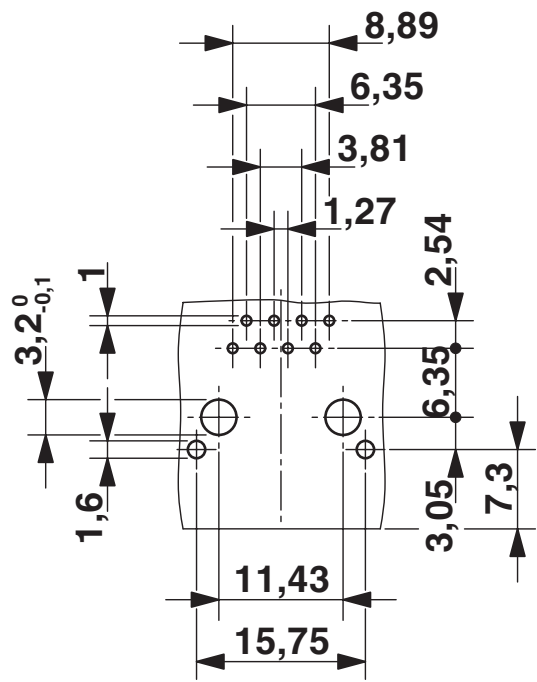
<https://www.phoenixcontact.com/us/products/1653087>

Dimensional drawing



RJ45 socket insert

Drilling plan/solder pad geometry



Drilling diagram

# VS-08-BU-RJ45-6/LH-1 - RJ45 PCB connectors



1653087

<https://www.phoenixcontact.com/us/products/1653087>

## Classifications

### ECLASS

ECLASS-11.0	27440223
ECLASS-12.0	27440223
ECLASS-13.0	27440223

### ETIM

ETIM 9.0	EC003557
----------	----------

### UNSPSC

UNSPSC 21.0	39121400
-------------	----------

# VS-08-BU-RJ45-6/LH-1 - RJ45 PCB connectors



1653087

<https://www.phoenixcontact.com/us/products/1653087>

## Environmental product compliance

China RoHS	Environmentally friendly use period: unlimited = EFUP-e
	No hazardous substances above threshold values

# VS-08-BU-RJ45-6/LH-1 - RJ45 PCB connectors



1653087

<https://www.phoenixcontact.com/us/products/1653087>

## Accessories

### VS-08-A-RJ45/LP-1-IP 20 - Panel mounting frames

1688641

<https://www.phoenixcontact.com/us/products/1688641>



RJ45 panel mounting frame, 1x, IP20, for PCB assembly, for socket inserts, without mounting screws

---

### VS-08-A-RJ45/LP-1-IP67 - Panel mounting frames

1689446

<https://www.phoenixcontact.com/us/products/1689446>



RJ45 panel mounting frame, IP67, for PCB connection, for square panel cutout, with grommet, without mounting screws, color: gray



## VS-08-BU-RJ45-6/LH-1 - RJ45 PCB connectors

1653087

<https://www.phoenixcontact.com/us/products/1653087>



## VS-08-A-RJ45/LP-1-IP67-BK - Panel mounting frames

1658655

<https://www.phoenixcontact.com/us/products/1658655>



RJ45 panel mounting frame, IP67, for PCB connection, for square panel cutout, with grommet, without mounting screws, color: black

---

## VS-PPC-F1-RJ45-MNNA-1R-PHA - Panel mounting frames

1608029

<https://www.phoenixcontact.com/us/products/1608029>



RJ45 panel mounting frame, IP67, for push-pull interlocking, metal, for PCB connection, for square panel cutout, with grommet, without mounting screws

# VS-08-BU-RJ45-6/LH-1 - RJ45 PCB connectors



1653087

<https://www.phoenixcontact.com/us/products/1653087>

## VS-PPC-F1-RJ45-P0BK-1R-PHA - Panel mounting frames

1657847

<https://www.phoenixcontact.com/us/products/1657847>



RJ45 panel mounting frame, IP67, for push-pull interlocking, plastic, for PCB connection, for square panel cutout, with grommet, without mounting screws

---

Phoenix Contact 2024 © - all rights reserved

<https://www.phoenixcontact.com>

Phoenix Contact USA  
586 Fulling Mill Road  
Middletown, PA 17057, United States  
(+717) 944-1300  
[info@phoenixcon.com](mailto:info@phoenixcon.com)